

WKE.94 Prefab Building

2995 W. HICKMAN RD
WAUKEE, IA 50263



Civil Design Advantage

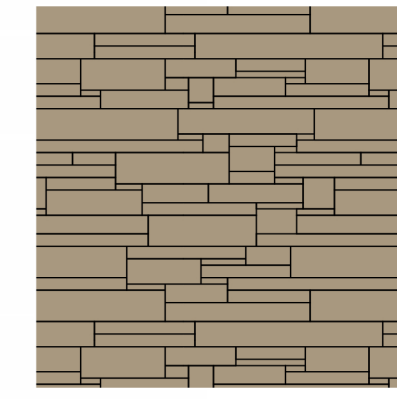
4121 NW Urbandale Drive
Urbandale, IA 50322
515-369-4400

NORTH ELEVATION - SURFACE AREA: 5,862 SF 100%
NORTH ELEVATION - METAL PANEL: 5,142 SF 87%
NORTH ELEVATION - TAN STONE: 720 SF 13%

EAST ELEVATION - SURFACE AREA: 2,089 SF 100%
EAST ELEVATION - METAL PANEL: 1526 SF 73%
EAST ELEVATION - TAN STONE: 84 SF 4%
EAST ELEVATION - DOORS: 330 SF 16%
EAST ELEVATION - CONCRETE: 149 SF 7%

SOUTH ELEVATION - SURFACE AREA: 5,452 SF 100%
SOUTH ELEVATION - METAL PANEL: 4,690 SF 86%
SOUTH ELEVATION - TAN STONE: 690 SF 13%
SOUTH ELEVATION - DOORS: 72 SF 1%

WEST ELEVATION - SURFACE AREA: 1,927 SF 100%
WEST ELEVATION - METAL PANEL: 1,681 SF 87%
WEST ELEVATION - TAN STONE: 246 SF 13%



VERSETTA STONE - PLUM CREEK



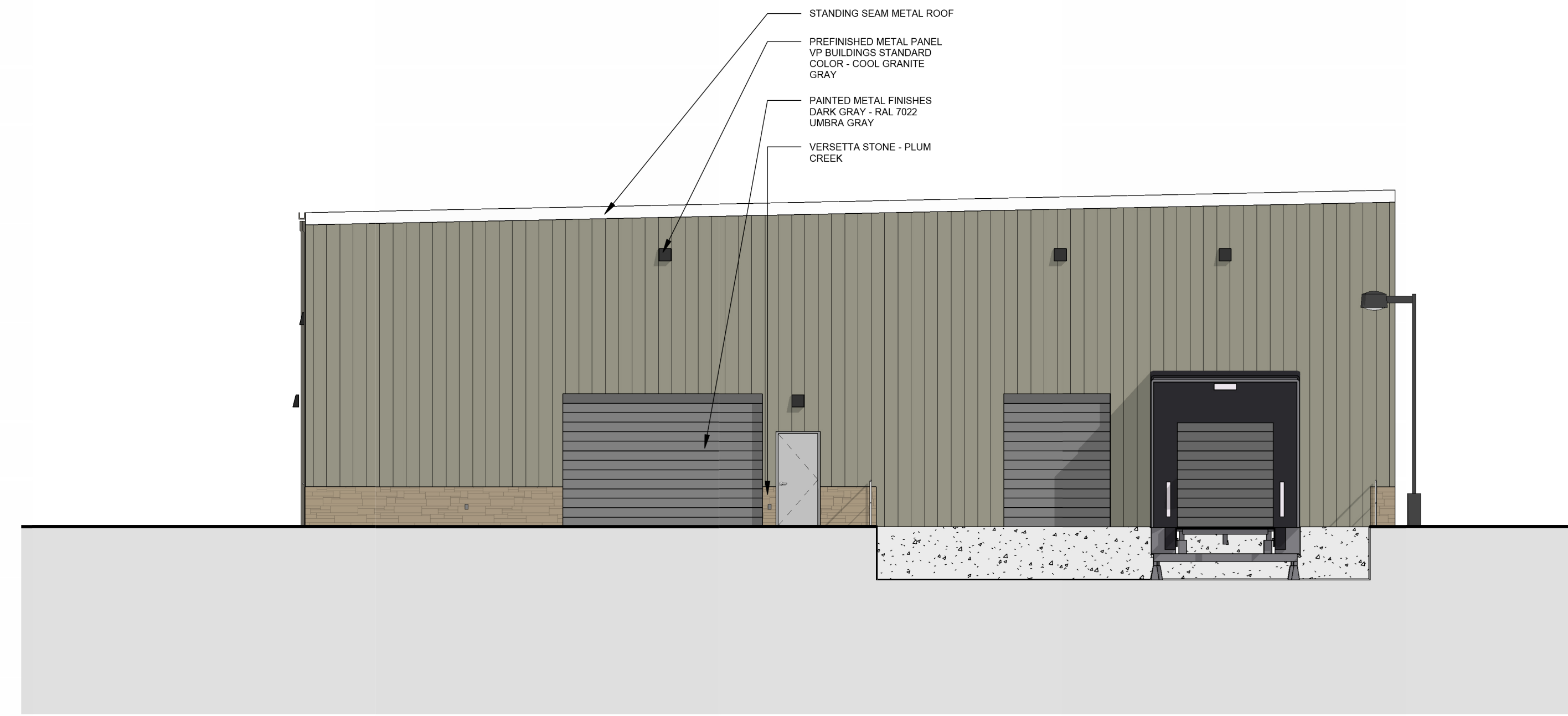
PREFINISHED METAL PANEL
VP BUILDINGS STANDARD COLOR -
COOL ZINC GRAY



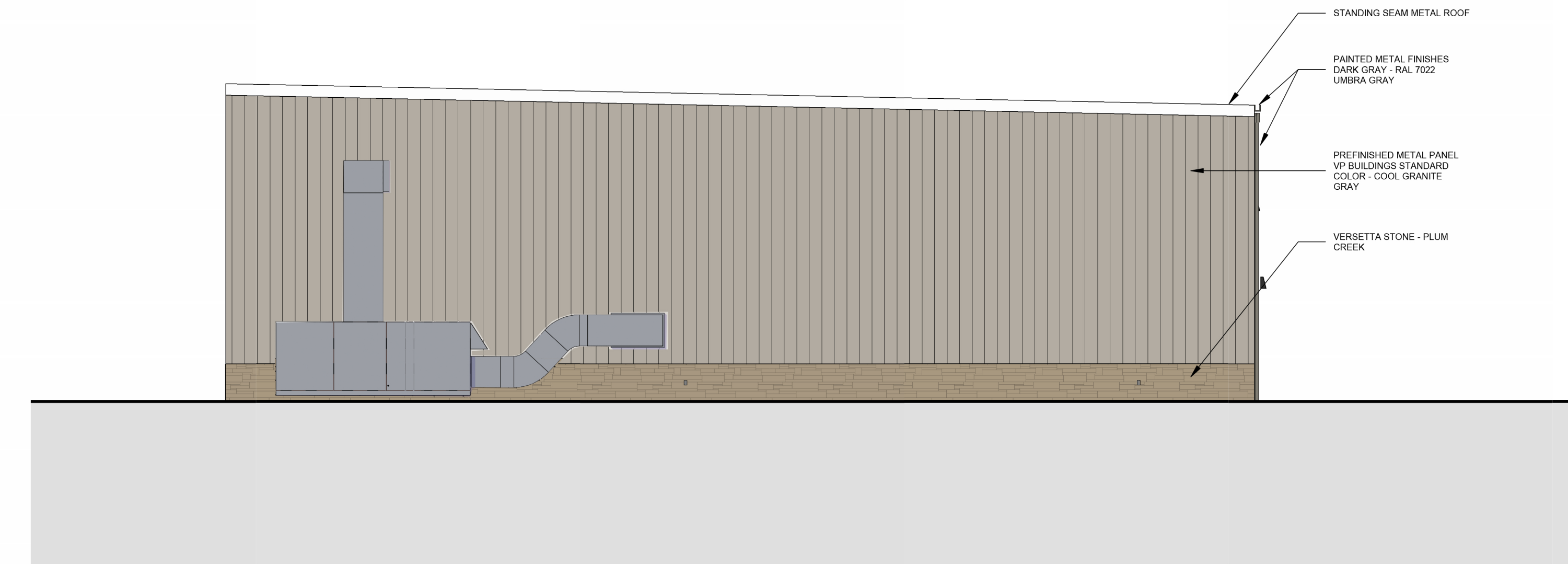
PREFINISHED METAL PANEL
VP BUILDINGS STANDARD COLOR -
COOL GRANITE GRAY



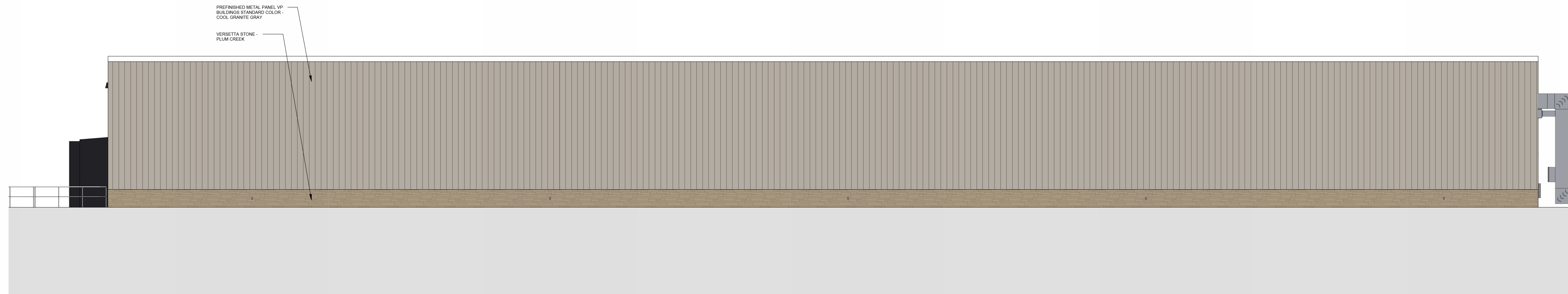
PAINTED METAL FINISHES
DARK GRAY - RAL 7022
UMBRA GRAY



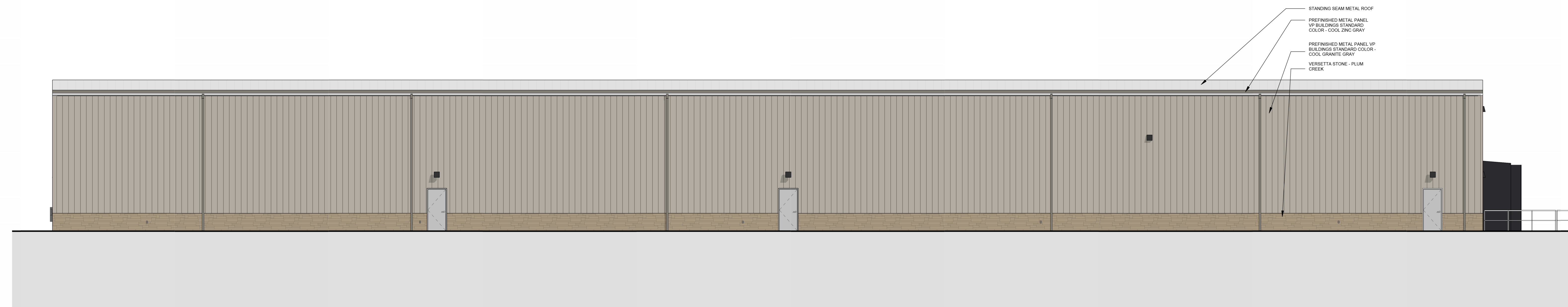
4 ELEVATION - EAST
1/8" = 1'-0"



3 ELEVATION - WEST
1/8" = 1'-0"



2 ELEVATION - NORTH
1/8" = 1'-0"



1 ELEVATION - SOUTH
1/8" = 1'-0"

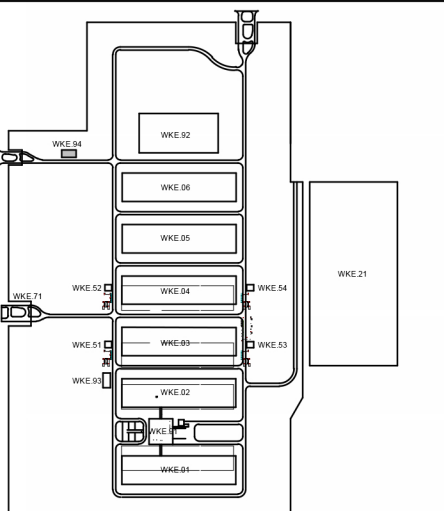
ISSUES

1 2025-06-12 100% CONSTRUCTION DOCUMENTS

REVISIONS

2 Date 2 BULLETIN 01

Date of issue:
2025-06-12



EXTERIOR FINISH ELEVATIONS

SCALE 1/8" = 1'-0"
JOB 10430287
DATE 2025-06-12
SHEET

A-2121