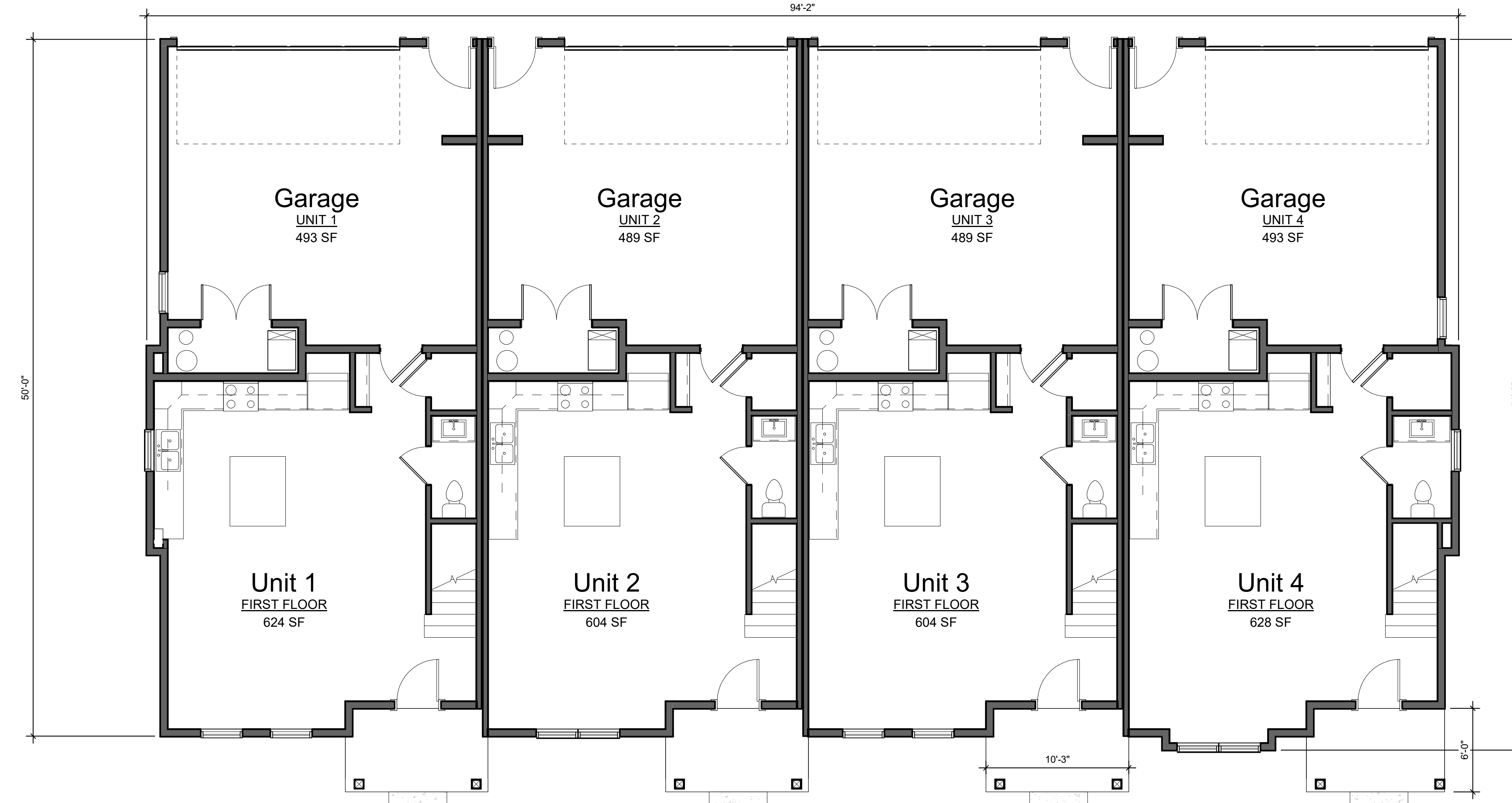




**2** 2ND FLOOR PLAN  
SCALE: 3/16" = 1'-0"



**1** 1ST FLOOR PLAN  
SCALE: 3/16" = 1'-0"



FENESTRATION %  
 TOTAL FENESTRATION SF = 48.0 SF  
 TOTAL FACADE SF = 958.8 SF  
 % FENESTRATION = 5.01 %

**4 RIGHT ELEVATION**  
 SCALE: 3/16" = 1'-0"



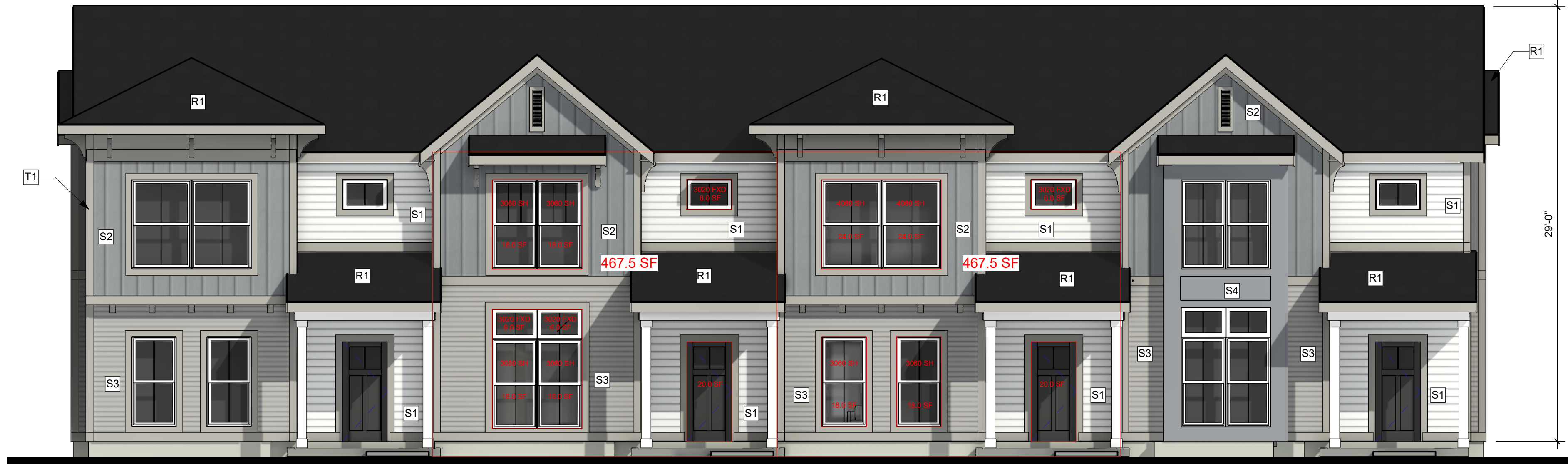
FENESTRATION % PER UNIT  
 TOTAL FENESTRATION SF = 192.7 SF  
 TOTAL FACADE SF = 455.5 SF  
 % FENESTRATION = 42.31 %

**3 REAR ELEVATION**  
 SCALE: 3/16" = 1'-0"



FENESTRATION %  
 TOTAL FENESTRATION SF = 24.0 SF  
 TOTAL FACADE SF = 978.8 SF  
 % FENESTRATION = 2.45 %

**2 LEFT ELEVATION**  
 SCALE: 3/16" = 1'-0"



FENESTRATION % FRONTAGE A:  
 TOTAL FENESTRATION SF = 110.0 SF  
 TOTAL FACADE SF = 467.5 SF  
 % FENESTRATION = 23.53 %

FENESTRATION % FRONTAGE B:  
 TOTAL FENESTRATION SF = 110.0 SF  
 TOTAL FACADE SF = 467.5 SF  
 % FENESTRATION = 23.53 %

**1 FRONT ELEVATION**  
 SCALE: 3/16" = 1'-0"

| MATERIAL SCHEDULE |   |         |      |
|-------------------|---|---------|------|
| FRONT (STREET)    |   |         |      |
| S1                | FIBER CEMENT 7" REVEAL LAP - SNOWBOUND SW 7004          | 572 SF  | 36%  |
| S2                | FIBER CEMENT BOARD AND BATTEN SIDING - WEB GRAY SW 7075 | 362 SF  | 23%  |
| S3                | FIBER CEMENT 4" REVEAL LAP - COLONNADE GRAY SW 7641     | 579 SF  | 36%  |
| S4                | JAMES HARDIE SMOOTH PANEL - WEB GRAY SW 7075            | 78 SF   | 5%   |
|                   |   | 1592 SF | 100% |
| LEFT              |   |         |      |
| S1                | FIBER CEMENT 7" REVEAL LAP - SNOWBOUND SW 7004          | 593 SF  | 55%  |
| S2                | FIBER CEMENT BOARD AND BATTEN SIDING - WEB GRAY SW 7075 | 208 SF  | 19%  |
| S3                | FIBER CEMENT 4" REVEAL LAP - COLONNADE GRAY SW 7641     | 270 SF  | 25%  |
| S5                | JAMES HARDIE SMOOTH PANEL - SNOWBOUND SW 7004           | 10 SF   | 1%   |
|                   |   | 1080 SF | 100% |

| MATERIAL SCHEDULE |   |         |      |
|-------------------|---|---------|------|
| REAR (GARAGE)     |   |         |      |
| S1                | FIBER CEMENT 7" REVEAL LAP - SNOWBOUND SW 7004          | 481 SF  | 53%  |
| S2                | FIBER CEMENT BOARD AND BATTEN SIDING - WEB GRAY SW 7075 | 23 SF   | 2%   |
| S3                | FIBER CEMENT 4" REVEAL LAP - COLONNADE GRAY SW 7641     | 403 SF  | 44%  |
|                   |   | 907 SF  | 100% |
| RIGHT             |   |         |      |
| S1                | FIBER CEMENT 7" REVEAL LAP - SNOWBOUND SW 7004          | 643 SF  | 61%  |
| S2                | FIBER CEMENT BOARD AND BATTEN SIDING - WEB GRAY SW 7075 | 184 SF  | 17%  |
| S3                | FIBER CEMENT 4" REVEAL LAP - COLONNADE GRAY SW 7641     | 208 SF  | 20%  |
| S5                | JAMES HARDIE SMOOTH PANEL - SNOWBOUND SW 7004           | 18 SF   | 2%   |
|                   |   | 1052 SF | 100% |



FENESTRATION %  
 TOTAL FENESTRATION SF = 48.0 SF  
 TOTAL FACADE SF = 958.8 SF  
 % FENESTRATION = 5.01 %

**4 RIGHT ELEVATION**  
 SCALE: 3/16" = 1'-0"



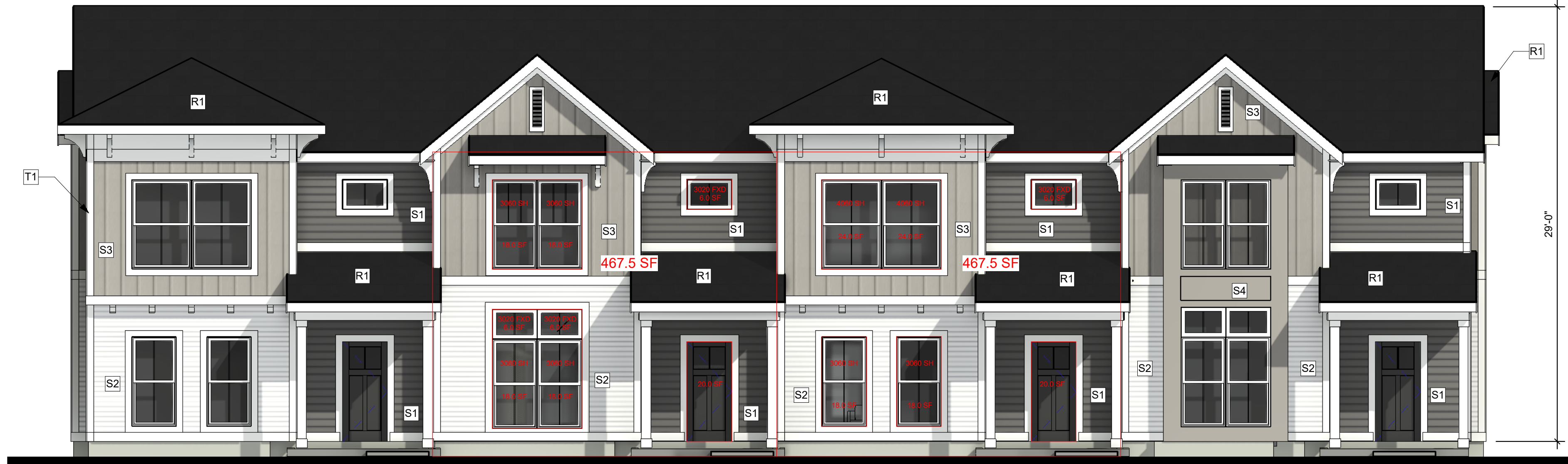
FENESTRATION % PER UNIT  
 TOTAL FENESTRATION SF = 192.7 SF  
 TOTAL FACADE SF = 455.5 SF  
 % FENESTRATION = 42.31 %

**3 REAR ELEVATION**  
 SCALE: 3/16" = 1'-0"



FENESTRATION %  
 TOTAL FENESTRATION SF = 24.0 SF  
 TOTAL FACADE SF = 978.8 SF  
 % FENESTRATION = 2.45 %

**2 LEFT ELEVATION**  
 SCALE: 3/16" = 1'-0"



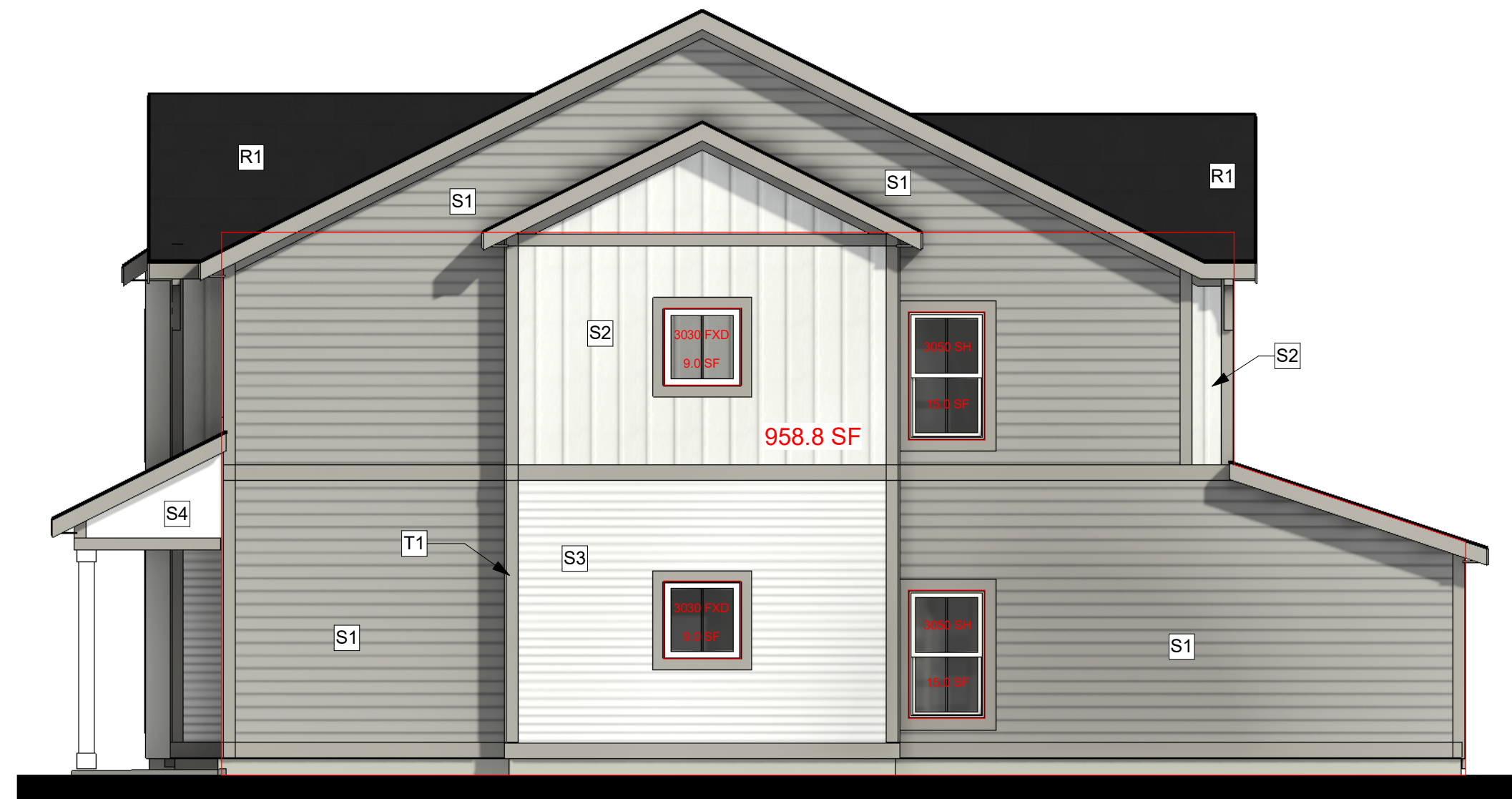
FENESTRATION % FRONTAGE A:  
 TOTAL FENESTRATION SF = 110.0 SF  
 TOTAL FACADE SF = 467.5 SF  
 % FENESTRATION = 23.53 %

FENESTRATION % FRONTAGE B:  
 TOTAL FENESTRATION SF = 110.0 SF  
 TOTAL FACADE SF = 467.5 SF  
 % FENESTRATION = 23.53 %

**1 FRONT ELEVATION**  
 SCALE: 3/16" = 1'-0"

| MATERIAL SCHEDULE |  |         |      |
|-------------------|--|---------|------|
| FRONT (STREET)    |  |         |      |
| S1                | FIBER CEMENT 7" REVEAL LAP - GAUNTLET GRAY SW 7019               | 572 SF  | 36%  |
| S2                | FIBER CEMENT 4" REVEAL LAP - SNOWBOUND SW 7004                   | 362 SF  | 23%  |
| S3                | FIBER CEMENT BOARD AND BATTEN SIDING - INTELLECTUAL GRAY SW 7045 | 579 SF  | 36%  |
| S4                | JAMES HARDIE SMOOTH PANEL - INTELLECTUAL GRAY SW 7045            | 78 SF   | 5%   |
|                   |  | 1592 SF | 100% |
| LEFT              |  |         |      |
| S1                | FIBER CEMENT 7" REVEAL LAP - GAUNTLET GRAY SW 7019               | 593 SF  | 55%  |
| S2                | FIBER CEMENT 4" REVEAL LAP - SNOWBOUND SW 7004                   | 208 SF  | 19%  |
| S3                | FIBER CEMENT BOARD AND BATTEN SIDING - INTELLECTUAL GRAY SW 7045 | 270 SF  | 25%  |
| S5                | JAMES HARDIE SMOOTH PANEL - SNOWBOUND SW 7004                    | 10 SF   | 1%   |
|                   |  | 1080 SF | 100% |

| MATERIAL SCHEDULE |  |         |      |
|-------------------|--|---------|------|
| REAR (GARAGE)     |  |         |      |
| S1                | FIBER CEMENT 7" REVEAL LAP - GAUNTLET GRAY SW 7019               | 481 SF  | 53%  |
| S2                | FIBER CEMENT 4" REVEAL LAP - SNOWBOUND SW 7004                   | 23 SF   | 2%   |
| S3                | FIBER CEMENT BOARD AND BATTEN SIDING - INTELLECTUAL GRAY SW 7045 | 403 SF  | 44%  |
|                   |  | 907 SF  | 100% |
| RIGHT             |  |         |      |
| S1                | FIBER CEMENT 7" REVEAL LAP - GAUNTLET GRAY SW 7019               | 643 SF  | 61%  |
| S2                | FIBER CEMENT 4" REVEAL LAP - SNOWBOUND SW 7004                   | 184 SF  | 17%  |
| S3                | FIBER CEMENT BOARD AND BATTEN SIDING - INTELLECTUAL GRAY SW 7045 | 208 SF  | 20%  |
| S5                | JAMES HARDIE SMOOTH PANEL - SNOWBOUND SW 7004                    | 18 SF   | 2%   |
|                   |  | 1052 SF | 100% |



FENESTRATION %  
 TOTAL FENESTRATION SF = 48.0 SF  
 TOTAL FACADE SF = 958.8 SF  
 % FENESTRATION = 5.01 %

**4 RIGHT ELEVATION**  
 SCALE: 3/16" = 1'-0"



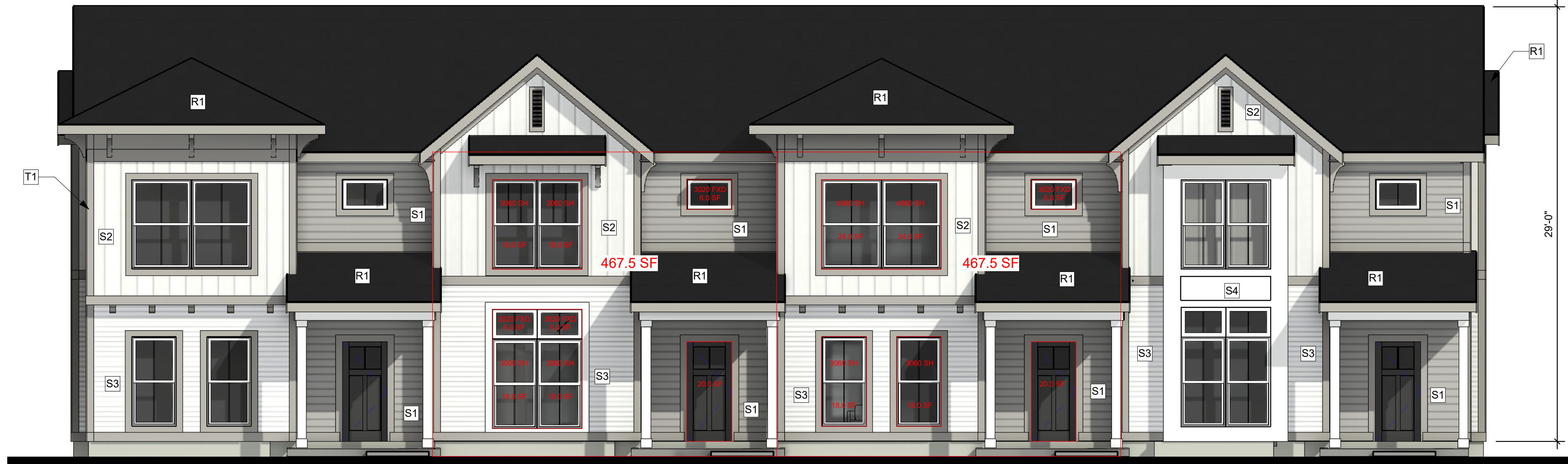
FENESTRATION % PER UNIT  
 TOTAL FENESTRATION SF = 192.7 SF  
 TOTAL FACADE SF = 455.5 SF  
 % FENESTRATION = 42.31 %

**3 REAR ELEVATION**  
 SCALE: 3/16" = 1'-0"



FENESTRATION %  
 TOTAL FENESTRATION SF = 24.0 SF  
 TOTAL FACADE SF = 978.8 SF  
 % FENESTRATION = 2.45 %

**2 LEFT ELEVATION**  
 SCALE: 3/16" = 1'-0"



FENESTRATION % FRONTAGE A:  
 TOTAL FENESTRATION SF = 110.0 SF  
 TOTAL FACADE SF = 467.5 SF  
 % FENESTRATION = 23.53 %

FENESTRATION % FRONTAGE B:  
 TOTAL FENESTRATION SF = 110.0 SF  
 TOTAL FACADE SF = 467.5 SF  
 % FENESTRATION = 23.53 %

**1 FRONT ELEVATION**  
 SCALE: 3/16" = 1'-0"

| MATERIAL SCHEDULE |  |         |      |
|-------------------|--|---------|------|
| FRONT (STREET)    |  |         |      |
| S1                | FIBER CEMENT 7" REVEAL LAP - COLONNADE GRAY SW 7641      | 572 SF  | 36%  |
| S2                | FIBER CEMENT BOARD AND BATTEN SIDING - SNOWBOUND SW 7004 | 362 SF  | 23%  |
| S3                | FIBER CEMENT 4" REVEAL LAP - SNOWBOUND SW 7004           | 579 SF  | 36%  |
| S4                | JAMES HARDIE SMOOTH PANEL - SNOWBOUND SW 7004            | 78 SF   | 5%   |
|                   |  | 1592 SF | 100% |
| LEFT              |  |         |      |
| S1                | FIBER CEMENT 7" REVEAL LAP - COLONNADE GRAY SW 7641      | 593 SF  | 55%  |
| S2                | FIBER CEMENT BOARD AND BATTEN SIDING - SNOWBOUND SW 7004 | 208 SF  | 19%  |
| S3                | FIBER CEMENT 4" REVEAL LAP - SNOWBOUND SW 7004           | 270 SF  | 25%  |
| S4                | JAMES HARDIE SMOOTH PANEL - SNOWBOUND SW 7004            | 10 SF   | 1%   |
|                   |  | 1080 SF | 100% |

| MATERIAL SCHEDULE |  |         |      |
|-------------------|--|---------|------|
| REAR (GARAGE)     |  |         |      |
| S1                | FIBER CEMENT 7" REVEAL LAP - COLONNADE GRAY SW 7641      | 481 SF  | 53%  |
| S2                | FIBER CEMENT BOARD AND BATTEN SIDING - SNOWBOUND SW 7004 | 23 SF   | 2%   |
| S3                | FIBER CEMENT 4" REVEAL LAP - SNOWBOUND SW 7004           | 403 SF  | 44%  |
|                   |  | 907 SF  | 100% |
| RIGHT             |  |         |      |
| S1                | FIBER CEMENT 7" REVEAL LAP - COLONNADE GRAY SW 7641      | 643 SF  | 61%  |
| S2                | FIBER CEMENT BOARD AND BATTEN SIDING - SNOWBOUND SW 7004 | 184 SF  | 17%  |
| S3                | FIBER CEMENT 4" REVEAL LAP - SNOWBOUND SW 7004           | 208 SF  | 20%  |
| S4                | JAMES HARDIE SMOOTH PANEL - SNOWBOUND SW 7004            | 18 SF   | 2%   |
|                   |  | 1052 SF | 100% |



FENESTRATION %  
 TOTAL FENESTRATION SF = 48.0 SF  
 TOTAL FACADE SF = 958.8 SF  
 % FENESTRATION = 5.01 %

**4 RIGHT ELEVATION**  
 SCALE: 3/16" = 1'-0"



FENESTRATION % PER UNIT  
 TOTAL FENESTRATION SF = 192.7 SF  
 TOTAL FACADE SF = 455.5 SF  
 % FENESTRATION = 42.31 %

**3 REAR ELEVATION**  
 SCALE: 3/16" = 1'-0"



FENESTRATION %  
 TOTAL FENESTRATION SF = 24.0 SF  
 TOTAL FACADE SF = 978.8 SF  
 % FENESTRATION = 2.45 %

**2 LEFT ELEVATION**  
 SCALE: 3/16" = 1'-0"



FENESTRATION % FRONTAGE A:  
 TOTAL FENESTRATION SF = 110.0 SF  
 TOTAL FACADE SF = 467.5 SF  
 % FENESTRATION = 23.53 %

FENESTRATION % FRONTAGE B:  
 TOTAL FENESTRATION SF = 110.0 SF  
 TOTAL FACADE SF = 467.5 SF  
 % FENESTRATION = 23.53 %

**1 FRONT ELEVATION**  
 SCALE: 3/16" = 1'-0"

| MATERIAL SCHEDULE |  |         |      |
|-------------------|--|---------|------|
| FRONT (STREET)    |  |         |      |
| S1                | FIBER CEMENT 7" REVEAL LAP - PAVESTONE SW 7642               | 572 SF  | 36%  |
| S2                | FIBER CEMENT BOARD AND BATTEN SIDING - GAUNTLET GRAY SW 7019 | 579 SF  | 36%  |
| S3                | FIBER CEMENT 7" REVEAL LAP - SNOWBOUND SW 7004               | 362 SF  | 23%  |
| S4                | JAMES HARDIE SMOOTH PANEL - GAUNTLET GRAY SW 7019            | 78 SF   | 5%   |
|                   |  | 1592 SF | 100% |
| LEFT              |  |         |      |
| S1                | FIBER CEMENT 7" REVEAL LAP - PAVESTONE SW 7642               | 593 SF  | 55%  |
| S2                | FIBER CEMENT BOARD AND BATTEN SIDING - GAUNTLET GRAY SW 7019 | 270 SF  | 25%  |
| S3                | FIBER CEMENT 7" REVEAL LAP - SNOWBOUND SW 7004               | 208 SF  | 19%  |
| S5                | JAMES HARDIE SMOOTH PANEL - SNOWBOUND SW 7004                | 10 SF   | 1%   |
|                   |  | 1080 SF | 100% |

| MATERIAL SCHEDULE |  |         |      |
|-------------------|--|---------|------|
| REAR (GARAGE)     |  |         |      |
| S1                | FIBER CEMENT 7" REVEAL LAP - PAVESTONE SW 7642               | 481 SF  | 53%  |
| S2                | FIBER CEMENT BOARD AND BATTEN SIDING - GAUNTLET GRAY SW 7019 | 403 SF  | 44%  |
| S3                | FIBER CEMENT 7" REVEAL LAP - SNOWBOUND SW 7004               | 23 SF   | 2%   |
|                   |  | 907 SF  | 100% |
| RIGHT             |  |         |      |
| S1                | FIBER CEMENT 7" REVEAL LAP - PAVESTONE SW 7642               | 643 SF  | 61%  |
| S2                | FIBER CEMENT BOARD AND BATTEN SIDING - GAUNTLET GRAY SW 7019 | 208 SF  | 20%  |
| S3                | FIBER CEMENT 7" REVEAL LAP - SNOWBOUND SW 7004               | 184 SF  | 17%  |
| S5                | JAMES HARDIE SMOOTH PANEL - SNOWBOUND SW 7004                | 18 SF   | 2%   |
|                   |  | 1052 SF | 100% |