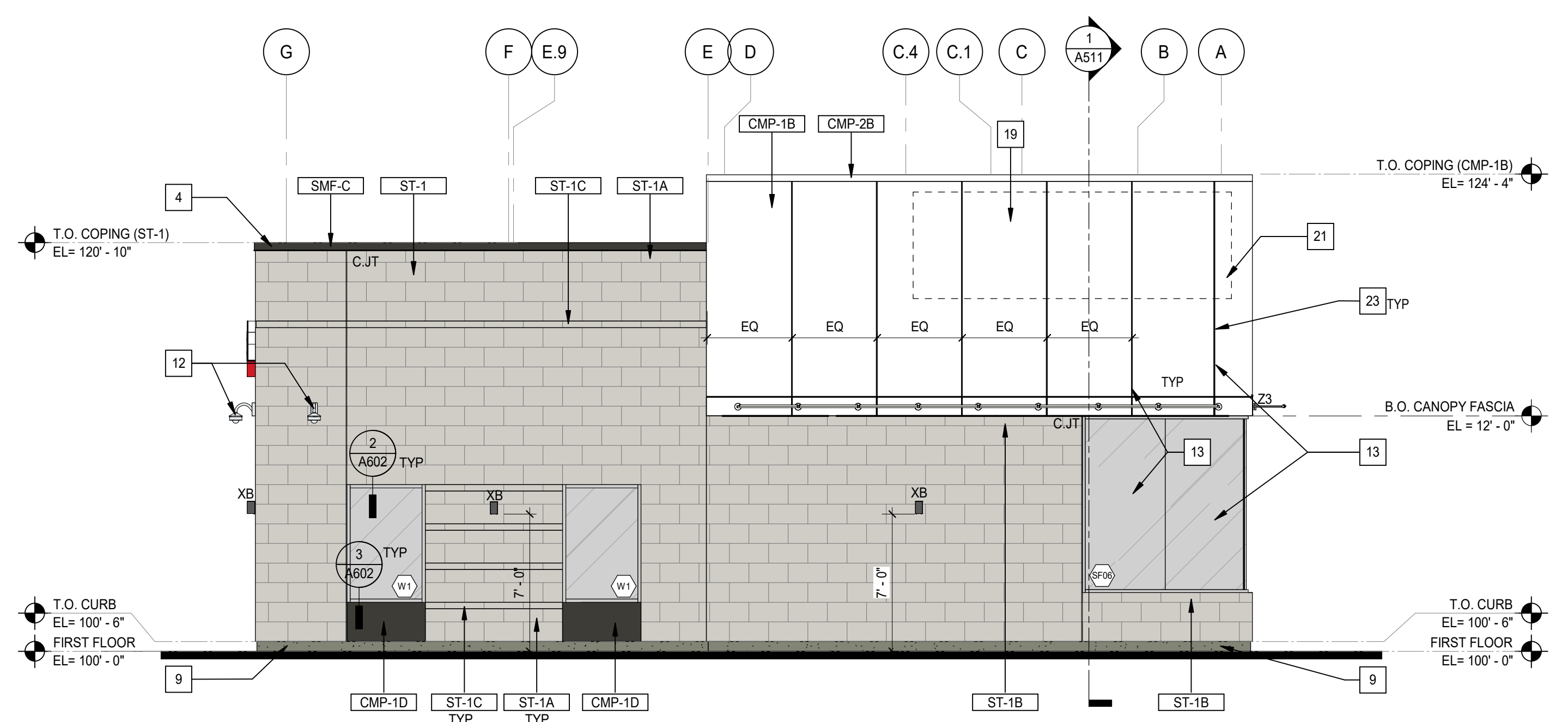
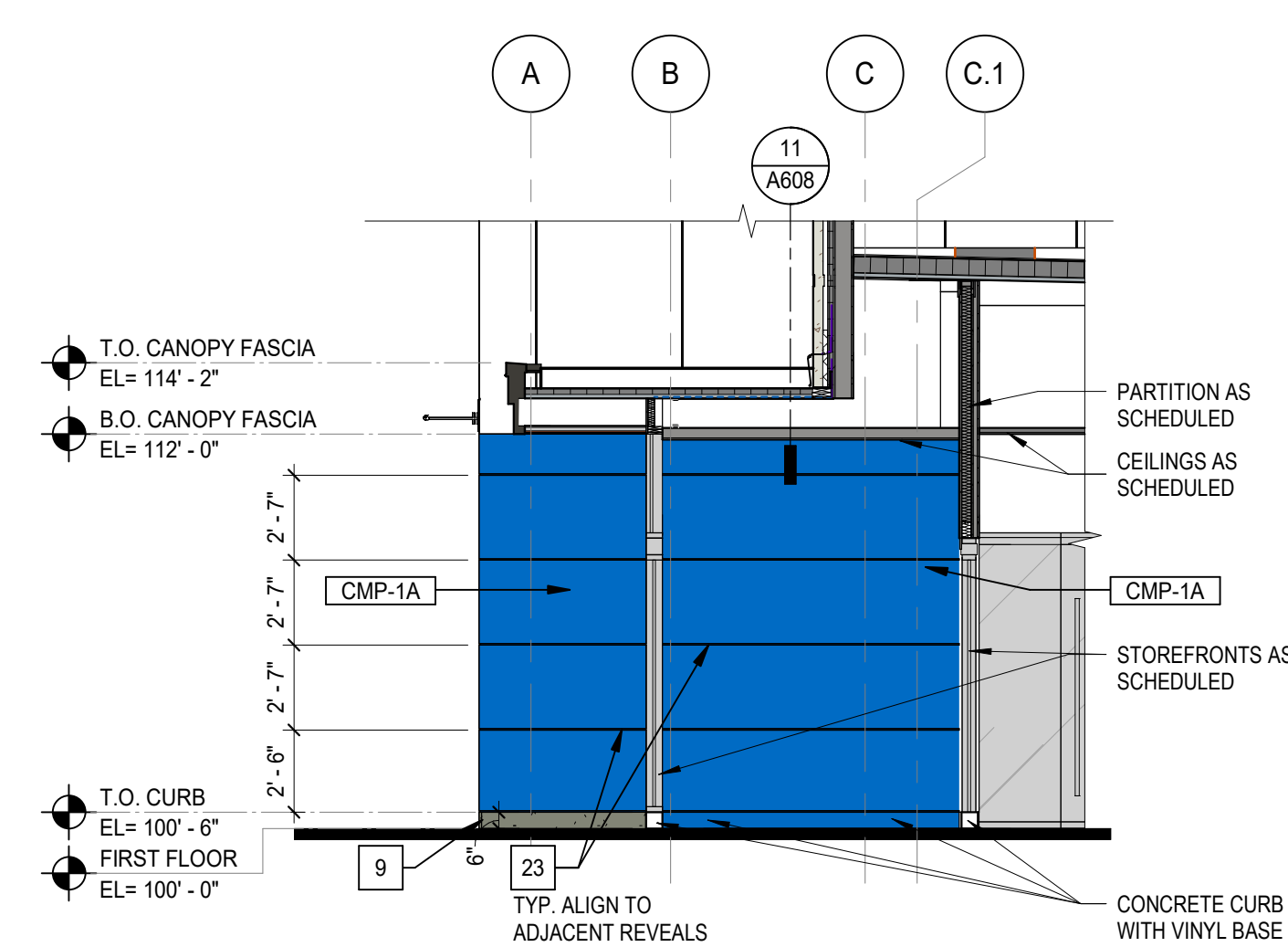


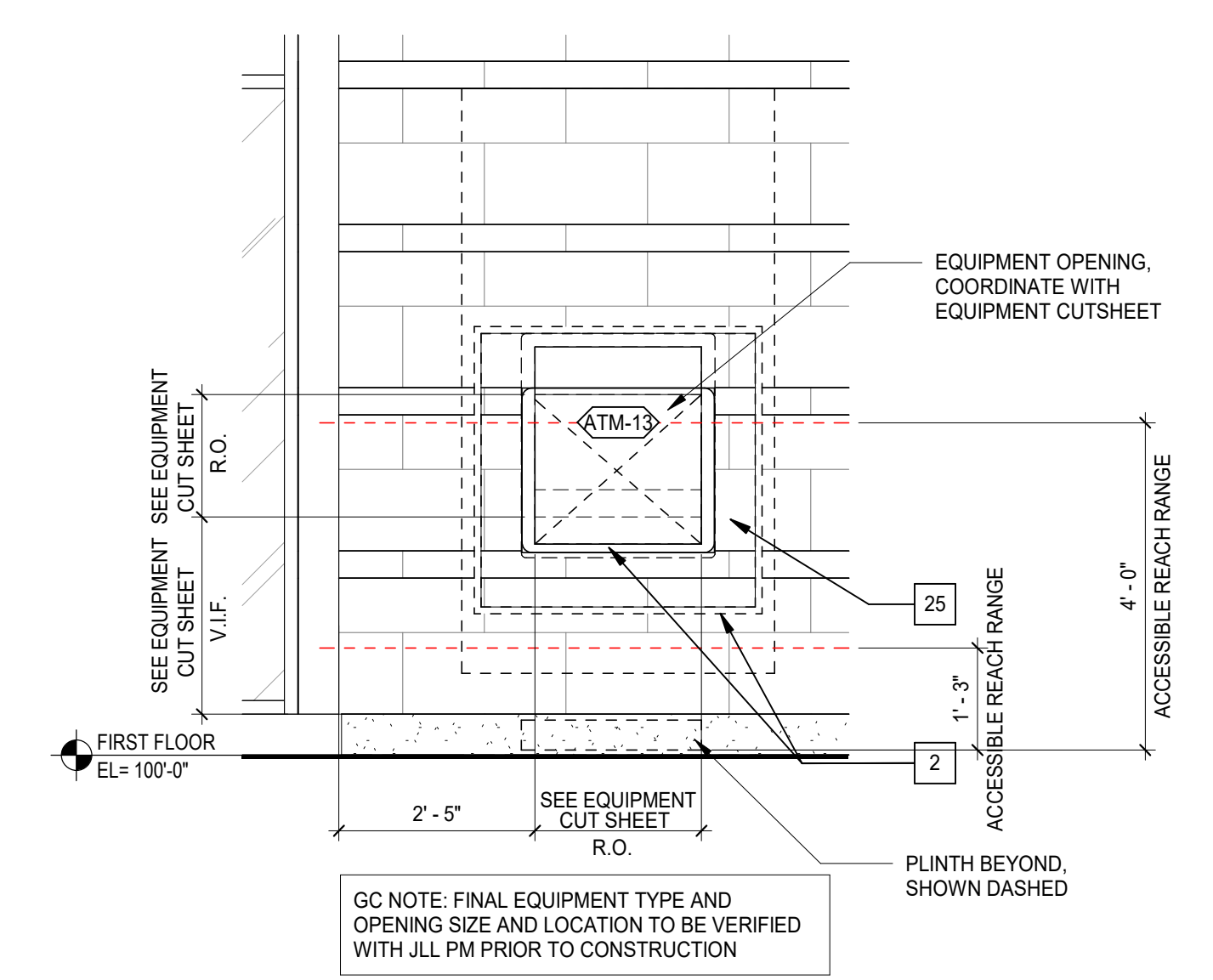
1 ELEVATION - NORTH
3/16" = 1'-0"



2 ELEVATION - EAST
3/16" = 1'-0"



3 VESTIBULE ELEVATION - EAST
3/16" = 1'-0"



4 THRU WALL EQUIPMENT ELEVATION
1/2" = 1'-0"

GENERAL NOTES - EXTERIOR ELEVATIONS

- A. SEE SHEET A301 FOR DOOR SCHEDULE AND WINDOW TYPES.
- B. SEE SHEET G003 FOR EXTERIOR MATERIAL SCHEDULE.
- C. SEE SHEET A201 FOR EXTERIOR SOFFIT FINISH AND HEIGHT INFORMATION.
- D. SEE EXTERIOR ELEVATIONS FOR CONTROL JOINT LOCATIONS. CONTRACTOR SHALL PROVIDE ADDITIONAL CONTROL JOINTS TO COMPLY WITH MAXIMUM SPACING REQUIREMENTS IN SPECIFICATIONS AND NATIONAL MASONRY INSTITUTE. PROVIDE A CONTROL JOINT AT ALL MASONRY REENTRANT CORNERS.
- E. ALL EXPOSED STRUCTURE SHALL BE GALVANIZED AND PAINTED PT-10 U.N.O.
- F. ALL EXTERIOR SIGNAGE TO BE ISSUED UNDER SEPARATE PACKAGE. SEPARATE APPLICATION TO BE SUBMITTED FOR REVIEW TO THE COMMUNITY DEVELOPMENT DEPARTMENT.
- G. SEE SHEET A001 FOR ADDITIONAL SITE INFORMATION, TRASH ENCLOSURE ELEVATIONS, DETAILS AND FINISHES.
- H. ALL BANK EQUIPMENT INFORMATION TO BE PROVIDED BY CONVERGENT TECHNOLOGIES. CONTACT INFORMATION IS PROVIDED ON COVER SHEET G000.

EXTERIOR ELEVATION LEGEND

CJT - CONTROL JOINT

KEYNOTES - EXTERIOR ELEVATIONS

NO.	DESCRIPTION
1	FIRE DEPARTMENT CONNECTION - SEE PLUMBING.
2	THRU-WALL ATM WITH SHROUD BY OTHERS. G.C. TO CONTACT US BANK EQUIPMENT VENDOR (CONVERGENT) TO OBTAIN CUTSHEETS AND VERIFY EQUIPMENT DIMENSIONS.
3	PAINT DOOR TO MATCH CMP-1D.
4	METAL CAP FLASHING.
5	DOOR OPERATOR POST BOLLARD BY HARDWARE SUPPLIER.
6	SCUPPER.
7	KNOX KEY BOX - 4400 OR 4200 SERIES.
8	BUILDING IDENTIFICATION NUMBER. COORDINATE FINAL LOCATION WITH FIRE MARSHALL. COORDINATE WITH JLL PM TO DETERMINE CORRECT BUILDING NUMBER. SEE SPECIFICATIONS FOR MORE INFORMATION.
9	6" CONCRETE CURB - SEE STRUCTURAL. CURB TO RECEIVE HAND RUBBED FINISH EXPOSED FACE.
10	BRICK SOLDIER COURSE.
11	NOT USED.
12	SECURITY CAMERA - SEE ELECTRICAL FOR POWER SUPPLY - VERIFY LOCATION IN FIELD WITH GC.
13	ALIGN GLAZING JOINTS & PANELS REVEALS, TYP.
14	OVERFLOW SCUPPER. MATCH DRIVE THRU CANOPY COLOR.
15	FORMED METAL COLUMN ENCLOSURE.
16	THRU-WALL OVERFLOW LAMBS TONGUE - SEE PLUMBING.
17	BOLLARDS.
18	IRRIGATION BACKFLOW PREVENTER - SEE PLUMBING.
19	SIGNAGE BY OTHERS.
20	ELECTRICAL TRANSFORMER WITH BOLLARDS - SEE ELECTRICAL.
21	DASHED LINES INDICATE IN WALL PLUMBING BLOCKING BY GENERAL CONTRACTOR - FOR SIGNAGE BY OTHERS. COORDINATE SIGN LOCATION WITH SIGNAGE VENDOR. SEE DETAILS ON SHEET A604 FOR MORE INFORMATION.
22	BRICK BACK - SEE SPECIFICATIONS.
23	1/2" METAL PANEL REVEALS.
24	TRASH ENCLOSURE - SEE A001 FOR MORE INFORMATION.
25	COORDINATE WITH ATM EQUIPMENT SUPPLIER FOR EXACT ROUGH OPENING DIMENSIONS. ENSURE ROUGH OPENINGS AND EQUIPMENT PLACEMENT COMPLES WITH ADA REACH REQUIREMENTS.
26	TRASH CAN - SEE SPECIFICATIONS.
27	BENCH - SEE SPECIFICATIONS.
28	METER / CT CABINET - SEE ELECTRICAL.

EXTERIOR WALL MATERIAL TOTALS

Mark	Description	Area	Percent
CMP-1A	Metal - Panel (CMP-1A) - Award Blue	123 SF	1%
CMP-1B	Metal - Panel (CMP-1B) - Brite White	1108 SF	12%
CMP-1D	Metal - Panel (CMP-1D) - Midnight Bronze	1248 SF	14%
CMP-2B	Metal - Panel (CMP-2B) - Stone White	443 SF	5%
FBR-1	Masonry - Brick (FBR-01)	2786 SF	30%
FBR-1S	Masonry - Brick (FBR-01) - Soldier Course	96 SF	1%
MCC-1C	Metal - Column Cover (MCC-1C) - Classic Bronze	284 SF	3%
SMF-C	Metal - Sheet Metal Flashing (SMF-C) - Classic Bronze	1183 SF	13%
ST-1	Masonry - Limestone (ST-1)	1940 SF	21%

LIGHT FIXTURE SCHEDULE

- LIGHT 'XA' - UNDER CANOPY LIGHT - SEE REFLECTED CEILING PLAN FOR LOCATIONS**
MANUFACTURER: BEGA
STYLE: RECESSED CEILING DOWNLIGHT
MODEL: BEGA 24 814-K35-BLK
SIZE: 6" SQUARE
LAMP: LED
DIMMING: 0-10V
MOUNTING: RECESSED
COLOR TEMP: 3500 K
VOLTAGE: 120-277V AC
- LIGHT 'XB' - WALL SCOFF**
MANUFACTURER: BEGA
STYLE: WALL LUMINAIRE
MODEL: BEGA 33 891-K35-BLK
SIZE: V4 3/8" X L 5" X H 7.12"
LAMP: LED
DIMMING: 0-10V
MOUNTING: WALL
COLOR TEMP: 3500 K
VOLTAGE: 120-277V AC
- LIGHT 'XWP' - WALL PACK**
MANUFACTURER: BEGA
STYLE: WALL LUMINAIRE
MODEL: BEGA 22 358-K35-BLK
SIZE: W 8 1/2" X L 4" X H 4 3/8"
LAMP: LED
DIMMING: 0-10V
MOUNTING: WALL
COLOR TEMP: 3500K
VOLTAGE: 120-277V AC
- LIGHT 'XK' - EXTERIOR STOP GO LIGHT**
MANUFACTURER: SIGNAL TECH
STYLE: STOP GO LIGHTS
FINISH: DURANGO BRONZE FINISH
MODEL: TCL718GR-100
SIZE: 7H X 18W X 2.6D
LAMP: LED
VOLTAGE: 120-277V AC
- LIGHT 'XJ' - ATM CANOPY LIGHT - SEE REFLECTED CEILING PLAN FOR LOCATION**
MANUFACTURER: BEGA
STYLE: RECESSED
MODEL: 24 814
LAMP: LED
DIMMING: 0-10V
MOUNTING: RECESSED
COLOR TEMP: 3500K
VOLTAGE: 120-277V VAC
- LIGHT 'Z3' - 3'-0" WALL MOUNT**
MANUFACTURER: ELLIPTIPAR
STYLE: 3'-0" WALL MOUNT
FINISH: WHITE
MODEL: S151-R03M-H-02-M-OD-0-840-00
SIZE: 24" CANTILEVER
LAMP: LED
VOLTAGE: 120-277V AC

EXTERIOR MATERIAL BOARD

BRICK - (FBR-1)
MANGANESE BROWN

STONE - (ST-1) - 12" HIGH X 24" WIDE (ST-1A) - 8" HIGH X 24" WIDE (ST-1B) - 4" HIGH X 24" WIDE (ST-1C) - 4" HIGH X 24" WIDE

INDIANA LIMESTONE COMPANY
WARRICK, IN
LIMITED RANGE

METAL PANELS - (CMP-1C, CMP-1A, CMP-1B)
FAC CLAD SHEET METAL

CMP-1A_AWARD BLUE CMP-1B_BRITE WHITE CMP-1D_MIDNIGHT BRONZE

METAL FASCIA / TRIM - (SMF-C, CMP-2B)
FAC CLAD SHEET METAL

SMF-C_CLASSIC BRONZE CMP-2B_BRITE WHITE

FORMED METAL COLUMN COVERS - (MCC-1C)
REINFORCED FAC CLAD COMPOSITE PANELS

MCC-1C_CLASSIC BRONZE

METAL SOFFIT PANEL - (MCS-1A, MCS-1B)

MCS-1A_CERTAINTED 180" LINEAR 600" WALKWAY

ALUMINUM WINDOWS - (WF-1, WF-2 AND WF-3)
SEE SPECIFICATIONS AND WINDOW TYPES ON A001 FOR MORE INFORMATION

ANODIC CLEAR

PAINT - (PT-10)
BRUSHABLE MOORE HC-168 KENDALL CHARCOAL

NOT USED

Project No. 1485487DF6
Drawn By: NS, MRL
Checked By: MRL, DC
Date: 04/23/2025

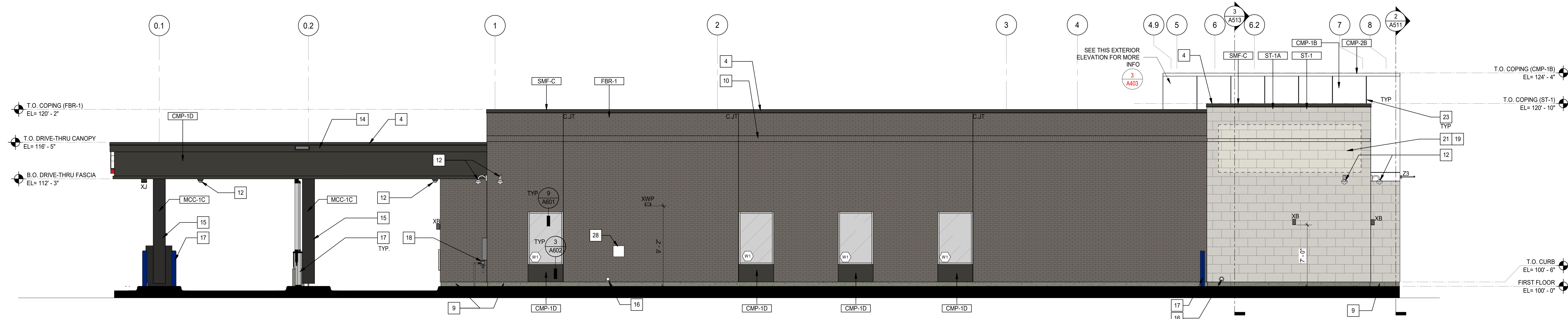
NOTICE: The designs shown and described herein including all technical drawings, graphics, and models thereof, are proprietary and cannot be copied, duplicated or commercially exploited, in whole or in part, without express written permission of RSP Architects. These are available for limited review and evaluation by clients, consultants, contractors, government agencies, vendors and office personnel only in accordance with this notice.

© Copyright RSP Architects 2025. All rights reserved.

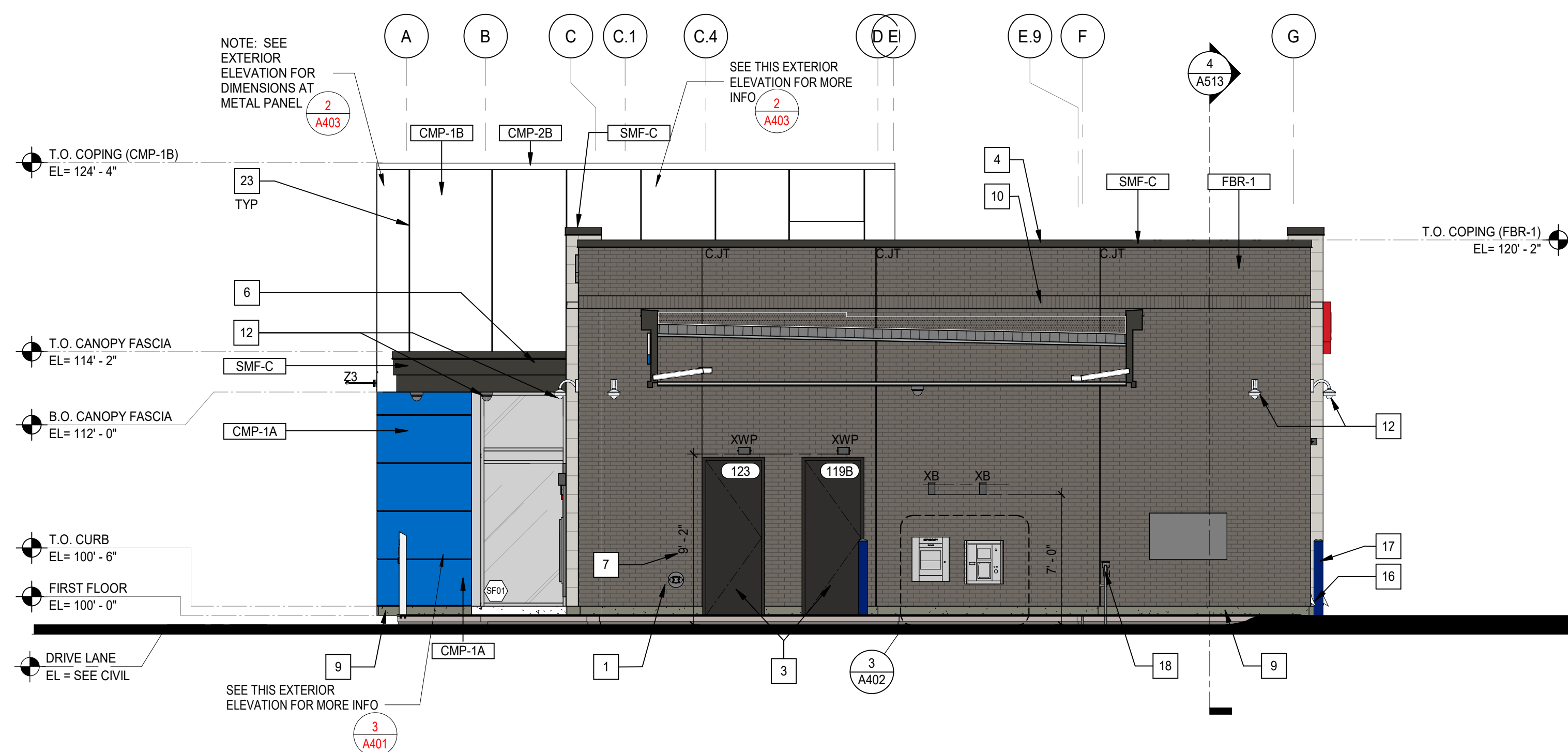
ISSUES / REVISIONS

NO.	DATE	DESCRIPTION
A	05/22/2025	P&Z Response 1

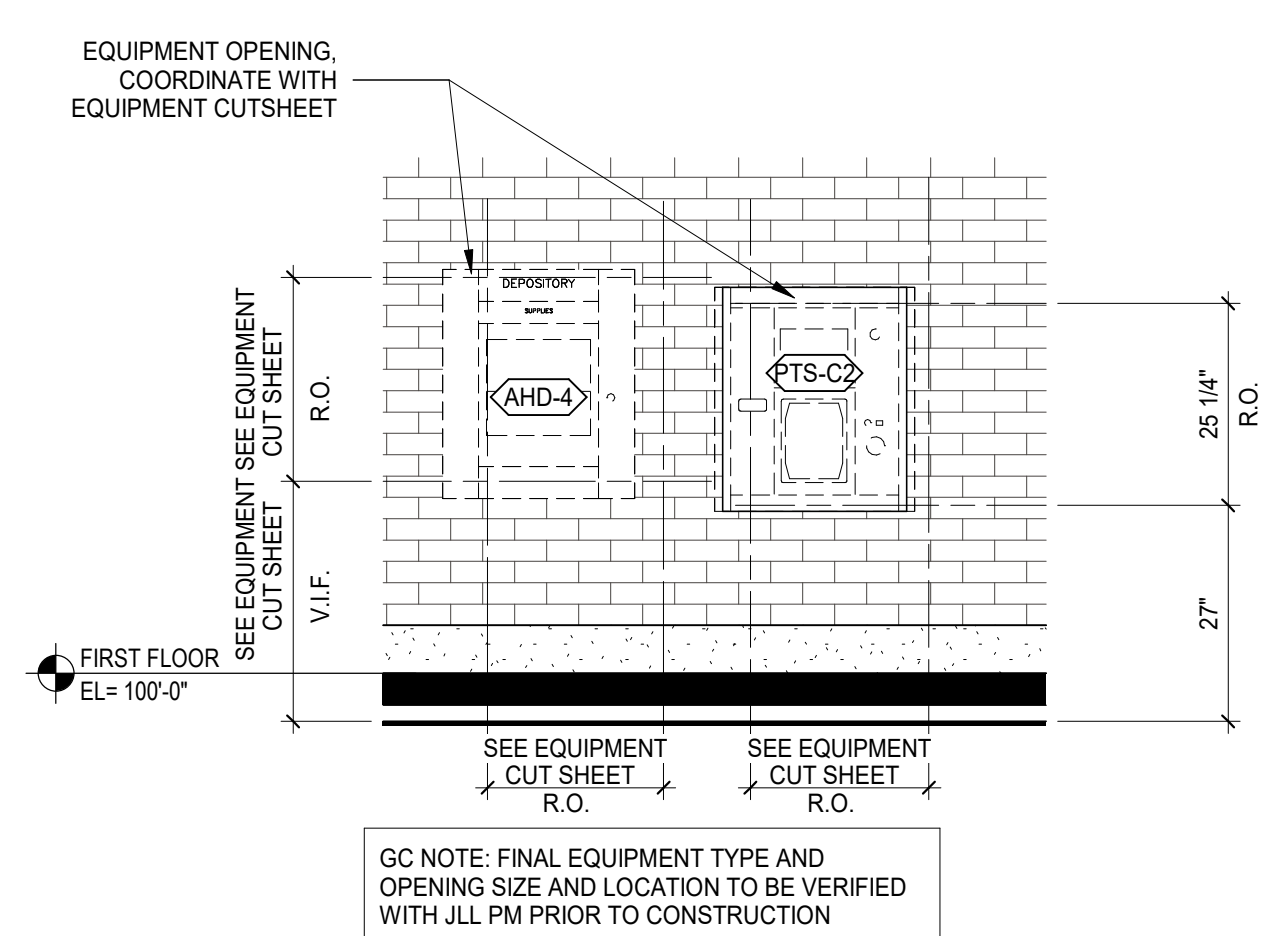
ALL BIDDING QUESTIONS TO BE DIRECTED TO THE JLL PROJECT MANAGERS. SEE SHEET G000.



1 ELEVATION - SOUTH
3/16" = 1'-0"



2 ELEVATION - WEST
3/16" = 1'-0"



3 THRU WALL EQUIPMENT ELEVATION
1/2" = 1'-0"

GENERAL NOTES - EXTERIOR ELEVATIONS

- A. SEE SHEET A301 FOR DOOR SCHEDULE AND WINDOW TYPES.
- B. SEE SHEET G003 FOR EXTERIOR MATERIAL SCHEDULE.
- C. SEE SHEET A201 FOR EXTERIOR SOFFIT FINISH AND HEIGHT INFORMATION.
- D. SEE EXTERIOR ELEVATIONS FOR CONTROL JOINT LOCATIONS. CONTRACTOR SHALL PROVIDE ADDITIONAL CONTROL JOINTS TO COMPLY WITH MAXIMUM SPACING REQUIREMENTS IN SPECIFICATIONS AND NATIONAL MASONRY INSTITUTE. PROVIDE A CONTROL JOINT AT ALL MASONRY REENTRANT CORNERS.
- E. ALL EXPOSED STRUCTURE SHALL BE GALVANIZED AND PAINTED PT-10 U.N.O.
- F. ALL EXTERIOR SIGNAGE TO BE ISSUED UNDER SEPARATE PACKAGE. SEPARATE APPLICATION TO BE SUBMITTED FOR REVIEW TO THE COMMUNITY DEVELOPMENT DEPARTMENT.
- G. SEE SHEET A001 FOR ADDITIONAL SITE INFORMATION, TRASH ENCLOSURE ELEVATIONS, DETAILS AND FINISHES.
- H. ALL BANK EQUIPMENT INFORMATION TO BE PROVIDED BY CONVERGENT TECHNOLOGIES. CONTACT INFORMATION IS PROVIDED ON COVER SHEET G000.

EXTERIOR ELEVATION LEGEND

CJT - CONTROL JOINT

KEYNOTES - EXTERIOR ELEVATIONS

NO.	DESCRIPTION
1	FIRE DEPARTMENT CONNECTION - SEE PLUMBING.
2	THRU-WALL ATM WITH SHROUD BY OTHERS. G.C. TO CONTACT US BANK EQUIPMENT VENDOR (CONVERGENT) TO OBTAIN CUTSHEETS AND VERIFY EQUIPMENT DIMENSIONS.
3	PAINT DOOR TO PATCH CMP-1D.
4	METAL CAP FLASHING.
5	DOOR OPERATOR POST BOLLARD BY HARDWARE SUPPLIER.
6	SCUPPER.
7	KNOX KEY BOX - 4400 OR 4200 SERIES.
8	BUILDING IDENTIFICATION NUMBER. COORDINATE FINAL LOCATION WITH FIRE MARSHALL. COORDINATE WITH JLL PM TO DETERMINE CORRECT BUILDING NUMBER. SEE SPECIFICATIONS FOR MORE INFORMATION.
9	CONCRETE CURBS - SEE STRUCTURAL. CURB TO RECEIVE HAND RUBBED FINISH EXPOSED FACE.
10	BRICK SOLDIER COURSE.
11	NOT USED.
12	SECURITY CAMERA - SEE ELECTRICAL FOR POWER SUPPLY - VERIFY LOCATION IN FIELD WITH GC.
13	ALIGN GLAZING JOINTS & PANELS REVEALS, TYP.
14	OVERFLOW SCUPPER, MATCH DRIVE THRU CANOPY COLOR.
15	FORMED METAL COLUMN ENCLOSURE.
16	THRU-WALL OVERFLOW LAMBS TONGUE - SEE PLUMBING.
17	BOLLARDS.
18	IRRIGATION BACKFLOW PREVENTER - SEE PLUMBING.
19	SIGNAGE BY OTHERS.
20	ELECTRICAL TRANSFORMER WITH BOLLARDS - SEE ELECTRICAL.
21	DASHED LINES INDICATE IN-WALL PLYWOOD BLOCKING BY GENERAL CONTRACTOR - FOR SIGNAGE BY OTHERS. COORDINATE SIGN LOCATION WITH SIGNAGE VENDOR. SEE DETAILS ON SHEET A604 FOR MORE INFORMATION.
22	BRICK BRACK - SEE SPECIFICATIONS.
23	1/2" METAL PANEL REVEALS.
24	TRASH ENCLOSURE - SEE A001 FOR MORE INFORMATION.
25	COORDINATE WITH ATM EQUIPMENT SUPPLIER FOR EXACT ROUGH OPENING DIMENSIONS. ENSURE ROUGH OPENINGS AND EQUIPMENT PLACEMENT COMPLES WITH ADA REACH REQUIREMENTS.
26	TRASH CAN - SEE SPECIFICATIONS.
27	BENCH - SEE SPECIFICATIONS.
28	METER / CT CABINET - SEE ELECTRICAL.

EXTERIOR WALL MATERIAL TOTALS

Mark	Description	Area	Percent
CMP-1A	Metal - Panel (CMP-1A) - Award Blue	123 SF	1%
CMP-1B	Metal - Panel (CMP-1B) - Brite White	1108 SF	12%
CMP-1D	Metal - Panel (CMP-1D) - Midnight Bronze	1248 SF	14%
CMP-2B	Metal - Panel (CMP-2B) - Stone White	443 SF	5%
FBR-1S	Masonry - Brick (FBR-01) - Soldier Course	2786 SF	30%
FBR-1S	Masonry - Brick (FBR-01) - Solder Course	96 SF	1%
MCC-1C	Metal - Column Cover (MCC-1C) - Classic Bronze	284 SF	3%
SMF-C	Metal - Sheet Metal Flashing (SMF-C) - Classic Bronze	1183 SF	13%
ST-1	Masonry - Limestone (ST-1)	1940 SF	21%

LIGHT FIXTURE SCHEDULE

- LIGHT 'XA' - UNDER CANOPY LIGHT - SEE REFLECTED CEILING PLAN FOR LOCATIONS**
MANUFACTURER: BEGA
STYLE: RECESSED CEILING DOWNLIGHT
MODEL: BEGA 24 814-K35-BLK
SIZE: 6" SQUARE
LAMP: LED
DIMMING: 0-10V
MOUNTING: RECESSED
COLOR TEMP: 3500 K
VOLTAGE: 120-277V AC
- LIGHT 'XB' - WALL SCOFF**
MANUFACTURER: BEGA
STYLE: WALL LUMINAIRE
MODEL: BEGA 33 891-K35-BLK
SIZE: W 4 3/8" X L 9" X H 17 1/2"
LAMP: LED
DIMMING: 0-10V
MOUNTING: WALL
COLOR TEMP: 3500 K
VOLTAGE: 120-277V AC
- LIGHT 'XWP' - WALL PACK**
MANUFACTURER: BEGA
STYLE: WALL LUMINAIRE
MODEL: BEGA 22 358-K35-BLK
SIZE: W 6 1/2" X L 4" X H 4 3/8"
LAMP: LED
DIMMING: 0-10V
MOUNTING: WALL
COLOR TEMP: 3500K
VOLTAGE: 120-277V AC
- LIGHT 'XK' - EXTERIOR STOP GO LIGHT**
MANUFACTURER: SIGNAL TECH
STYLE: STOP GO LIGHTS
FINISH: DURANODING BRONZE FINISH
MODEL: TCL718GR-100
SIZE: 7H X 18W X 2.6D
LAMP: LED
VOLTAGE: 120-277V AC
- LIGHT 'XJ' - ATM CANOPY LIGHT - SEE REFLECTED CEILING PLAN FOR LOCATION**
MANUFACTURER: BEGA
STYLE: RECESSED
MODEL: 24 814
LAMP: LED
DIMMING: RECESSED
COLOR TEMP: 3500K
VOLTAGE: 120-277V AC
- LIGHT 'Z3' - 3'-0" WALL MOUNT**
MANUFACTURER: ELLIPTIPAR
STYLE: 3'-0" WALL MOUNT
FINISH: WHITE
MODEL: S151-R03M-H-02-M-OD-O-840-00
SIZE: 24" CANTILEVER
LAMP: LED
VOLTAGE: 120-277V AC

EXTERIOR MATERIAL BOARD

BRICK - (FBR-1)
MANGANESE BROWN

STONE - (ST-1) - 12" HIGH X 24" WIDE (ST-1B) - 8" HIGH X 24" WIDE (ST-1C) - 4" HIGH X 24" WIDE (ST-1D) - 2" HIGH X 24" WIDE

METAL PANELS - (CMP-1A, CMP-1B, CMP-1D)
COMPOSITE PANELS

METAL FASCIA / TRIM - (SMF-C, CMP-2B)
FAC CLAD SHEET METAL

FORMED METAL COLUMN COVERS - (MCC-1C)
REINFORCED FAC CLAD COMPOSITE PANELS

METAL SOFFIT PANEL - (MCC-1A)
MCC-1B

MCC-1A - CERTAINTED
180' LINEAR 600' MAXIMUM

ALUMINUM WINDOWS - (WF-1, WF-2 AND WF-3)
SEE SPECIFICATIONS AND WINDOW TYPES ON A301 FOR MORE INFORMATION

ANODIC CLEAR

PAINT - (PT-10)
BERNHARD WOOD HC-168 KENDALL CHARCOAL

NOT USED

Project No. 1485487DF6
Drawn By NS, MRL
Checked By MRL, DC

Date 04/23/2025

NOTICE: The designs shown and described herein including all technical drawings, graphics, and models thereof, are proprietary and cannot be copied, duplicated or commercially exploited, in whole or in part, without express written permission of RSP Architects. These are available for limited review and evaluation by clients, consultants, contractors, government agencies, vendors and office personnel only in accordance with this Notice.

© Copyright RSP Architects 2025. All rights reserved.

ISSUES / REVISIONS

NO. DATE DESCRIPTION

A 05/22/2025 P&Z Response 1

ALL BIDDING QUESTIONS TO BE DIRECTED TO THE JLL PROJECT MANAGERS. SEE SHEET G000.

EXTERIOR ELEVATIONS

A402

