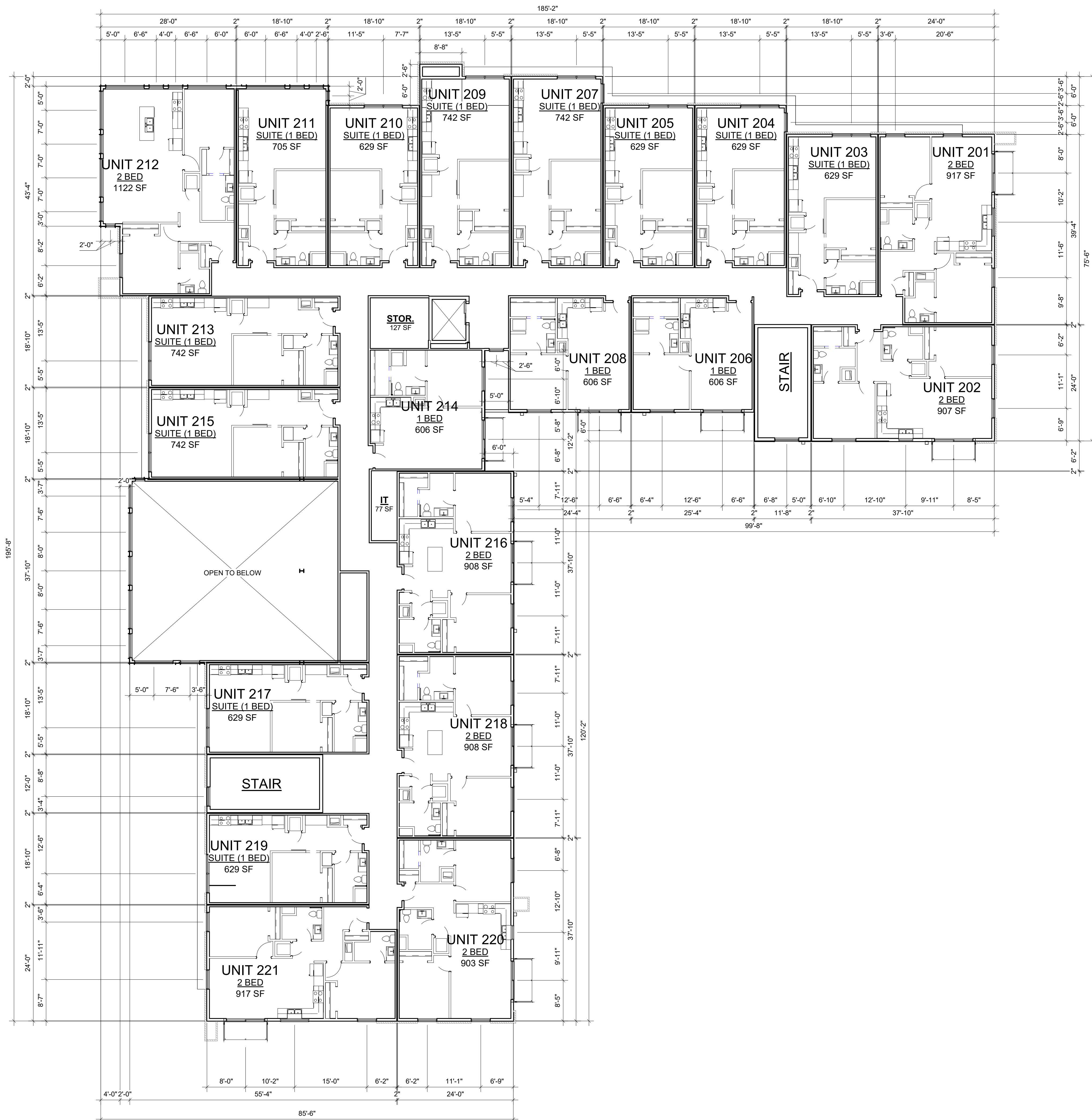


| UNIT SCHEDULE | | |
|-----------------|------|--------------------|
| TYPE | QTY. | AREA |
| 1 BED | 13 | 606 SF |
| 1 BED + DEN | 1 | 803 SF |
| 2 BED | 26 | 903 SF ... 1122 SF |
| SUITE (1 BED) | 51 | 629 SF ... 742 SF |
| Grand total: 91 | | |

NORTH ① **1ST FLOOR**
SCALE: 3/32" = 1'-0"



| UNIT SCHEDULE | | |
|-----------------|------|--------------------|
| TYPE | QTY. | AREA |
| 1 BED | 13 | 606 SF |
| 1 BED + DEN | 1 | 803 SF |
| 2 BED | 26 | 903 SF ... 1122 SF |
| SUITE (1 BED) | 51 | 629 SF ... 742 SF |
| Grand total: 91 | | |

NORTH ① **2ND FLOOR**
SCALE: 3/32" = 1'-0"



| UNIT SCHEDULE | | |
|-----------------|------|--------------------|
| TYPE | QTY. | AREA |
| 1 BED | 13 | 606 SF |
| 1 BED + DEN | 1 | 803 SF |
| 2 BED | 26 | 903 SF ... 1122 SF |
| SUITE (1 BED) | 51 | 629 SF ... 742 SF |
| Grand total: 91 | | |

NORTH ① **3RD - 4TH FLOORS**
SCALE: 3/32" = 1'-0"

PROJECT: **Kettlestone Central Mixed Use**

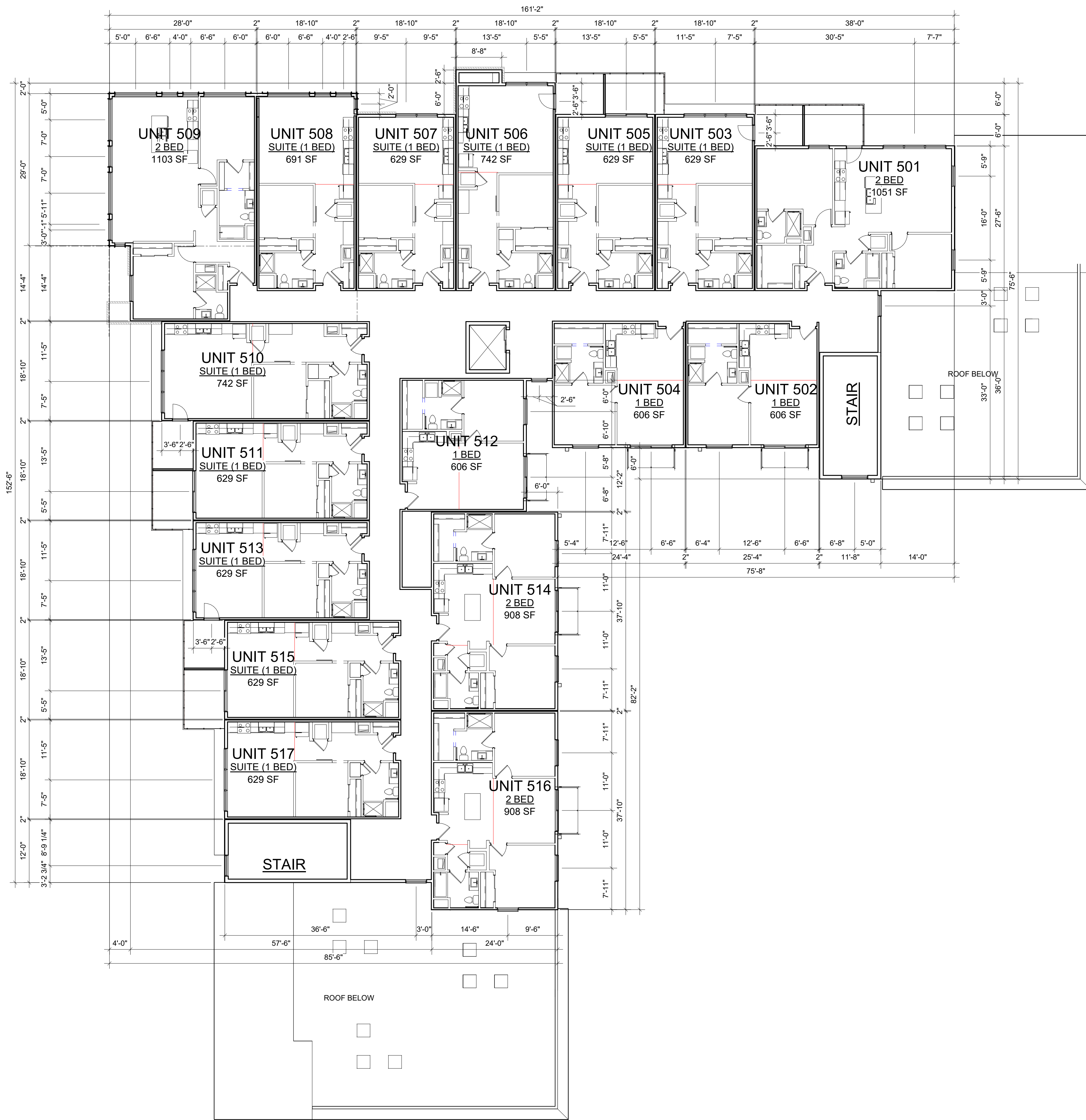
REVISIONS:

08 / 05 / 2025

PROJECT NO: 24-019

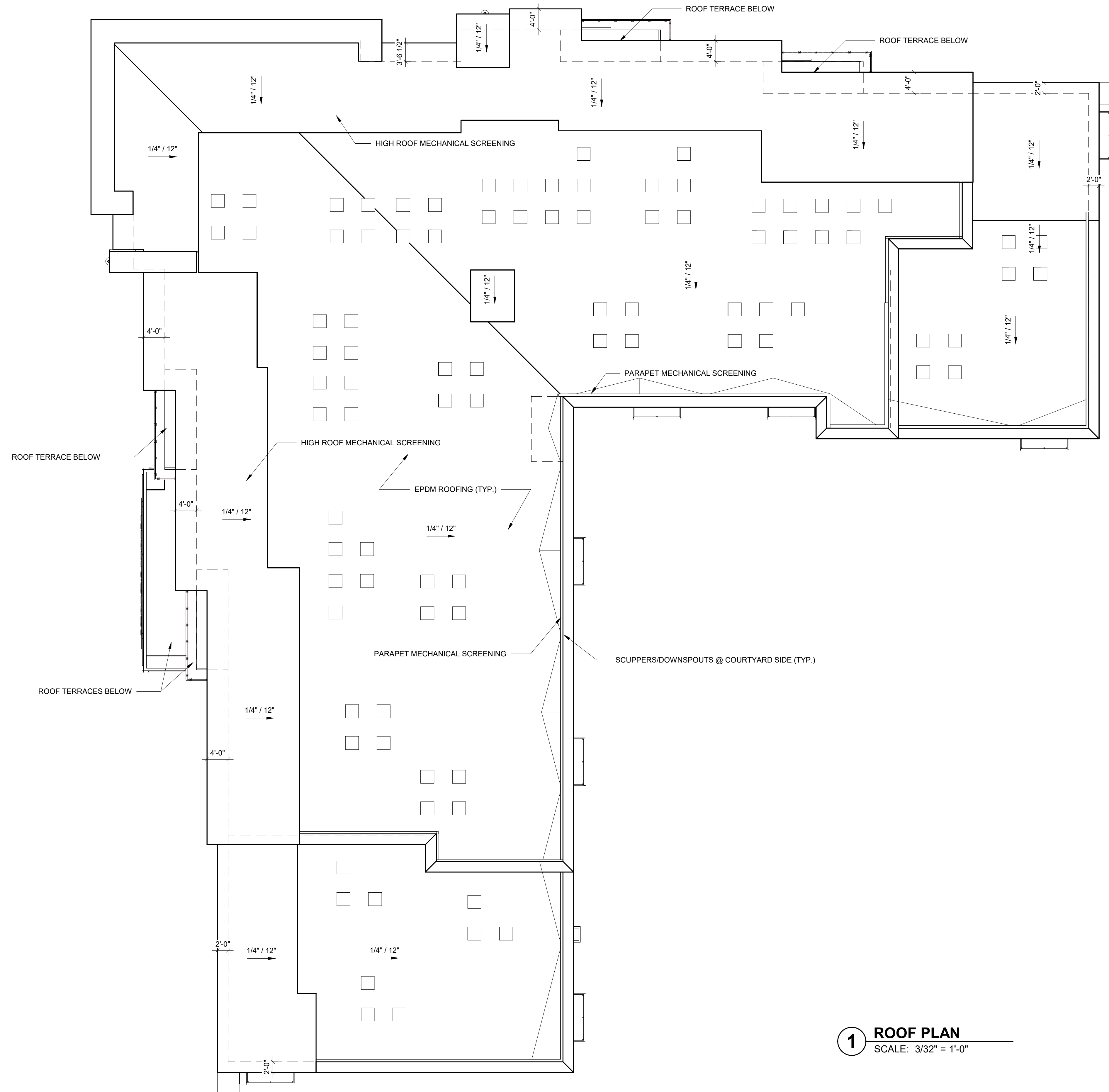
CONTENTS:
3rd-4th Floor Plans

SHEET NO:
A103



| UNIT SCHEDULE | | |
|-----------------|------|--------------------|
| TYPE | QTY. | AREA |
| 1 BED | 13 | 606 SF |
| 1 BED + DEN | 1 | 803 SF |
| 2 BED | 26 | 903 SF ... 1122 SF |
| SUITE (1 BED) | 51 | 629 SF ... 742 SF |
| Grand total: 91 | | |

NORTH **1** 5TH FLOOR
 SCALE: 3/32" = 1'-0"



1 ROOF PLAN
SCALE: 3/32" = 1'-0"

REVISIONS:

| | |
|--|--|
| | |
| | |
| | |

08 / 05 / 2025

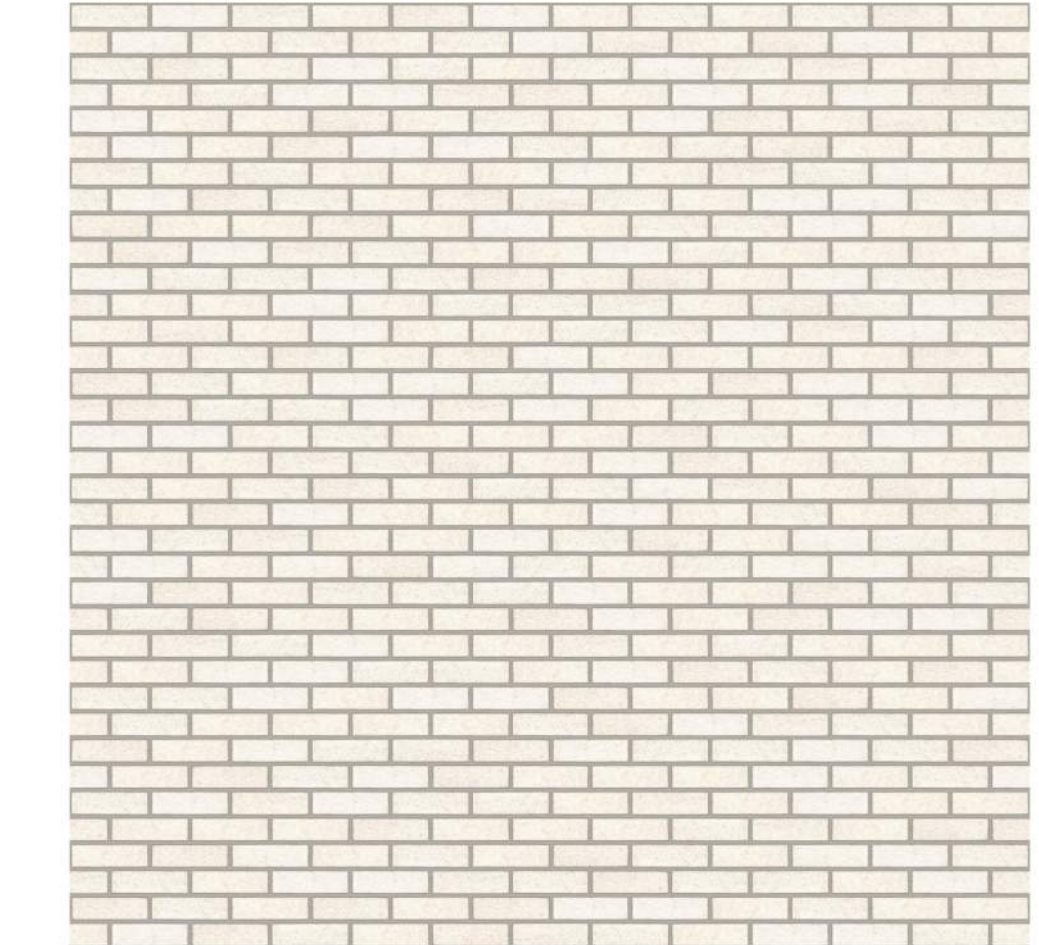
PROJECT NO: 24-019

CONTENTS:
Roof Plan

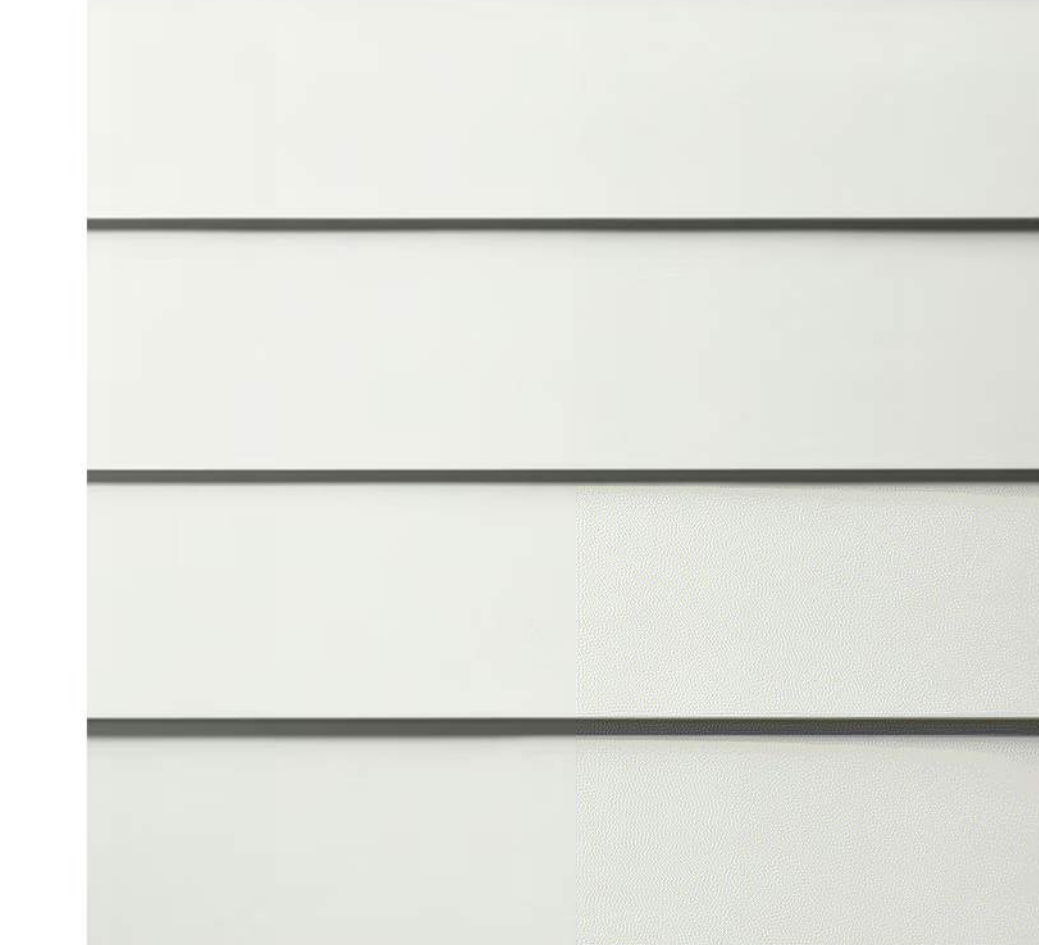
SHEET NO:
A105

MATERIAL SCHEDULE

| Mark | Description | Area | Percentage |
|------|----------------------------------|----------|------------|
| B1 | Modular Brick - Light | 13323 SF | 38.2% |
| S1 | Fiber Cement Panel Siding - Dark | 16901 SF | 48.4% |
| S2 | Fiber Cement Lap Siding - Light | 4668 SF | 13.4% |



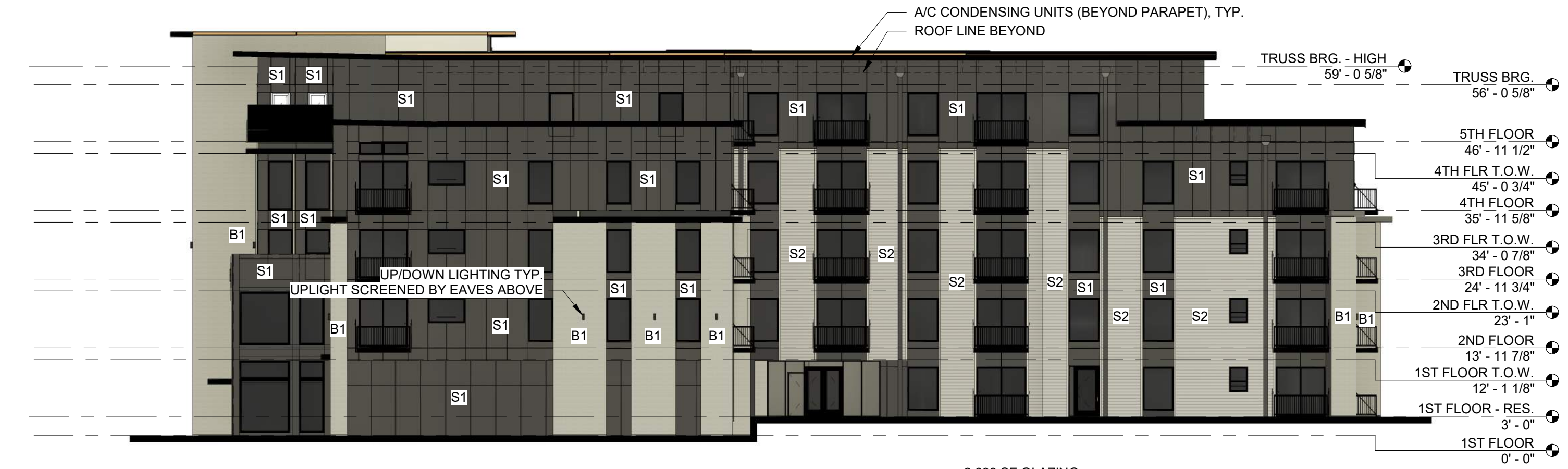
BRICK - MODULAR - LIGHT



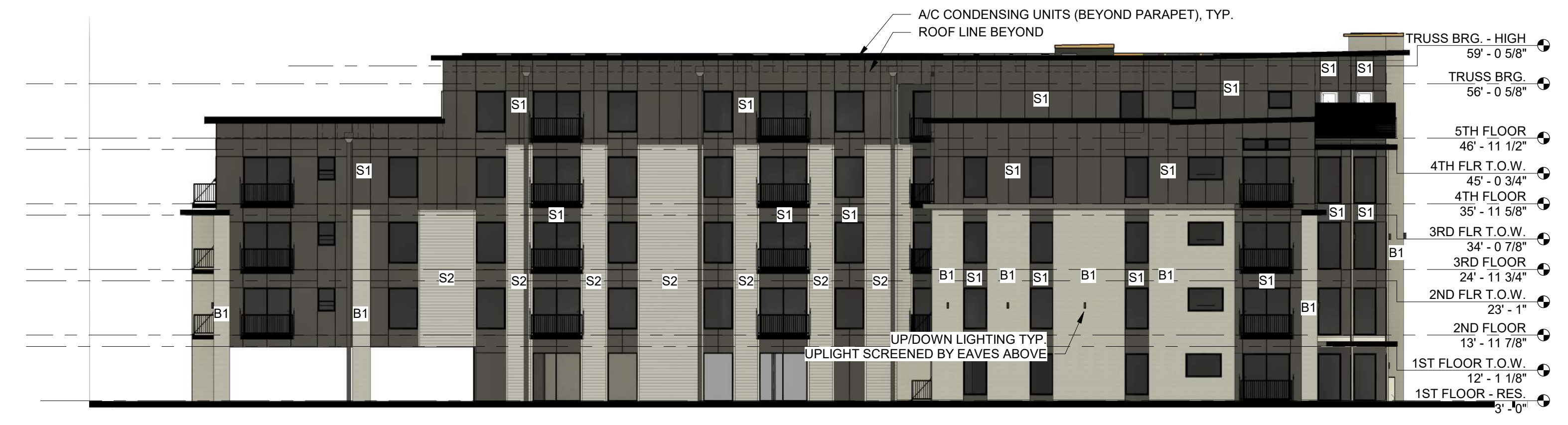
FIBER CEMENT LAP SIDING - LIGHT



FIBER CEMENT PANEL SIDING - DARK



4 SOUTH ELEVATION
SCALE: 1/16" = 1'-0"
2,688 SF GLAZING
10,875 SF TOTAL
24.7% GLAZING



3 EAST ELEVATION
SCALE: 1/16" = 1'-0"
2,778 SF GLAZING
10,724 SF TOTAL
25.9% GLAZING



2 WEST ELEVATION
SCALE: 1/16" = 1'-0"
4,169 SF GLAZING
11,684 SF TOTAL
35.7% GLAZING
1,058 SF GLAZING (1ST FLOOR)
2,262 SF TOTAL (1ST FLOOR)
46.8% GLAZING (1ST FLOOR)



1 NORTH ELEVATION
SCALE: 1/16" = 1'-0"
4,088 SF GLAZING
11,033 SF TOTAL
37% GLAZING
958 SF GLAZING (1ST FLOOR)
2,354 SF TOTAL (1ST FLOOR)
40.7% GLAZING



1 VIEW FROM SW
SCALE:



2 VIEW FROM NW
SCALE:



3 VIEW FROM WEST
SCALE: