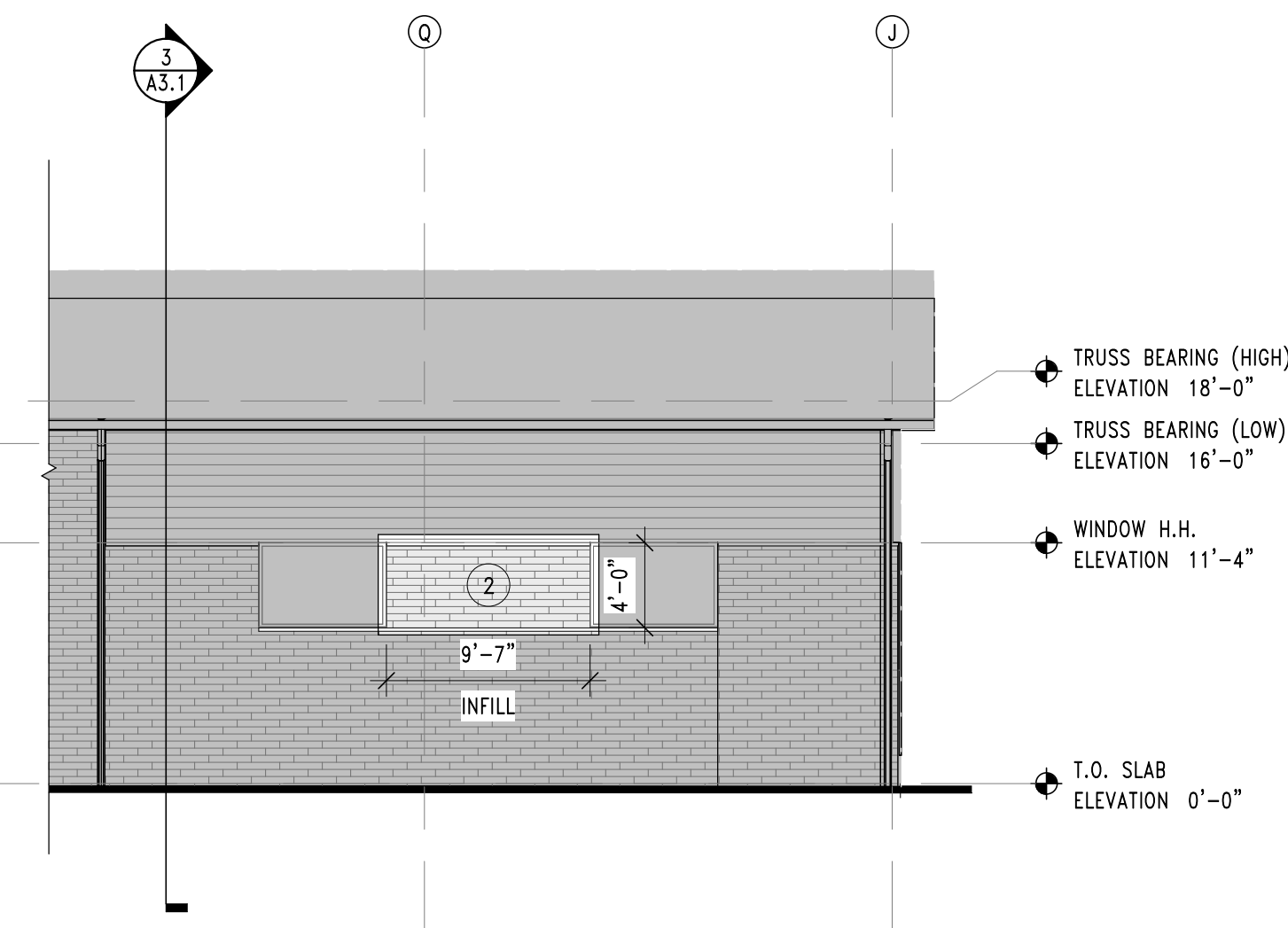
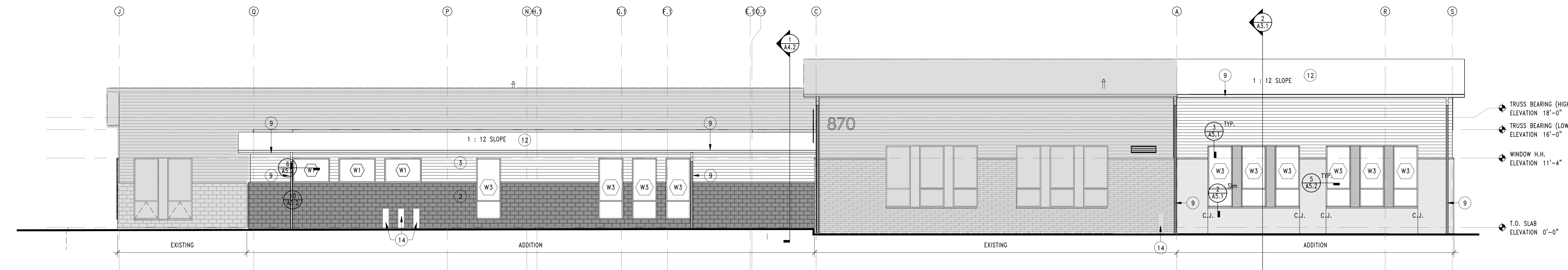


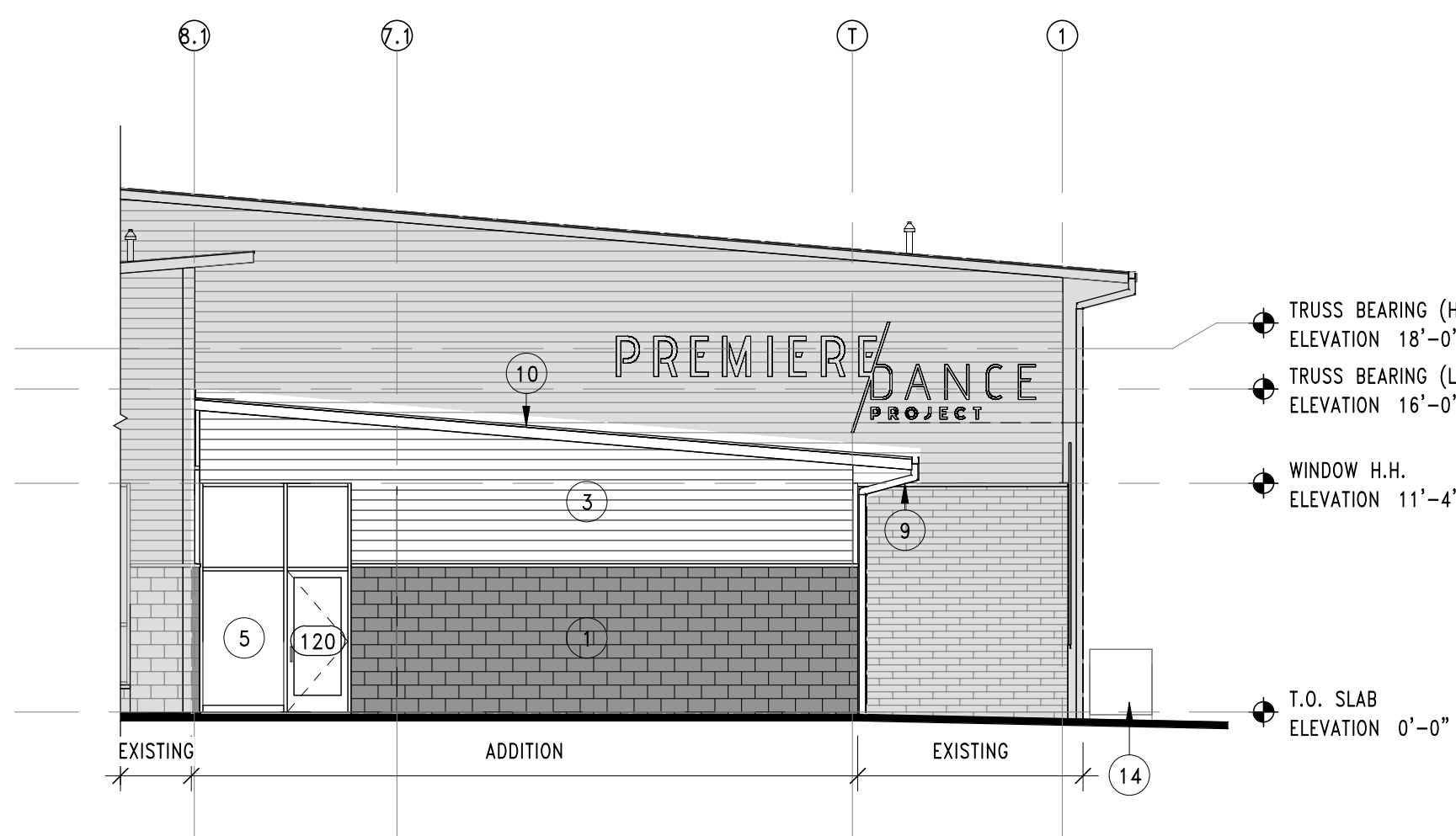
4 EXTERIOR ELEVATION - SOUTH ADDITION
SCALE: 1/8" = 1'-0"



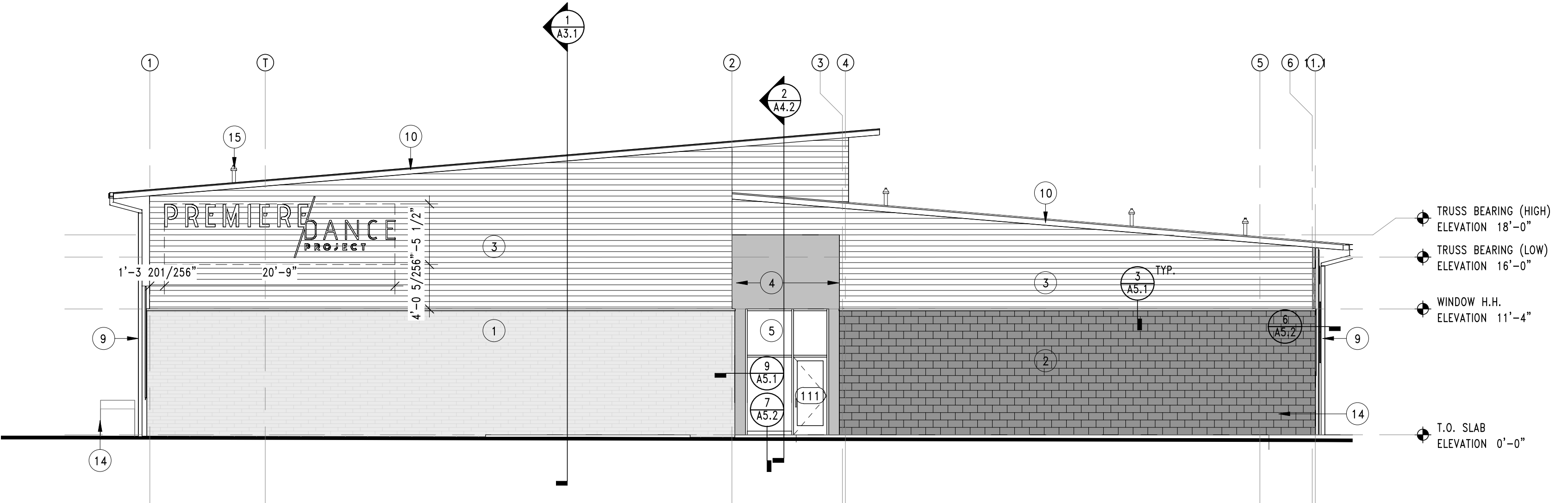
3 EXTERIOR ELEVATION - NORTH ADDITION
SCALE: 1/8" = 1'-0"



1 EXTERIOR ELEVATION - WEST ADDITION
SCALE: 1/8" = 1'-0"



2 EXTERIOR ELEVATION - EAST ADDITION
SCALE: 1/8" = 1'-0"

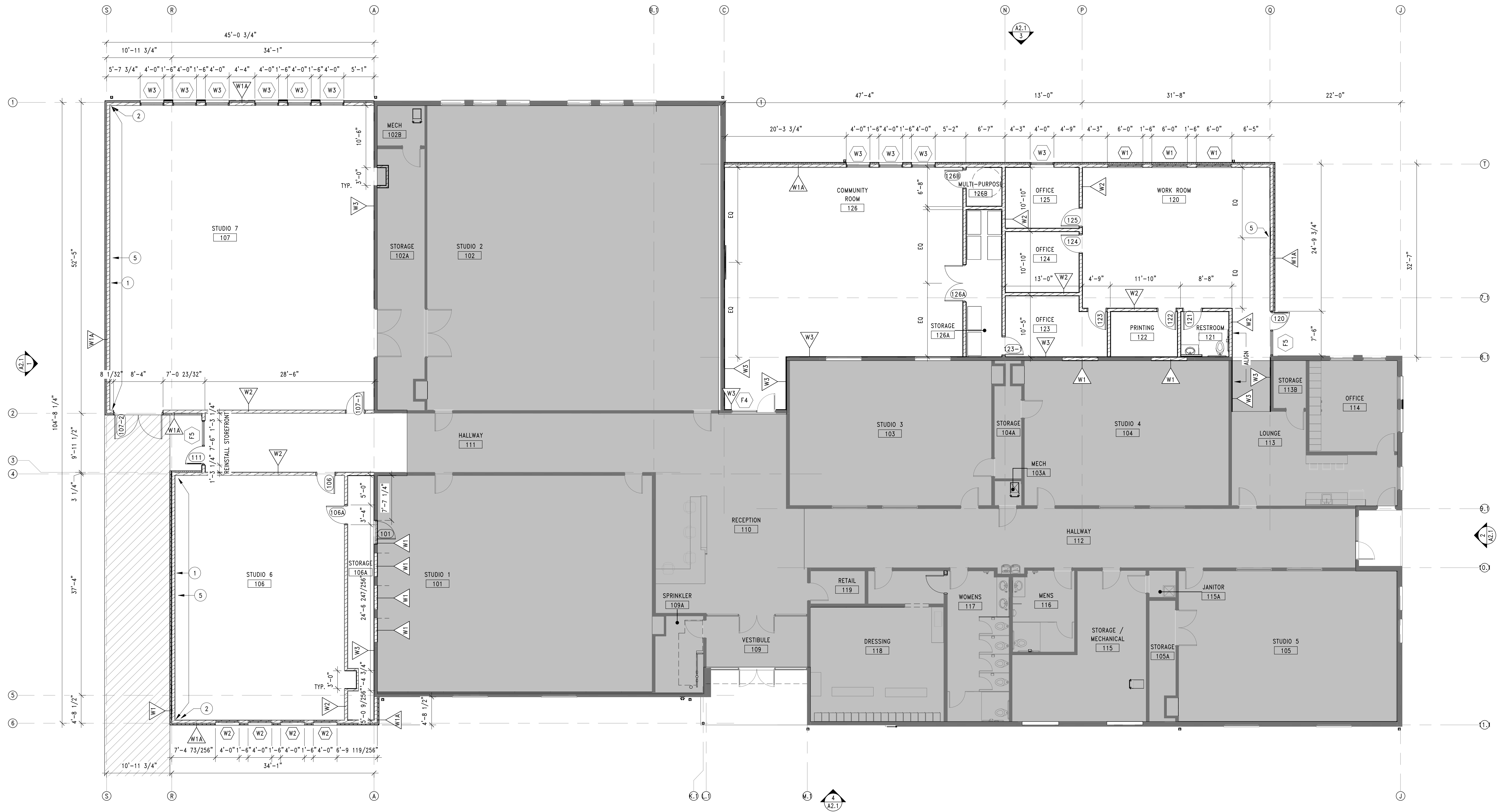


EXTERIOR ELEVATION KEYNOTE LEGEND

- 1 CMU - URBAN BRICK SMOOTH (TYPE 1): PROVIDE & INSTALL 3.5" X 2.25" X 15.625" BLOCK. PATTERN/Joint: RUNNING BOND, RAKED JOINT. EXPANSION/CONSTRUCTION JOINTS AS INDICATED BY (CJ). SEE SPECIFICATION & WALL TYPES. COLOR: OXENDEN
- 2 CMU - TEX-STONE (TYPE 2): PROVIDE & INSTALL 3.5" X 7.5" X 15.375" BLOCK. PATTERN/Joint: RUNNING BOND, RAKED JOINT. EXPANSION/CONSTRUCTION JOINTS AS INDICATED BY (CJ). SEE SPECIFICATION & WALL TYPES. COLOR: COLBY
- 3 FIBER CEMENT LAP SIDING: PROVIDE & INSTALL 5/16 X 6 1/4" FIBER CEMENT SIDING BY JAMES HARDIE (OR APPROVED EQUAL). PREFINISHED CORNER CLIPS AT EXTERIOR CORNERS. FLASHING AS REQUIRED BY MANUFACTURER, SEE DETAILS. TEXTURE: SMOOTH COLOR: PT1 - CEILING BRIGHT WHITE (SW7007)
- 4 FIBER CEMENT PANELS: PROVIDE & INSTALL 5/16 PANELS BY JAMES HARDIE (OR APPROVED EQUAL) OVER 1X4 TREATED WOOD FURRING MEMBERS. COLOR: PT3 - IRON ORE (SW7069)
- 5 STOREFRONT WINDOW SYSTEM: PROVIDE & INSTALL 2" X 4 1/2" THERMALLY-BROKEN ALUMINUM STOREFRONT BLACK ANODIZED FINISH, W/ 1" INSULATED GLAZING. (ARGON FILLED W/ LOW-e COATING) SEE WINDOW ELEVATIONS. SEE SPECIFICATION.
- 6 PREFINISHED METAL LOUVER: PROVIDE & INSTALL PREFINISHED METAL LOUVER, SEE MECHANICAL. COLOR: MATCH ADJACENT MATERIAL.
- 7 CONCRETE SLAB, STOOP, OR FOUNDATION: RADIUS-TROWEL ALL EXPOSED 90° EDGES PROVIDE SMOOTH FINISH ON VERTICAL SURFACES PROVIDE BROOM FINISH ON HORIZONTAL SURFACES SLOPE 1/4" PER FOOT MAXIMUM, 1/8" PER FOOT MINIMUM. SEE STRUCTURAL. SEE CIVIL.
- 8 BUILDING SIGNAGE: PROVIDE & INSTALL CUSTOM LOGO SIGNAGE, POWDER-COATED ALUMINUM FINISH ON 2" STANDOFFS. SIGNAGE STYLE AND LOGO TO BE CONFIRMED BY OWNER.
- 8A BUILDING SIGNAGE: PROVIDE & INSTALL CUSTOM LOGO SIGNAGE, BACK LIT, POWDER-COATED ALUMINUM FINISH ON 2" STANDOFFS. SIGNAGE STYLE AND LOGO TO BE CONFIRMED BY OWNER.
- 9 METAL GUTTER/DOWNSPOUTS: 5" FORMED RECTANGULAR GUTTER W/ 5" X 5" OPEN-FACED METAL DOWNSPOUT W/ KYNAR FINISH BY FIRESTONE ROOFING OR APPROVED EQUAL. SEE ROOF PLAN. ADAPTER TO CONNECT TO UNDERGROUND STORM PIPING. SEE CIVIL FOR MORE INFORMATION.
- 10 METAL FASCIA & ALUMINUM SOFFIT: PROVIDE & INSTALL PREFINISHED METAL FASCIA, PREFINISHED ALUMINUM SOFFIT, METAL TRIM AND ACCESSORIES. COLOR AS SELECTED BY ARCHITECT. SEE SPECIFICATIONS, SECTIONS & DETAILS.
- 11 GALVANIZED TUBE STEEL COLUMNS: PROVIDE & INSTALL NEW HOT-DIPPED GALVANIZED COLUMNS, HIGH-PERFORMANCE COATED. COLUMNS TO BE CAPPED AND WATER-TIGHT. GRIND SMOOTH, TYPICAL. SEE STRUCTURAL, SECTIONS AND DETAILS.
- 12 ROOF MEMBRANE: SEE ROOF PLAN, SPECIFICATIONS AND DETAILS.
- 13 STANDING SEAM METAL ROOFING: SEE ROOF PLAN, SPECIFICATIONS AND DETAILS.
- 14 CONDENSERS: CONDENSERS SITTING ON PAD. SEE MECHANICAL FOR CONDENSER INFORMATION.
- 15 ROOF PENETRATION: SEE MECHANICAL

EXTERIOR ELEVATIONS - GENERAL NOTES:

- 1. DIMENSIONS SHOWN ARE BASED ON ACTUAL WALL THICKNESS IN CORRESPONDENCE WITH FLOOR PLANS. SEE WALL TYPES AND DETAILS FOR FURTHER INFORMATION.
 - 2. EXTERIOR AND INTERIOR DIMENSIONS ARE FROM FACE OF FRAMING, OR GRIDLINES, TYP.
 - 3. DIMENSIONS AT WINDOWS AND DOORS ARE SHOWN AS ROUGH OPENING DIMENSIONS. CONTRACTOR SHALL COORDINATE ACTUAL ROUGH OPENINGS WITH THE DOOR, WINDOW, AND SIDING MANUFACTURER'S REQUIREMENTS PRIOR TO ORDER AND INSTALLATION.
 - 5. CONTRACTOR SHALL PROVIDE BACK RODS & SEALANT AROUND THE PERIMETER OF ALL PENETRATIONS AND OPENINGS, TYPICAL.
 - 6. CONTRACTOR SHALL PROVIDE VERTICAL CONTROL JOINTS AT 36"-0" O.C. (MAXIMUM) IN CMU AT WALLS OVER 24'-0" LONG AND AT BOTH SIDES OF ALL DOOR, WINDOW, DUCT AND OTHER OPENINGS LARGER THAN 4 SQUARE FEET. SEE EXTERIOR ELEVATIONS, EXACT LOCATION TO BE COORDINATED WITH THE ARCHITECT.
 - 7. ALL HORIZONTAL MASONRY REINFORCING, INSULATION, THRU-WALL FLASHING, AND WEATHER BARRIERS SHALL BE DISCONTINUOUS ACROSS ALL VERTICAL CONTROL JOINTS. PROVIDE BACKER RODS & SEALANT AT EXTERIOR FACES.
 - 8. PROVIDE LINTELS AT MASONRY OPENINGS GREATER THAN 1'-4" TYPICAL. SEE STRUCTURAL.
 - 9. AT MASONRY VENEER WALLS, THE FINISHED FACE SHALL WRAP ALL CORNERS AND BE PROVIDED ON ALL VISIBLE FACES OF PLASTERS, INSETS, WING WALLS, AND RETURNS. NO UNFINISHED FACES SHALL BE EXPOSED TO VIEW.
 - 10. PROVIDE DRIP CAPS AT ALL WINDOW AND DOOR HEADS.
 - 11. PROVIDE FLASHING AS REQUIRED TO PREVENT THE PENETRATION OF WATER THROUGH THE EXTERIOR SHELL OF THE BUILDING.
- DEFINITIONS:
T.O. - TOP OF
P.J. - PANEL JOINT
C.J. - CONTROL JOINT



1 FLOOR PLAN - SITE PLAN SUBMITTAL
1/8" = 1'-0"

THESE DRAWINGS ARE THE PROPERTY OF
PROFESSIONAL SERVICE AND SHALL
NOT BE REPRODUCED OR TRANSMITTED
IN ANY FORM OR BY ANY MEANS,
ELECTRONIC OR MECHANICAL, WITHOUT
THE WRITTEN PERMISSION OF THE
AUTHOR. ANY OTHER LOCATIONS WITHOUT
THE WRITTEN PERMISSION OF THE
AUTHOR ARE UNAUTHORIZED.
REPRODUCTION IS PROHIBITED.

STUDIO MELEE
139 4TH STREET
WEST DES MOINES, IOWA 50265

PREMIERE DANCE ADDITION
COMMERCIAL
BUILDING

870 NE DOUGLAS PARKWAY
WAUKEE, IA 50263

PRINT DATE:
01/19/26
SHEET NAME:
OVERALL BUILDING PLAN

A1.0

PRELIMINARY - NOT FOR CONSTRUCTION