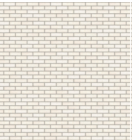

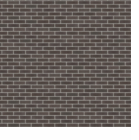

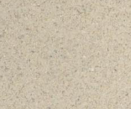
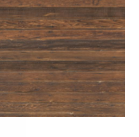


EXTERIOR MATERIALS LEGEND

 BRICK A: MODULAR FULL DEPTH MANUFACTURER: INTERSTATE BRICK COLOR: ASH	 STUCCO: A MANUFACTURER: DRYVIT COLOR: MATCH SW 7532 URBAN PUTTY	MORTAR FOR BRICK A MANUFACTURER: SPEC MIX COLOR: PRISM P2620 CAMEL
 BRICK B: MODULAR FULL DEPTH MANUFACTURER: ENDICOTT COLOR: MANGANESE BROWN VELOUR	 STUCCO: B MANUFACTURER: DRYVIT COLOR: MATCH SW 7675 SEALSKIN	MORTAR FOR BRICK B MANUFACTURER: SOLOMON & COLOR COLOR: SGC 85A DK CHOCOLATE
 CAST STONE: 4" DEPTH MANUFACTURER: COLOR:	 COMPOSITE DECKING BOARD: MANUFACTURER: TREX COLOR: SELECT SADDLE	

KEYNOTE LEGEND

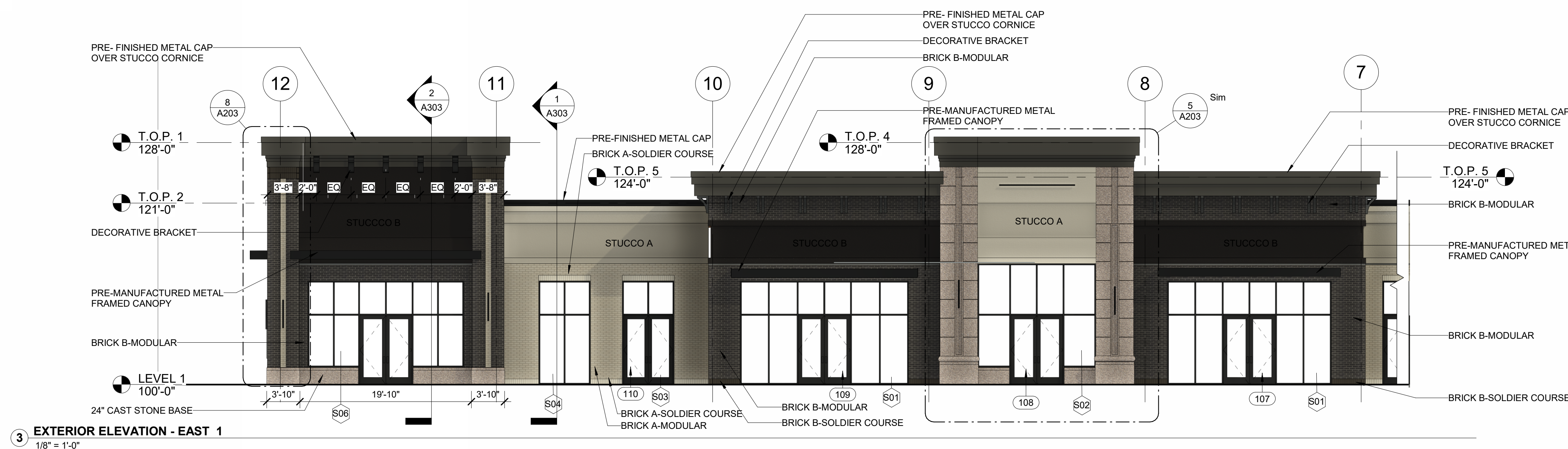
KEY	NOTE
02	BRICK A-MODULAR
03	BRICK B-MODULAR
05	BRICK A-SOLDIER COURSE
06	BRICK B-SOLDIER COURSE
09	24" CAST STONE BASE
10	32" CAST STONE BASE
17	PRE-MANUFACTURED METAL FRAMED CANOPY
18	ALUMINUM STOREFRONT SYSTEM W/ INSULATED GLAZING
19	PRE-FINISHED METAL CAP
22	PRE-FINISHED METAL CAP OVER STUCCO CORNICE
23	DECORATIVE BRACKET
32	STUCCO A
33	STUCCO B

ELEVATION GENERAL NOTES

1. ARCHITECTURAL 100'-0" = SURVEY xxx & xxx - SEE CIVIL
2. DO NOT SCALE DRAWINGS. DRAWN DIMENSIONS SHALL TAKE PRECEDENCE. NOTIFY THE ARCHITECT OF ANY DISCREPANCIES IMMEDIATELY.
3. REFER TO DOOR AND WINDOW SCHEDULES FOR MORE INFORMATION.
4. SEE CIVIL DRAWINGS FOR DRAINAGE REQUIREMENTS.
5. GRADE SOIL AWAY FROM BUILDING TO DRAIN. SEE CIVIL AND LANDSCAPE DRAWINGS FOR MORE INFORMATION.
6. EXTERIOR LIGHTING FIXTURE ARE SHOWN FOR REFERENCE. CONTRACTOR TO COORDINATE POWER WITH ELECTRICAL ENGINEER AND QUANTITIES WITH VENDOR.
7. EXTERIOR SIGNAGE IS SHOWN FOR REFERENCE ONLY. CONTRACTOR SHALL COORDINATE SIGNAGE WITH EACH INDIVIDUAL TENANT AND APPLY FOR SIGNAGE PERMIT ON EACH INSTANCE.

BUILDING MATERIAL BREAKDOWN SCHEDULE

ELEVATION	MASONRY	%	STUCCO	%	GLAZING/DOOR	%	TOTAL WALL S.F.
NORTH	1,190 S.F.	51.2	751 S.F.	32.3	384 S.F.	16.5	2,325 S.F.
EAST	2,148 S.F.	34.9	2,337 S.F.	37.9	1,679 S.F.	27.2	6,164 S.F.
SOUTH	1,265 S.F.	68.3	333 S.F.	18	255 S.F.	13.7	1,853 S.F.
WEST	2,574 S.F.	41.4	2,337 S.F.	37.6	1,302 S.F.	21	6,213 S.F.
BLDG TOTAL	7,177 S.F.	43.3	5,758 S.F.	34.8	3,620 S.F.	21.9	16,555 S.F.



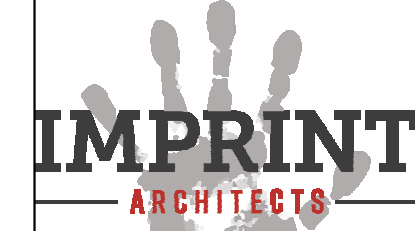
PRELIMINARY - NOT FOR CONSTRUCTION

PROJECT: **KETTLESTONE LAKES COMMERCIAL PHASE 2**
3150 GRAND PRAIRIE PARKWAY
WAUKEE, IA

DATE:	DRAWN BY:	CHKD BY:
01-15-26	CR	JW
REVISED:		

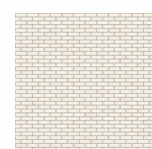

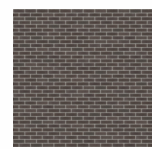



EXTERIOR ELEVATIONS

A201



617 SW 3RD ST., STE 108
ANKENY, IOWA 50023
PHONE: (515) 965-5336
FAX: (515) 965-5335
info@imprintarchitects.com

EXTERIOR MATERIALS LEGEND

	BRICK A: MODULAR FULL DEPTH MANUFACTURER: INTERSTATE BRICK COLOR: ASH		STUCCO: A MANUFACTURER: DRYVIT COLOR: MATCH SW 7532 URBAN PUTTY	MORTAR FOR BRICK A MANUFACTURER: SPEC MIX COLOR: PRISM P2620 CAMEL
	BRICK B: MODULAR FULL DEPTH MANUFACTURER: ENDICOTT COLOR: MANGANESE BROWN VELOUR		STUCCO: B MANUFACTURER: DRYVIT COLOR: MATCH SW 7675 SEALSKIN	MORTAR FOR BRICK B MANUFACTURER: SOLOMON & COLOR COLOR: SGC 85A DK CHOCOLATE
	CAST STONE: 4" DEPTH MANUFACTURER: COLOR:		COMPOSITE DECKING BOARD: MANUFACTURER: TREX COLOR: SELECT SADDLE	

KEYNOTE LEGEND

KEY	NOTE
02	BRICK A-MODULAR
03	BRICK B-MODULAR
05	BRICK A-SOLDIER COURSE
06	BRICK B-SOLDIER COURSE
09	24" CAST STONE BASE
10	32" CAST STONE BASE
17	PRE-MANUFACTURED METAL FRAMED CANOPY
19	PRE-FINISHED METAL CAP
22	PRE-FINISHED METAL CAP OVER STUCCO CORNICE
23	DECORATIVE BRACKET
29	OVERFLOW DRAIN DOWNSPOUT NOZZLE
32	STUCCO A
33	STUCCO B
35	BRICK B-SOLDIER SILL

ELEVATION GENERAL NOTES

1. ARCHITECTURAL 100' - 0" = SURVEY xxx & xxx - SEE CIVIL
2. DO NOT SCALE DRAWINGS. DRAWN DIMENSIONS SHALL TAKE PRECEDENCE. NOTIFY THE ARCHITECT OF ANY DISCREPANCIES IMMEDIATELY.
3. REFER TO DOOR AND WINDOW SCHEDULES FOR MORE INFORMATION.
4. SEE CIVIL DRAWINGS FOR DRAINAGE REQUIREMENTS.
5. GRADE SOIL AWAY FROM BUILDING TO DRAIN. SEE CIVIL AND LANDSCAPE DRAWINGS FOR MORE INFORMATION.
6. EXTERIOR LIGHTING FIXTURE ARE SHOWN FOR REFERENCE. CONTRACTOR TO COORDINATE POWER WITH ELECTRICAL ENGINEER AND QUANTITIES WITH VENDOR.
7. EXTERIOR SIGNAGE IS SHOWN FOR REFERENCE ONLY. CONTRACTOR SHALL COORDINATE SIGNAGE WITH EACH INDIVIDUAL TENANT AND APPLY FOR SIGNAGE PERMIT ON EACH INSTANCE.



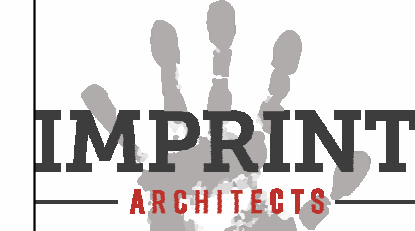
PRELIMINARY - NOT FOR CONSTRUCTION

PROJECT:
KETTLESTONE LAKES COMMERCIAL PHASE 2
3150 GRAND PRAIRIE PARKWAY
WAUKEE, IA

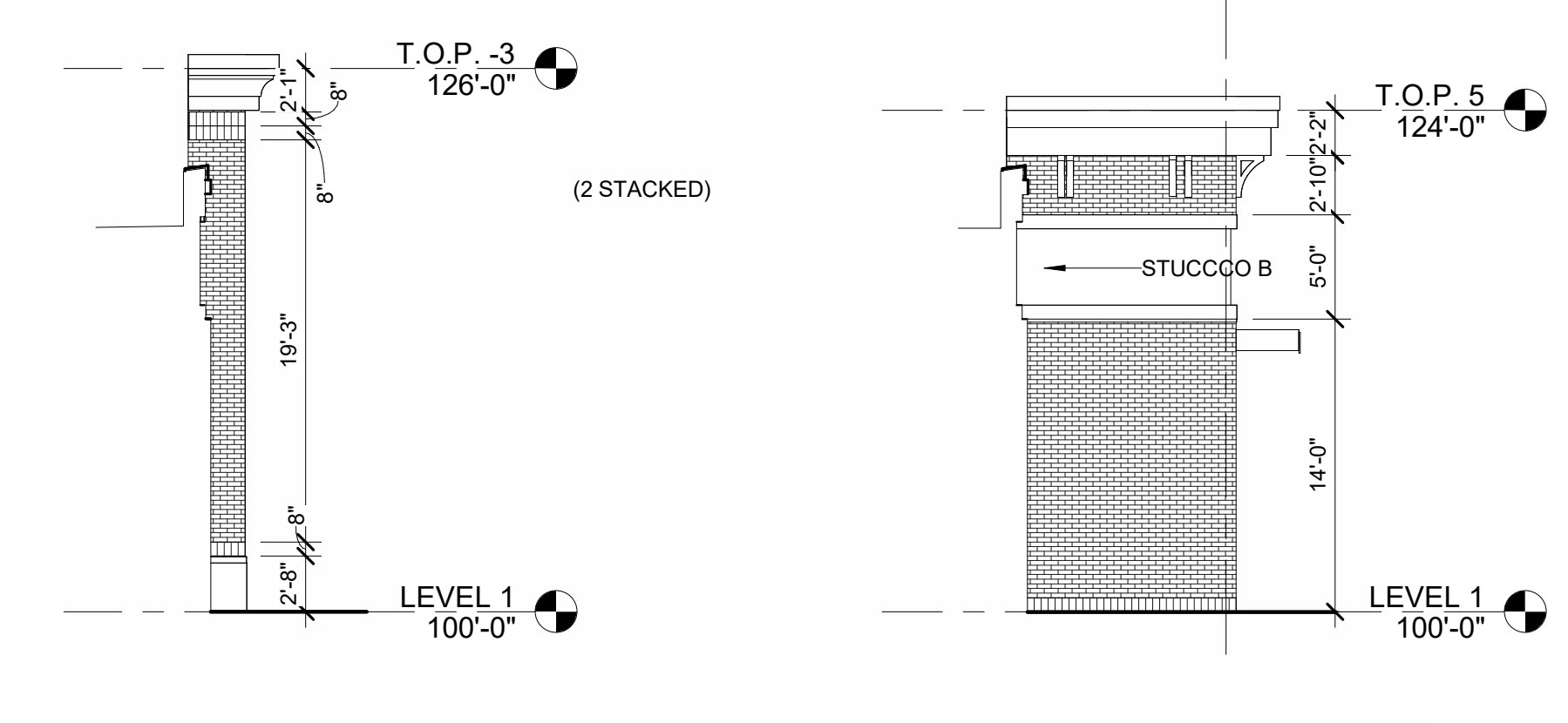
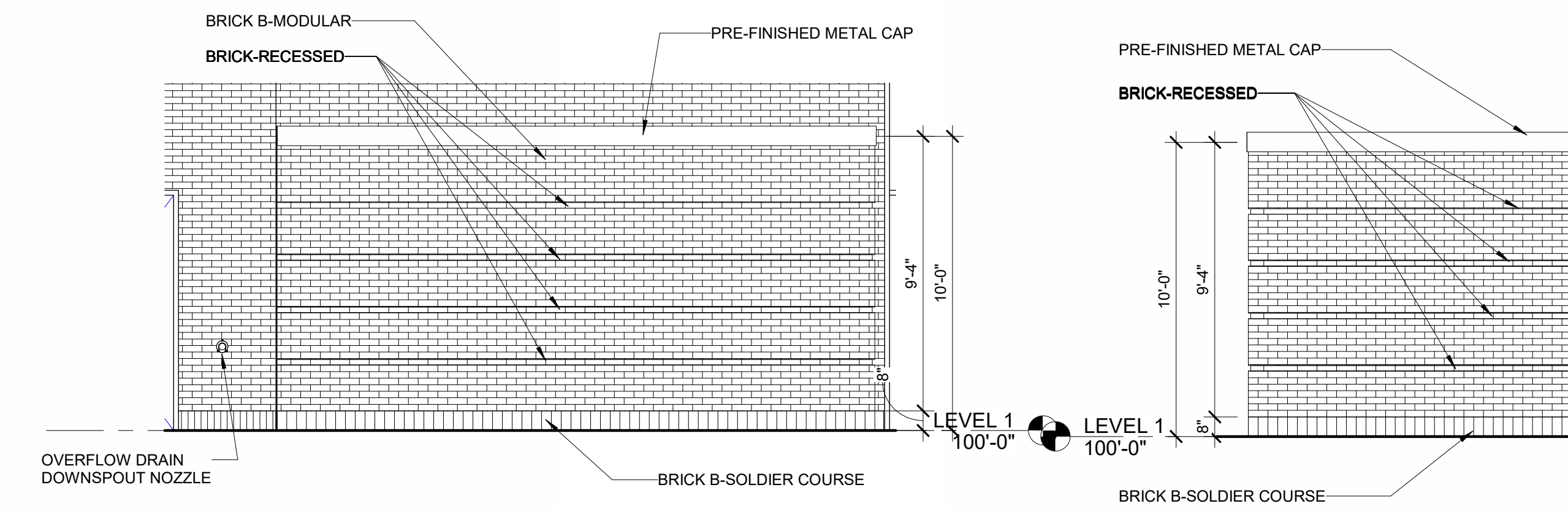
DATE:	DRAWN BY:	CHKD BY:
01-15-26	CR	JW
REVISED:		

EXTERIOR ELEVATIONS

A202

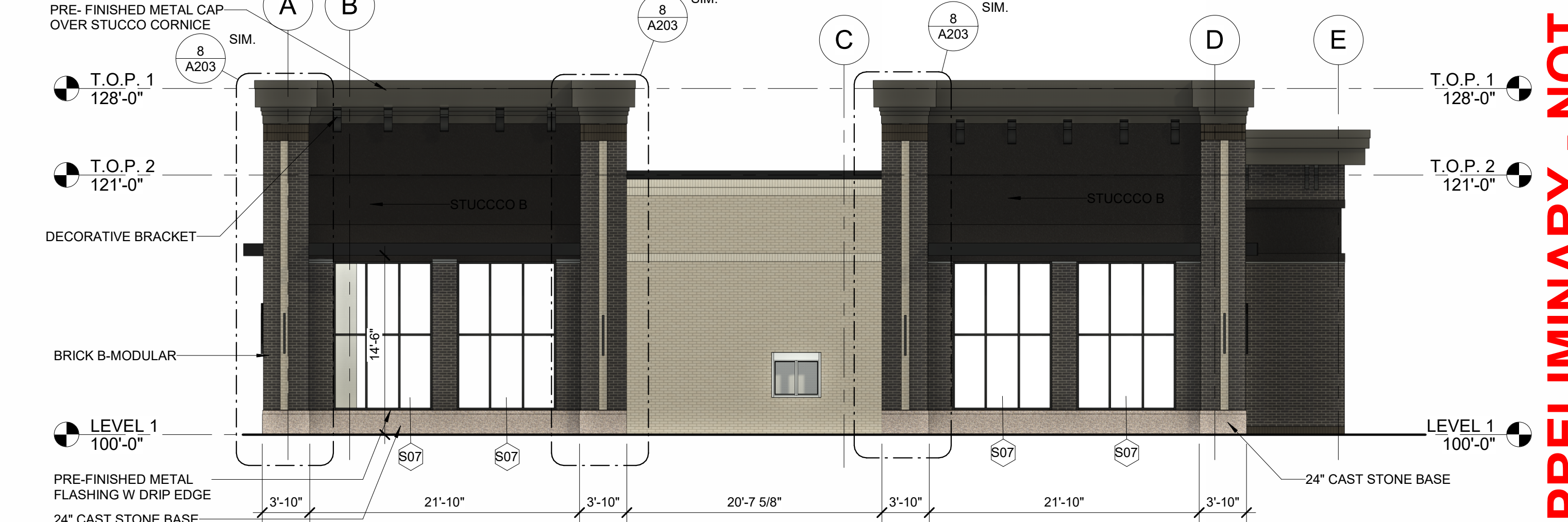
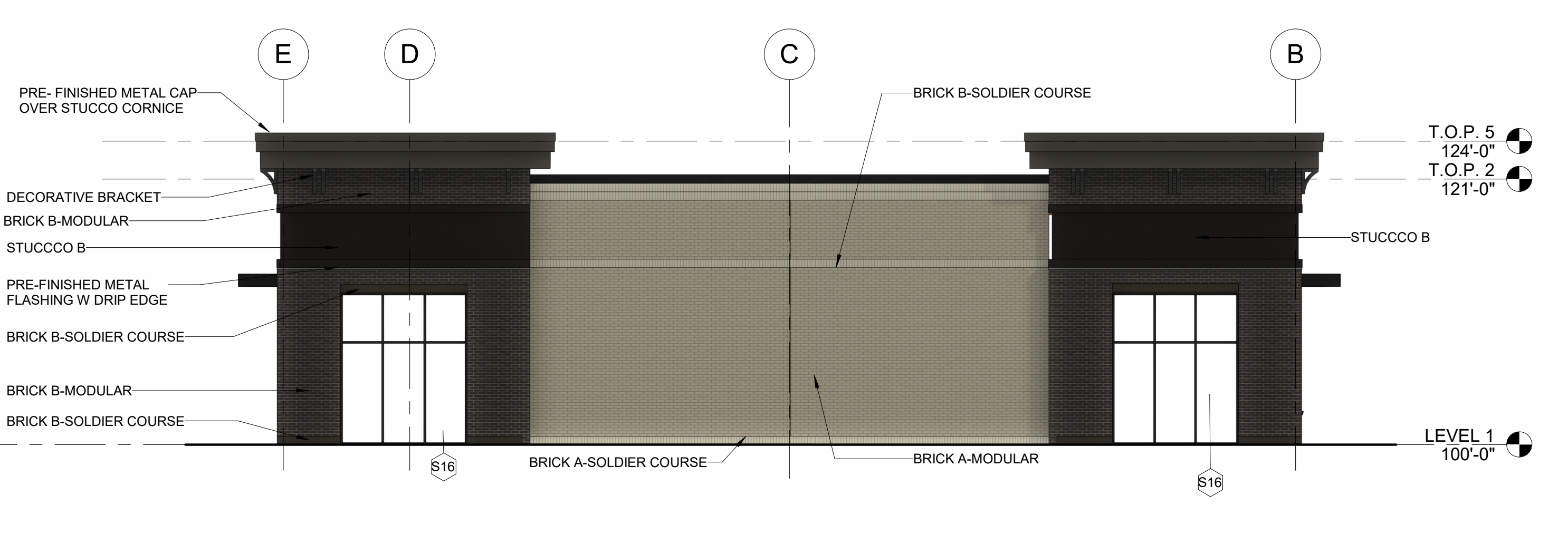
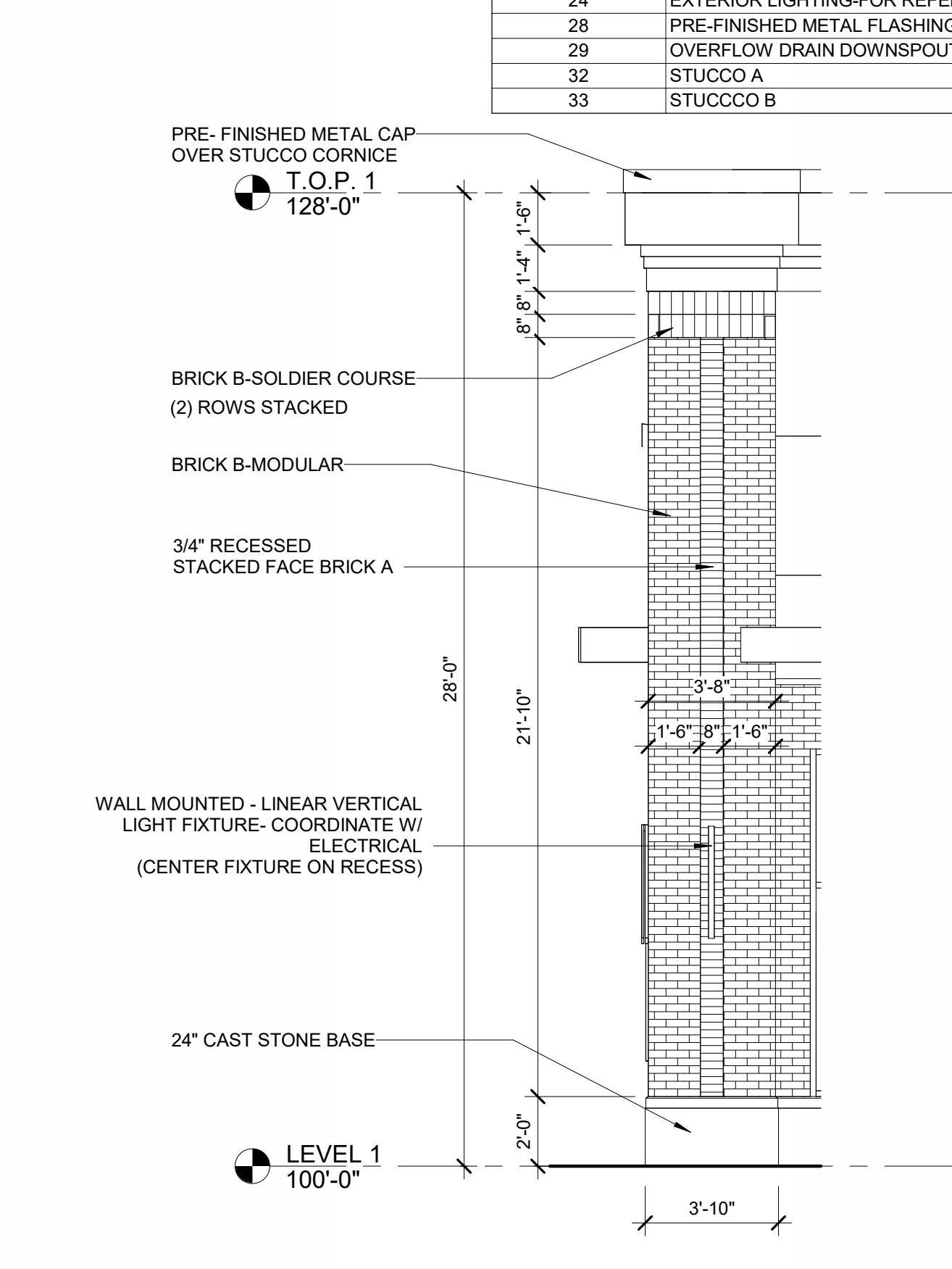
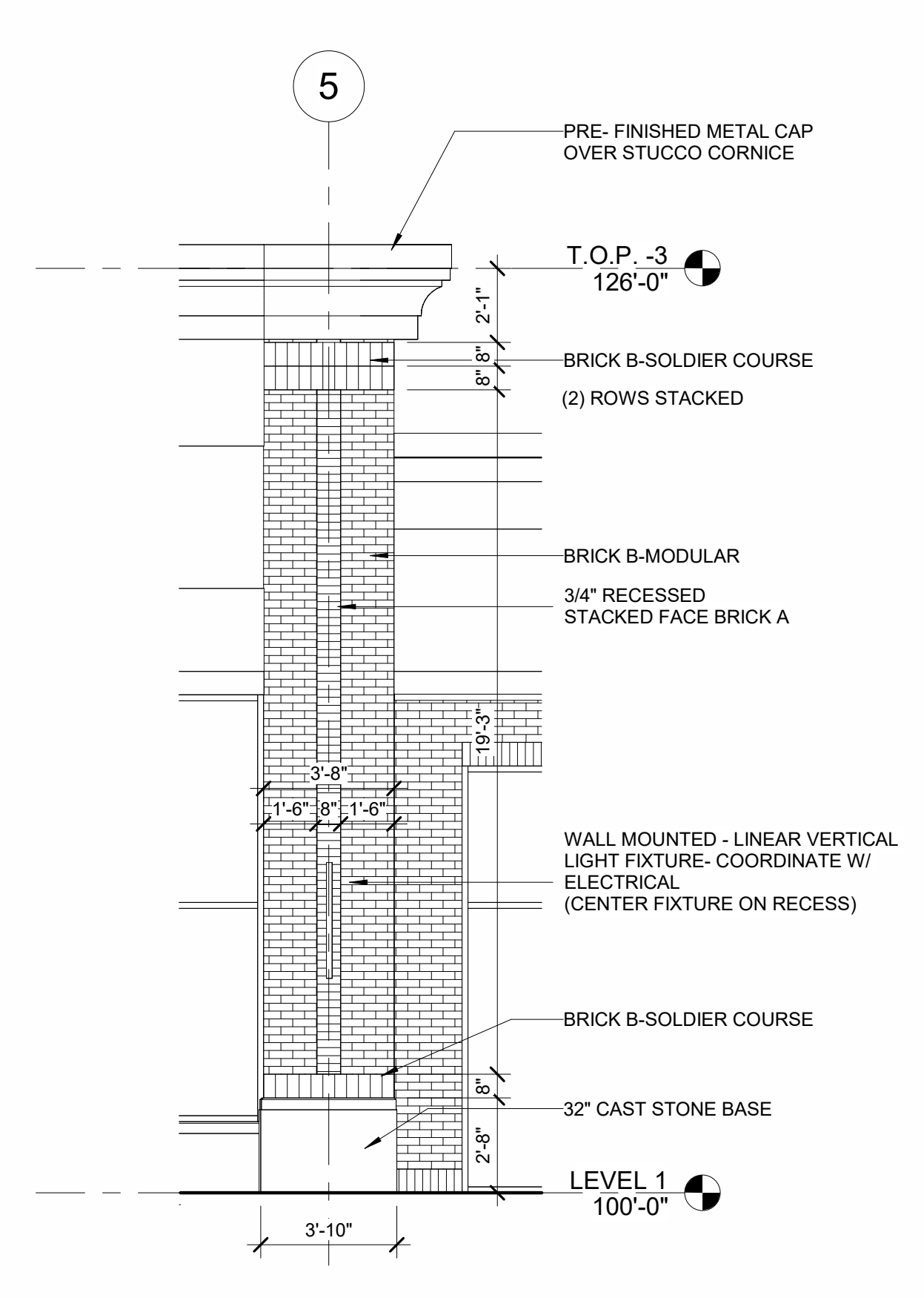
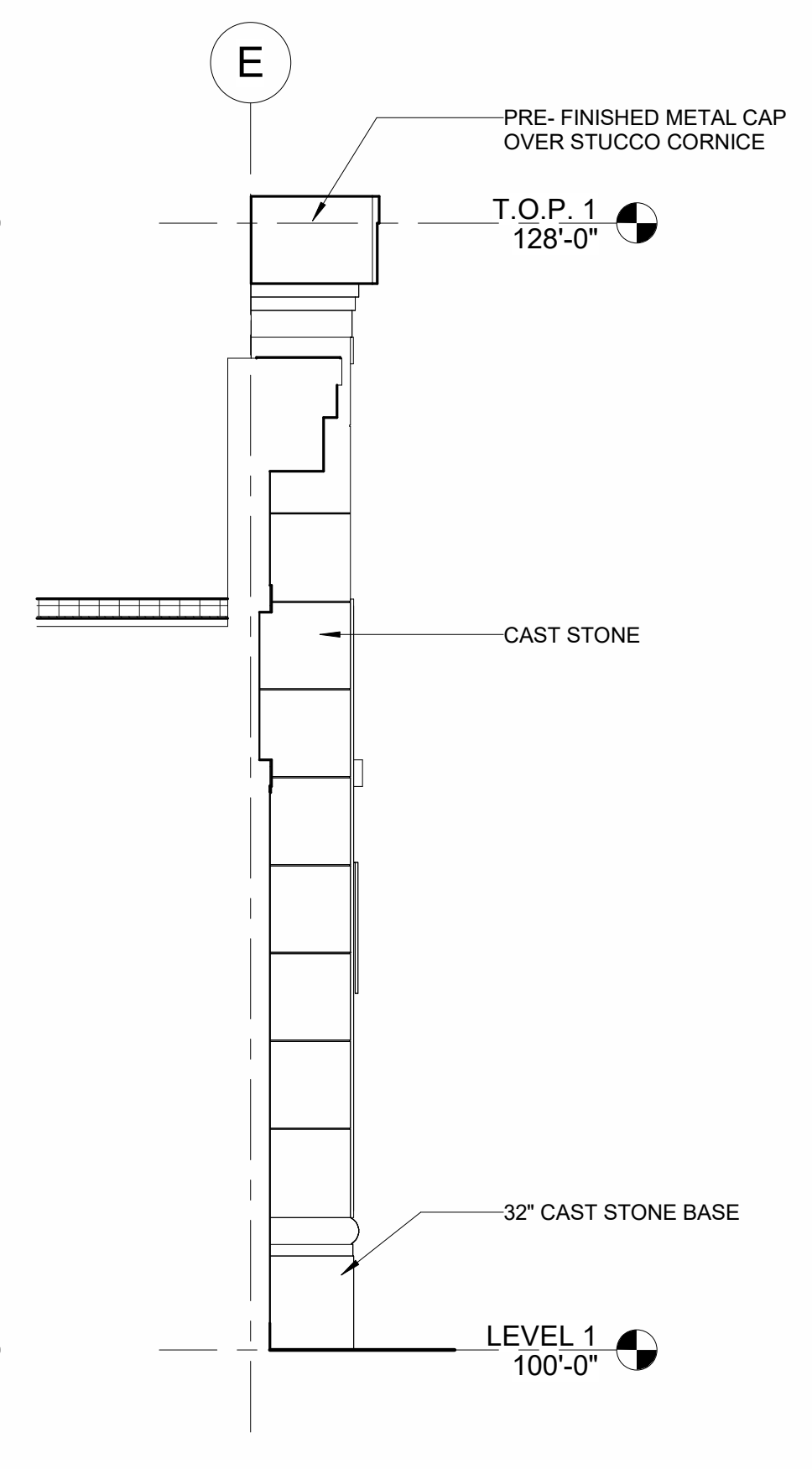
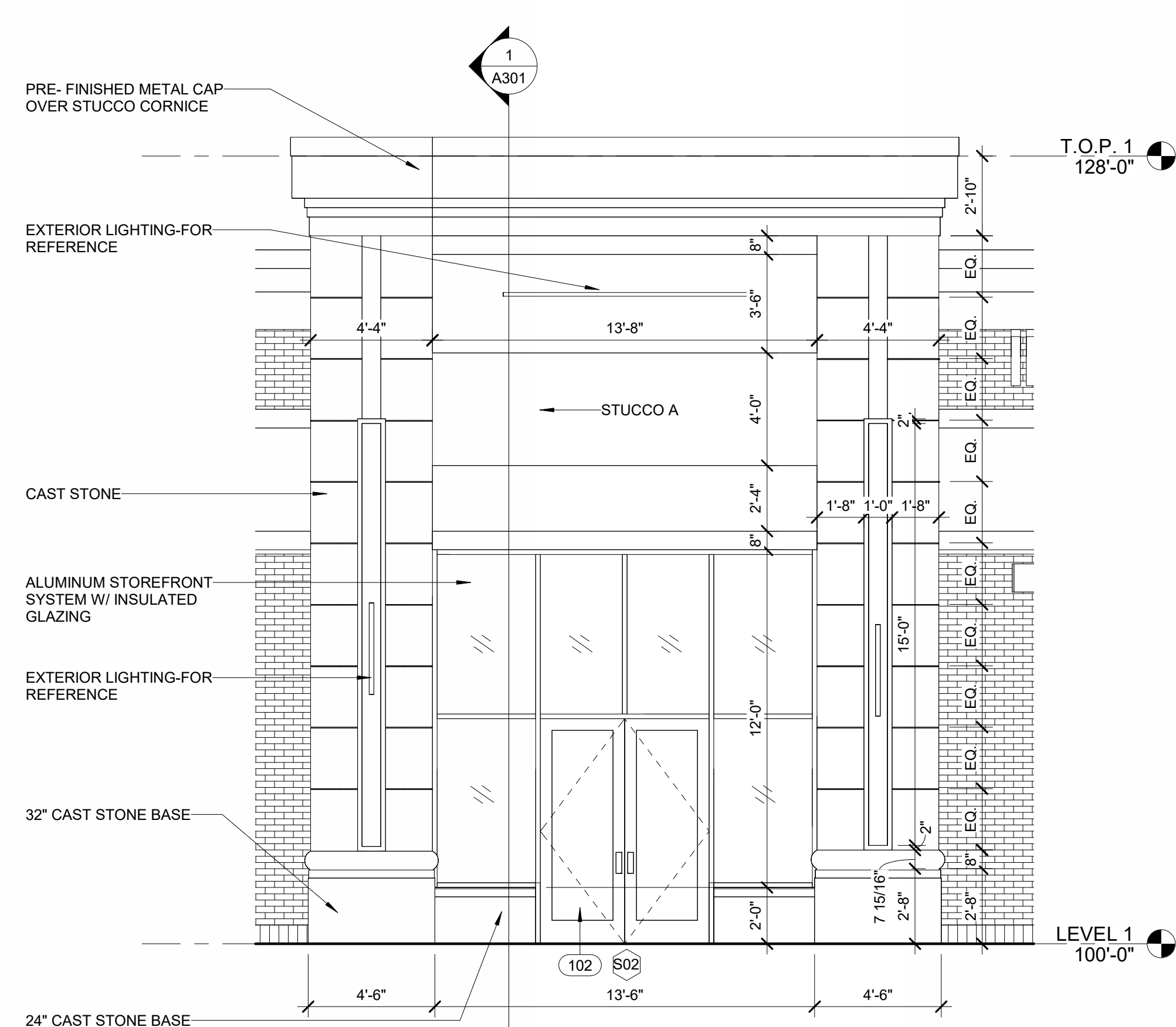


617 SW 3RD ST., STE 108
ANKENY, IOWA 50023
PHONE: (515) 965-5336
FAX: (515) 965-5335
info@imprintarchitects.com



- ELEVATION GENERAL NOTES
1. ARCHITECTURAL 100'-0" = SURVEY xxx & xxx - SEE CIVIL
 2. DO NOT SCALE DRAWINGS. DRAWN DIMENSIONS SHALL TAKE PRECEDENCE. NOTIFY THE ARCHITECT OF ANY DISCREPANCIES IMMEDIATELY.
 3. REFER TO DOOR AND WINDOW SCHEDULES FOR MORE INFORMATION.
 4. SEE CIVIL DRAWINGS FOR DRAINAGE REQUIREMENTS.
 5. GRADE SOIL AWAY FROM BUILDING TO DRAIN. SEE CIVIL AND LANDSCAPE DRAWINGS FOR MORE INFORMATION.
 6. EXTERIOR LIGHTING FIXTURE ARE SHOWN FOR REFERENCE. CONTRACTOR TO COORDINATE POWER WITH ELECTRICAL ENGINEER AND QUANTITIES WITH VENDOR.
 7. EXTERIOR SIGNAGE IS SHOWN FOR REFERENCE ONLY. CONTRACTOR SHALL COORDINATE SIGNAGE WITH EACH INDIVIDUAL TENANT AND APPLY FOR SIGNAGE PERMIT ON EACH INSTANCE.

KEYNOTE LEGEND	
KEY	NOTE
02	BRICK A-MODULAR
03	BRICK B-MODULAR
05	BRICK A-SOLDIER COURSE
06	BRICK B-SOLDIER COURSE
08	BRICK-RECESSED
09	24" CAST STONE BASE
10	32" CAST STONE BASE
11	CAST STONE
18	ALUMINUM STOREFRONT SYSTEM W/ INSULATED GLAZING
19	PRE-FINISHED METAL CAP
22	PRE-FINISHED METAL CAP OVER STUCCO CORNICE
23	DECORATIVE BRACKET
24	EXTERIOR LIGHTING-FOR REFERENCE
28	PRE-FINISHED METAL FLASHING W DRIP EDGE
29	OVERFLOW DRAIN DOWNSPOUT NOZZLE
32	STUCCO A
33	STUCCO B



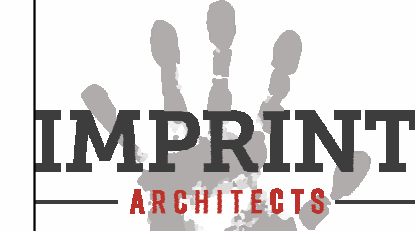
PRELIMINARY - NOT FOR CONSTRUCTION

PROJECT:
KETTLESTONE LAKES COMMERCIAL PHASE 2
3150 GRAND PRAIRIE PARKWAY
WAUKEE, IA

DATE:	DRAWN BY:	CHKD BY:
01-15-26	CR	JW
REVISED:		

ENLARGED EXTERIOR ELEVATIONS

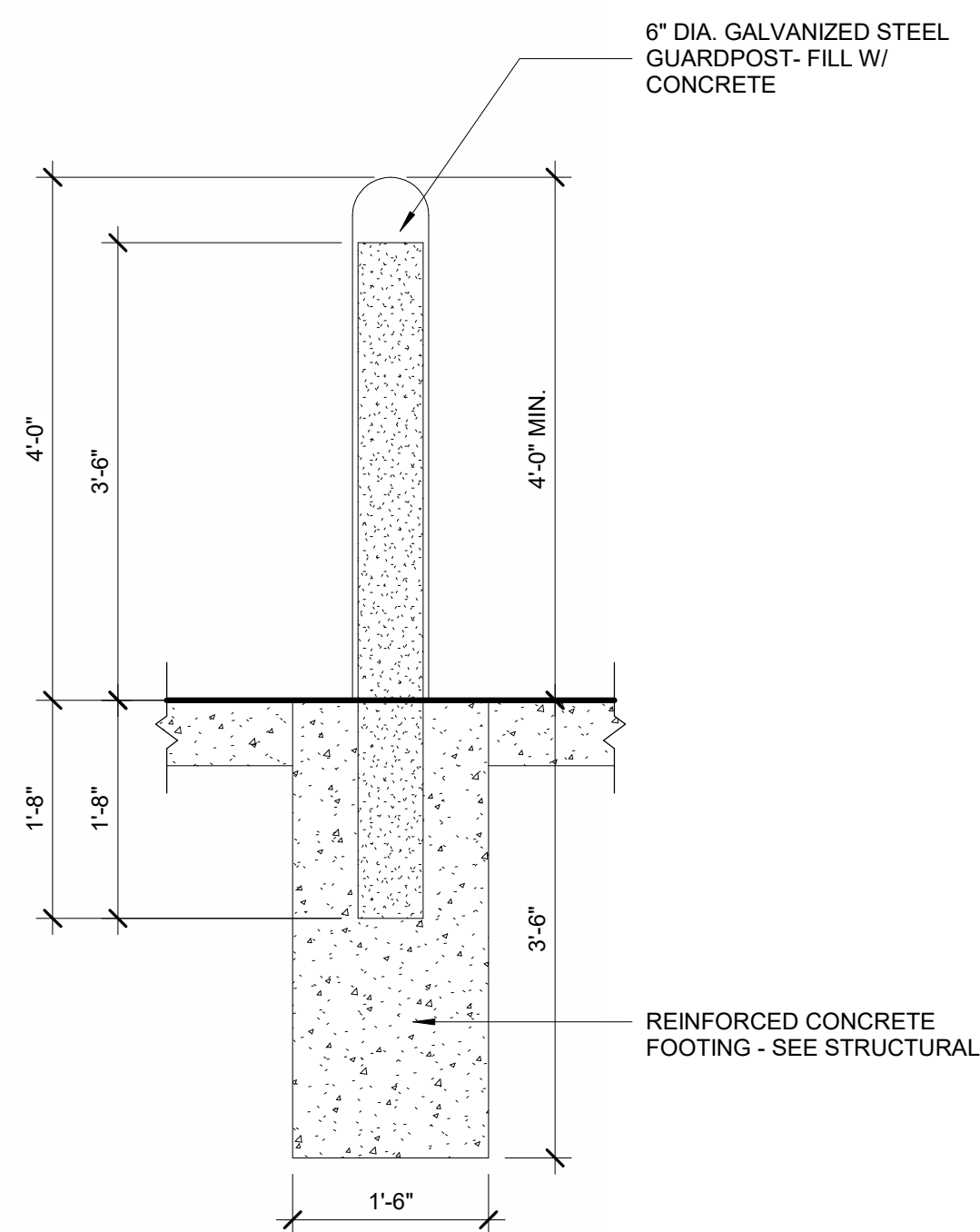
A203



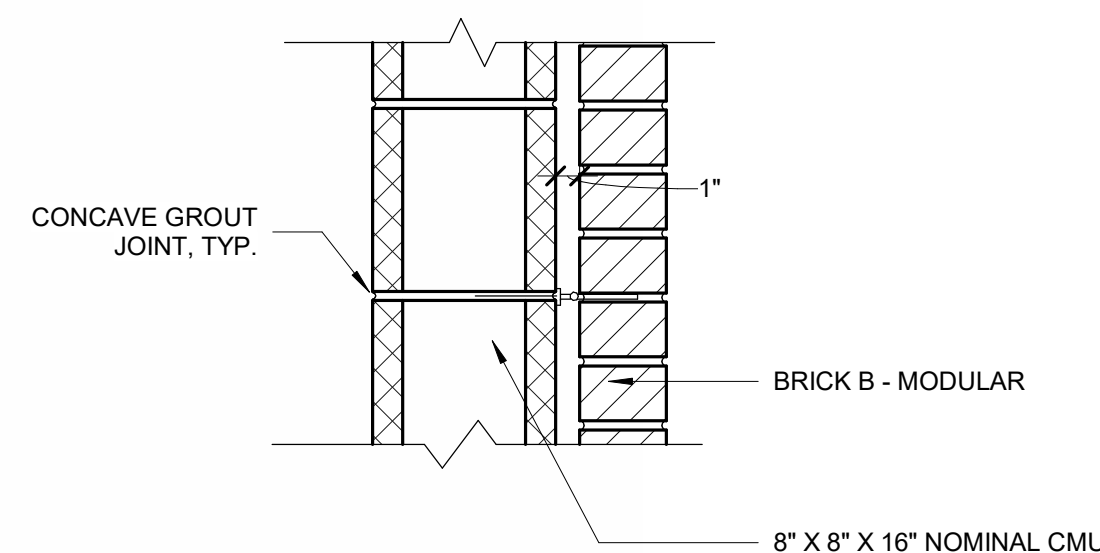
617 SW 3RD ST., STE 108
ANKENY, IOWA 50023
PHONE: (515) 965-5336
FAX: (515) 965-5335
info@imprintarchitects.com

1/22/2026 10:24:49 AM C:\Users\crodriguez\OneDrive - Imprint Architects\Documents\25-188-Kettlestone Lake Commercial Phase 2_cristina4YCKA.rvt

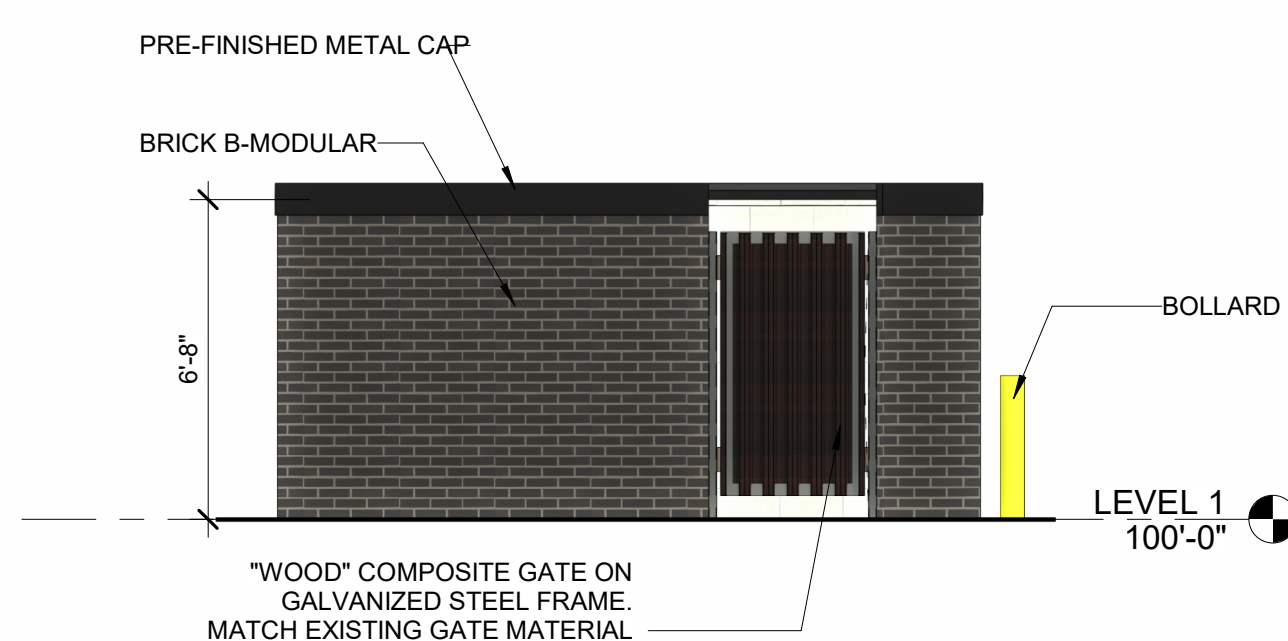
KEYNOTE LEGEND	
KEY	NOTE
03	BRICK B-MODULAR
13	BOLLARD
19	PRE-FINISHED METAL CAP



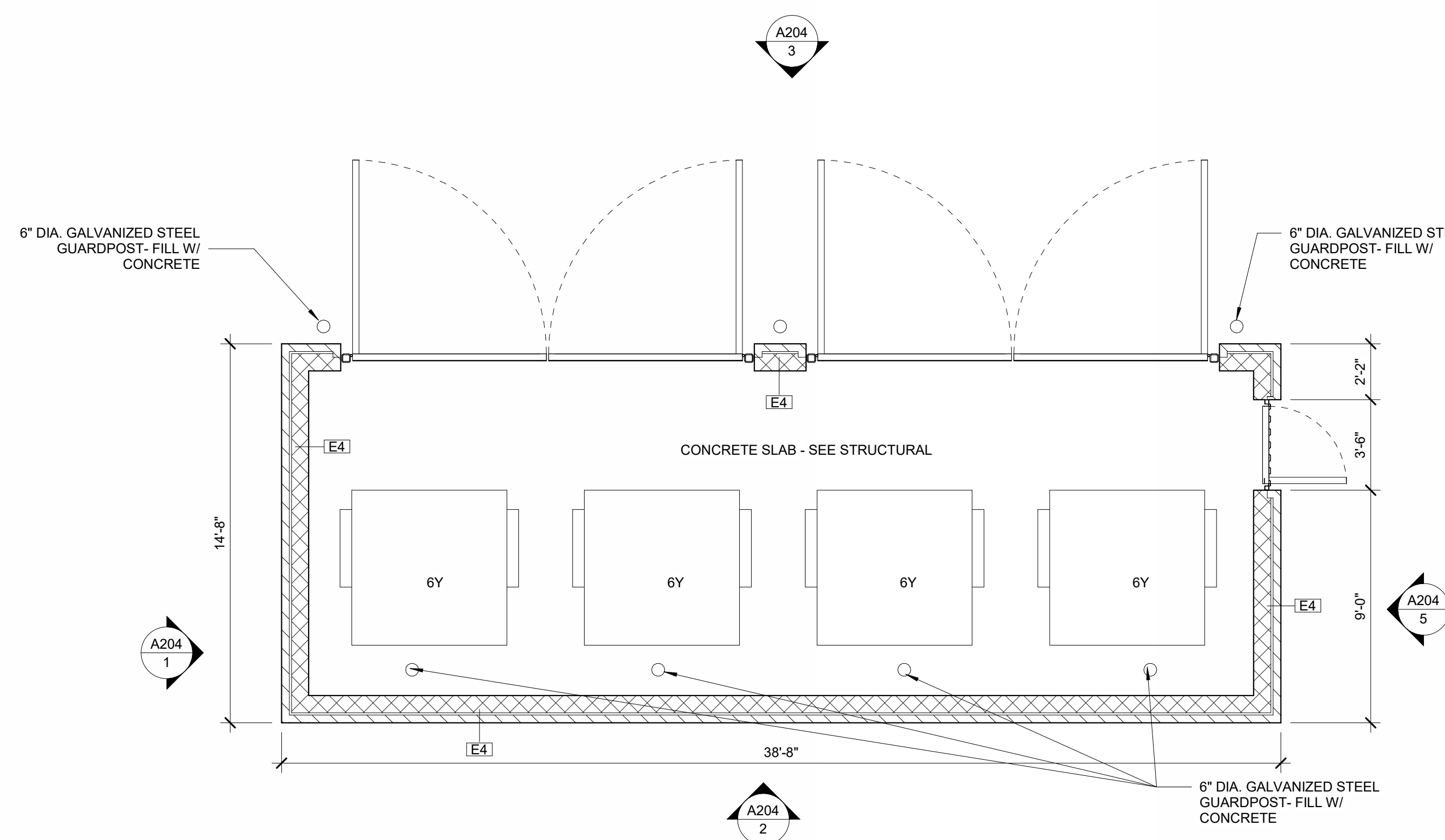
7 TYP. BOLLARD DETAIL
3/4" = 1'-0"



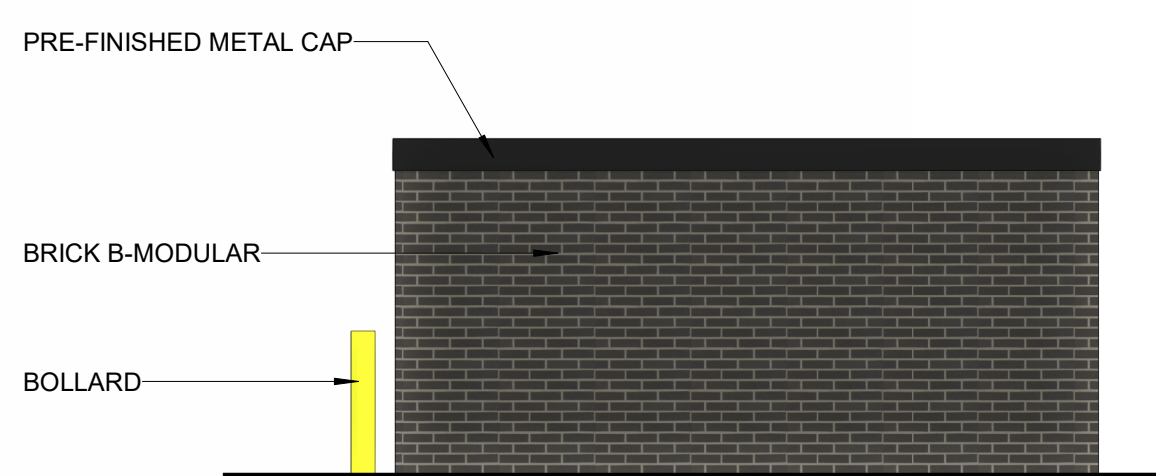
4 TRASH ENCLOSURE OR EXTERIOR METER WALL
1 1/2" = 1'-0"



5 EXTERIOR ELEVATION - TRASH ENCLOSURE OPENING
1/4" = 1'-0"



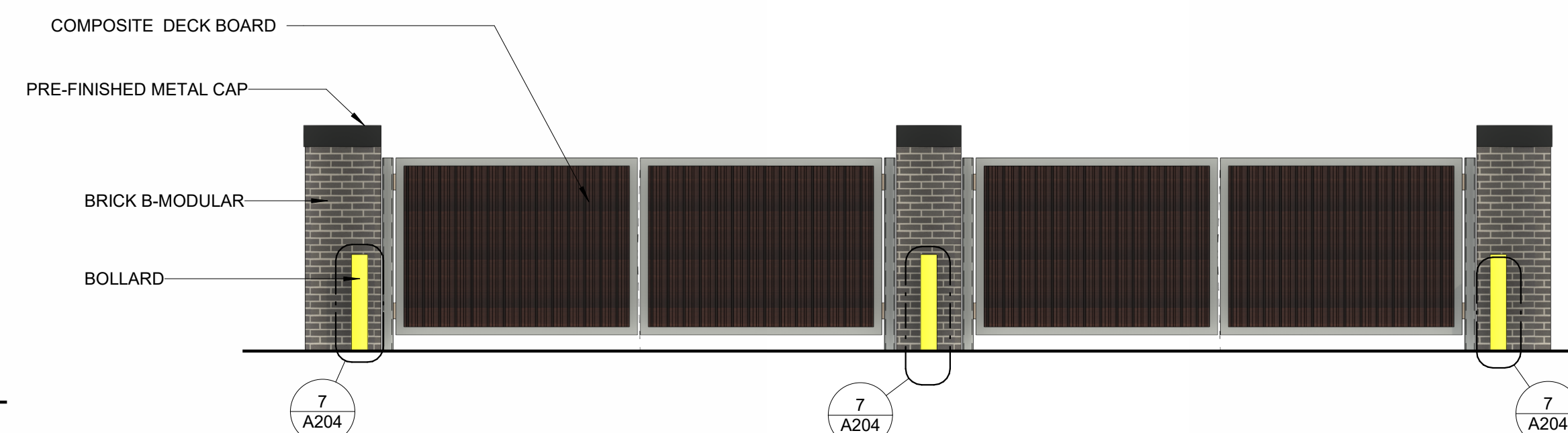
6 FLOOR PLAN - TRASH ENCLOSURE
1/4" = 1'-0"



1 EXTERIOR ELEVATION - SIDE
1/4" = 1'-0"



2 EXTERIOR ELEVATION - BACK OF TRASH ENCLOSURE
1/4" = 1'-0"



3 EXTERIOR ELEVATION - TRASH ENCLOSURE GATES
1/4" = 1'-0"

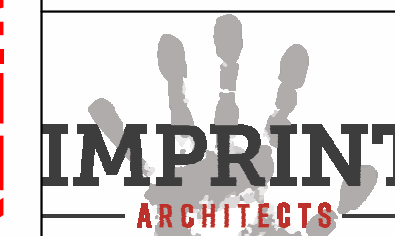
PRELIMINARY - NOT FOR CONSTRUCTION

PROJECT:
KETTLESTONE LAKES COMMERCIAL PHASE 2
3150 GRAND PRAIRIE PARKWAY
WAUKEE, IA

DATE: 01-15-26
DRAWN BY: CR
CHKD BY: JW
REVISID:

TRASH ENCLOSURE

A204



617 SW 3RD ST., STE 108
ANKENY, IOWA 50023
PHONE: (515) 965-5336
FAX: (515) 965-5335
info@imprintarchitects.com

PRELIMINARY - NOT FOR CONSTRUCTION

FLOOR PLAN

A101



617 SW 3RD ST., STE 108
 ANKENY, IOWA 50023
 PHONE: (515) 965-5336
 FAX: (515) 965-5335
 info@imprintarchitects.com

FLOOR PLAN GENERAL NOTE:

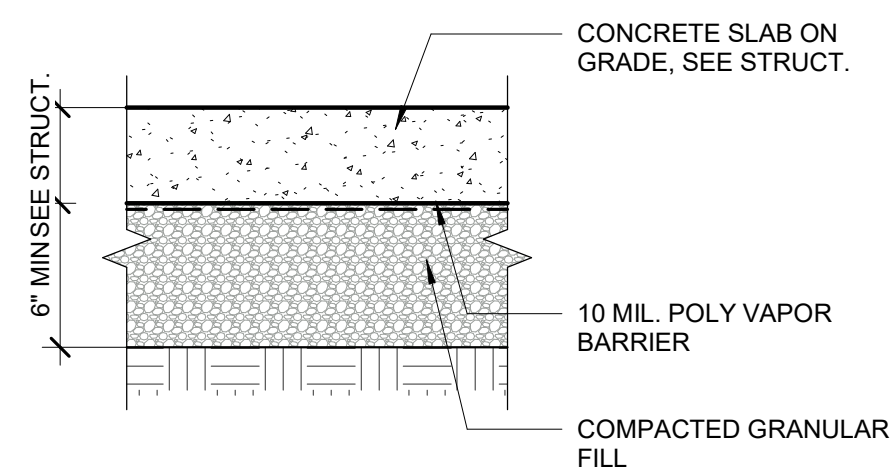
- REFER TO ADDITIONAL NOTES AND REQUIREMENTS ON ALL OTHER DOCUMENTS, DISCIPLINES AND SPECIFICATIONS.
 - USE DIMENSIONAL INFORMATION GIVEN. DO NOT SCALE DRAWINGS.
 - EXTERIOR GRID DIMENSIONS ARE TYPICALLY INDICATED TO THE EXTERIOR FACE OF STUD UNLESS OTHERWISE NOTED.
 - INTERIOR PARTITION DIMENSIONS ARE TYPICALLY INDICATED TO THE FACE OF STUD UNLESS OTHERWISE NOTED.
 - ALL SITE INFO, FIXTURES AND EQUIPMENT SHOWN ON THIS SHEET IS PROVIDED FOR COORDINATION PURPOSES ONLY. THE LAYOUT IS CONSIDERED CONCEPTUAL. REFER TO CIVIL, MECHANICAL, ELECTRICAL, PLUMBING, FIRE SPRINKLER, LIFE-SAFETY, ETC. DOCUMENTS FOR SPECIFIC DESIGN INFORMATION.
 - FOR WALL TYPES NOT SEEN ON PLAN REFER TO WALL SECTIONS AND DETAILS.
 - REFER TO ENLARGED PLANS IF ITS AVAILABLE FOR ADDITIONAL EXTERIOR AND INTERIOR INFORMATION.
 - BUILDING STRUCTURAL ELEMENTS SUCH MAIN FRAMES AND COLUMNS ARE SHOWN FOR REFERENCE ONLY. SEE STRUCTURAL DRAWINGS FOR DETAILS.
- ADDITIONAL NOTES:**
- WALL ASSEMBLY NOTE. DO NOT PERMIT MORTAR TO DROP OR ACCUMULATE INTO CAVITY AIR SPACE OR TO PLUG WEEP HOLES.
 - INSTALL MORTAR COLLECTION DEVICE CONTINUOUSLY AT THE BOTTOM OF EACH CAVITY ABOVE THROUGH WALL FLASHING.
 - INSTALL 2" RIGID INSULATION VERTICAL AND HORIZONTALLY AT ENTIRE PERIMETER OF BUILDING

EXTERIOR WALLS LEGEND

MARK	WALL LAYERS DESCRIPTION	FIRE RATING	RATING SOURCE	NOTES
E 1	3/8" MODULAR BRICK 1 1/2" AIR SPACE CONTINUOUS AIR AND VAPOR BARRIER EXTERIOR SHEATHING - SEE STRUCTURAL SCHEDULE 6" STEEL STUD FRAMING AT 16" O.C. FIBERGLASS BATT INSULATION - (R-21) MIN. TYPE "X" 5/8" GYPSUM BOARD WALL PANEL	--	--	SEE ELEVATIONS FOR BRICK TYPE & FINISH. MASONRY TIES TO BE SPACED 16" O.C. VERTICALLY & 24" O.C. HORIZONTALLY
E 2	4" CAST STONE VENEER, ANCHOR PER IBC, SEE STRUCT. 1 1/2" AIR SPACE CONTINUOUS AIR AND VAPOR BARRIER EXTERIOR SHEATHING - SEE STRUCTURAL SCHEDULE 6" STEEL STUD FRAMING AT 16" O.C. FIBERGLASS BATT INSULATION - (R-21) MIN. TYPE "X" 5/8" GYPSUM BOARD WALL PANEL	--	--	ANCHORS PER MANUFACTURER RECOMMENDATIONS
E 3	STUCCO (INSTALL PER MFGOR INSTRUCTIONS) 1" RIGID INSULATION (R-5) DRAINAGE MATT CONTINUOUS AIR AND VAPOR BARRIER EXTERIOR SHEATHING - SEE STRUCTURAL SCHEDULE 6" STEEL STUD FRAMING AT 16" O.C. FIBERGLASS BATT INSULATION - (R-21) MIN. TYPE "X" 5/8" GYPSUM BOARD WALL PANEL	--	--	
E 4	3/8" MODULAR BRICK 1" AIR SPACE 8" CMU	--	--	EXTERIOR GARBAGE ENCLOSURE AND METERS WINGS

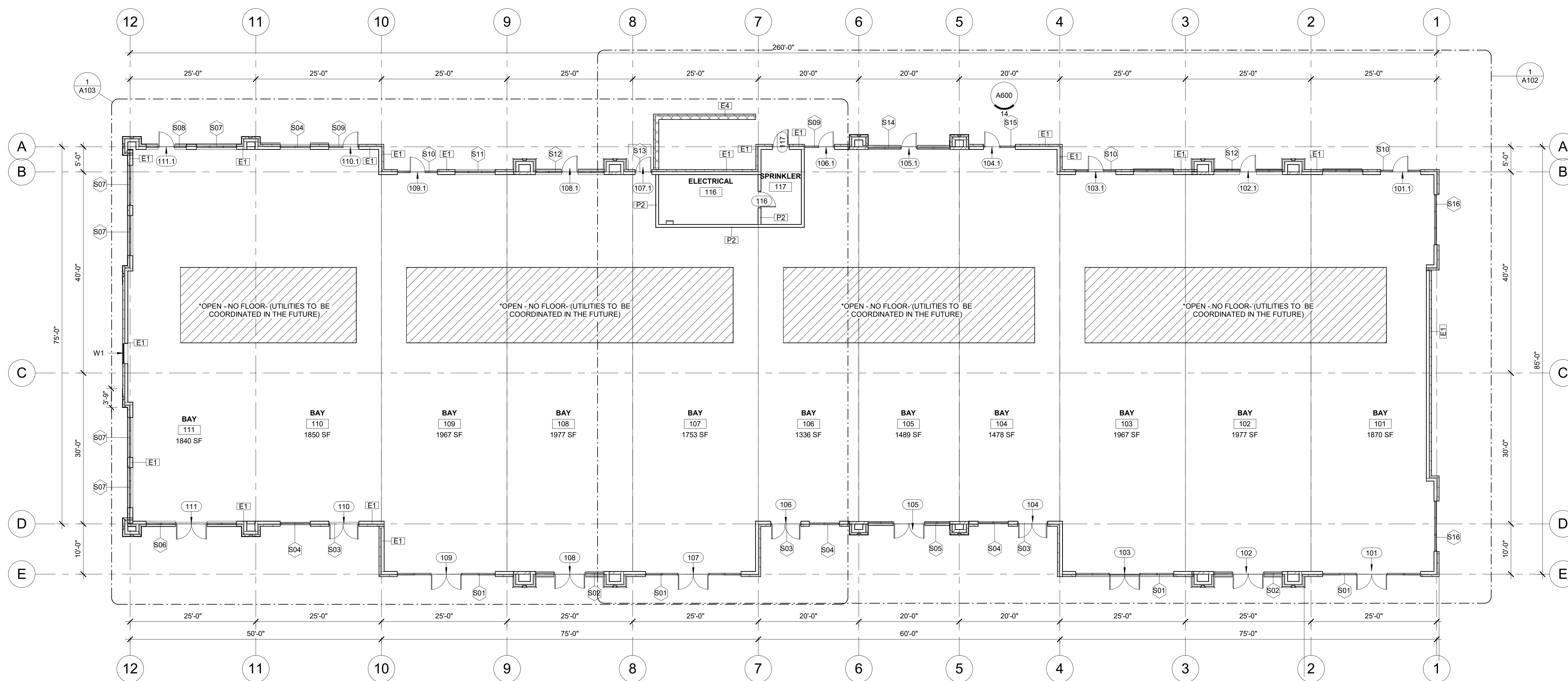
INTERIOR WALLS LEGEND

MARK	WALL LAYERS DESCRIPTION	FIRE RATING	RATING SOURCE	NOTES
P 1	SHEAR WALL 6" METAL STUDS 24" O.C.	--	--	SEE STRUCTURAL FOR ADDITIONAL INFORMATION. SOUND BATT INSULATION WILL BE REQUIRED WHEN SPACE IS OCCUPIED
P 2	5/8" INTERIOR GYPSUMBOARD PANELS 6" METAL STUDS 16" O.C. BATT INSULATION 5/8" INTERIOR GYPSUMBOARD PANELS	--	--	*AT SPRINKLER ROOM, TAKE INTERIOR WALL TO DECK.



4 TYP. FLOOR ASSEMBLY - SLAB ON GRADE
 1 1/2" = 1'-0"

(SEAL ALL PENETRATIONS WITH STEGO TAPE)



1 OVERALL FLOOR PLAN
 3/32" = 1'-0"