

EXTERIOR FINISHES

KEY	MATERIAL	COLOR
EF-2	EIFS	TO MATCH SW 7064 'PASSIVE GRAY'
EF-3	DOORS/METAL TRIM	SW 7674 'PEPPER CORN'
EF-4	ACRYLIC SIGN	SW CUSTOM 'BIG-O-TIRE RED'
EF-6	THIN BRICK VENEER / CANOPY / METAL CAP / STEEL ROOF	TO MATCH SW 6258 'TRICORN BLACK'
EF-7	THIN STONE VENEER	EL DORADO - STACKED STONE - SILVER LINING

NOTES:
 1. SIGNAGE SHOWN FOR REFERENCE ONLY.
 2. COLOR SPECIFIED IS SHERWIN WILLIAMS (SW)
 3. FINAL COLOR SELECTIONS TO BE APPROVED BY OWNER PRIOR TO ORDERING

KEYED NOTES

KEY NOTE
 FINISH MATERIAL

④ EF-4

- THIN BRICK VENEER.
- SOLDIER COURSE BRICK.
- MANUF STONE LEDGE.
- METAL FASCIA, PREFINISHED TO MATCH COLOR SHOWN.
- EIFS FACADE, PAINT.
- EIFS ACCENT BAND, PAINT.
- MANUF THIN STONE VENEER.
- OVERHEAD DOOR, PRE-FINISHED.
- SAFETY CHAIN BY OWNER.
- METAL CANOPY, PRE-FINISHED TO MATCH COLOR SHOWN.
- PROPOSED SIGN LOCATION. SHOWN FOR REFERENCE ONLY. SIGN VENDOR TO INSTALL UNDER SEPARATE PERMIT.
- ANODIZED ALUM STOREFRONT W/ SAFETY GLAZING.
- APPROX RTU LOCATION. SCREENED BY ADJACENT PARAPET.
- HM DOOR AND FRAME, PAINT.
- 3/4" EIFS REVEAL REFER TO DETAIL E5/ A-502
- EXTERIOR WALL MOUNTED LIGHTING.
- PRIMARY SCUPPER & D.S., PRE-FINISHED.
- OVERFLOW SCUPPER, PRE-FINISHED.
- CAST IRON DOWNSPOUT BOOT W/ ABOVE GROUND DISCHARGE. (UR HOE & SONS A-SERIES OR EQ)
- INCOMING ELECTRIC CABINET AND METER LOCATION. COORDINATE W/ ELEC. PAINT TO MATCH ADJACENT WHERE ALLOWED BY AHJ.
- INCOMING GAS SERVICE AND METER LOCATION. COORDINATE W/ PLMB. PAINT TO MATCH ADJACENT WHERE ALLOWED BY AHJ.
- OVER-THE-PARAPET ROOF ACCESS LADDER W/ SECURED DOOR.
- STEEL ROOF STRUCTURE. SEE STRUCTURAL. PAINT.
- SMOOTH FACE CMU, TO MATCH ADJACENT STONE/BRICK.
- FIRE DEPARTMENT CONNECTION
- HOSE BIB LOCATIONS

SOUTH FACADE MATERIAL PERCENTAGES

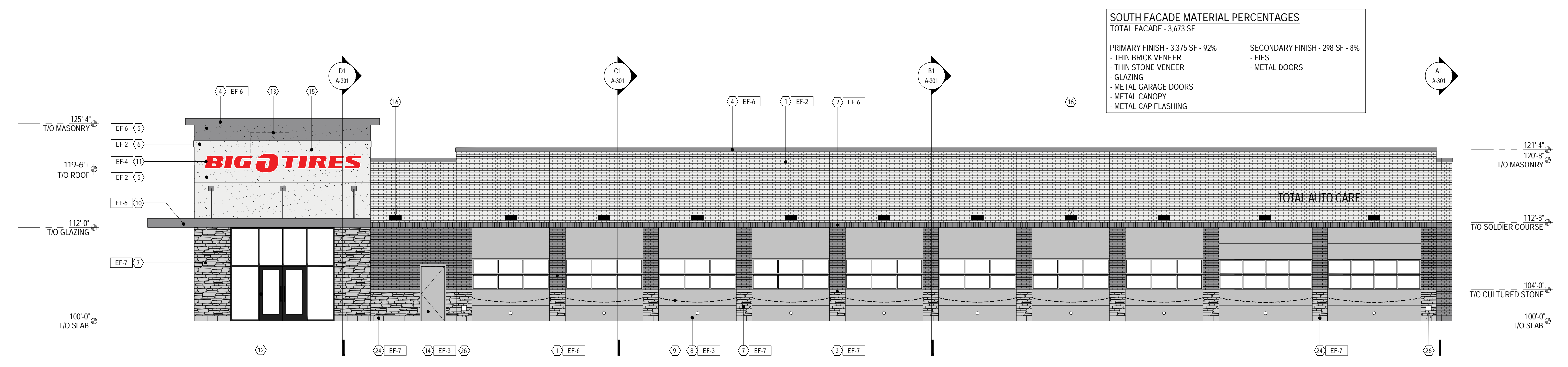
TOTAL FACADE - 3,673 SF

PRIMARY FINISH - 3,375 SF - 92%	SECONDARY FINISH - 298 SF - 8%
- THIN BRICK VENEER	- EIFS
- THIN STONE VENEER	- METAL DOORS
- GLAZING	
- METAL GARAGE DOORS	
- METAL CANOPY	
- METAL CAP FLASHING	

NORTH FACADE MATERIAL PERCENTAGES

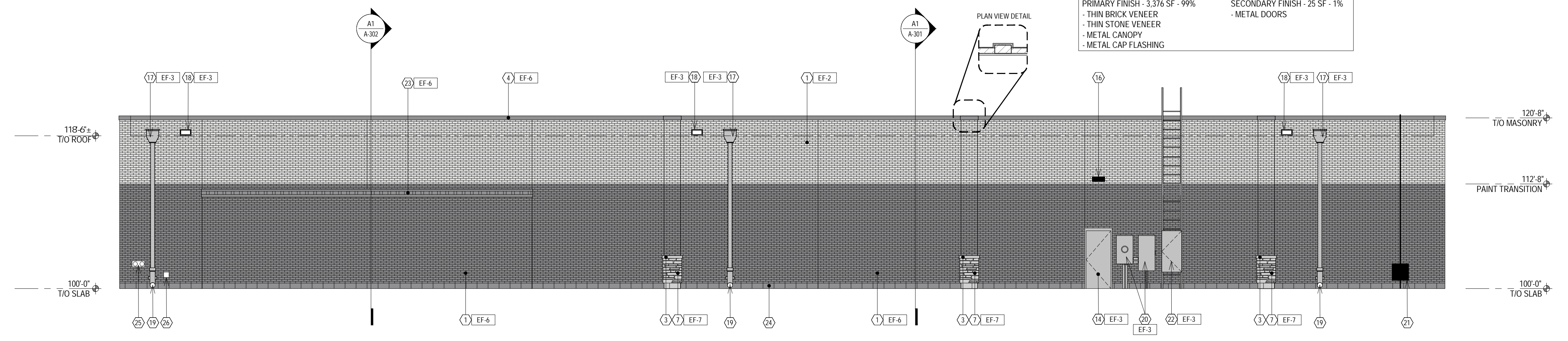
TOTAL FACADE - 3,401 SF

PRIMARY FINISH - 3,376 SF - 99%	SECONDARY FINISH - 25 SF - 1%
- THIN BRICK VENEER	- METAL DOORS
- THIN STONE VENEER	
- METAL CANOPY	
- METAL CAP FLASHING	



EXTERIOR ELEVATION - SOUTH A3
 SCALE: 1/8" = 1'-0"

GENERAL NOTES:
 - GENERAL CONTRACTOR TO PROVIDE SHOP DRAWINGS OF CMU WALL SHOWING CONTROL JOINT LOCATIONS PRIOR TO ANY FABRICATION.
 - THIN BRICK VENEER CONTROL JOINT LOCATIONS ARE TO ALIGN WITH CMU CONTROL JOINTS.
 - ALL SIGNAGE WILL BE REVIEWED AND APPROVED WITH A SEPARATE SIGN PERMIT APPLICATION.



EXTERIOR ELEVATION - NORTH A2
 SCALE: 1/8" = 1'-0"

WEST FACADE MATERIAL PERCENTAGES

TOTAL FACADE - 1,240 SF

PRIMARY FINISH - 967 SF - 78%	SECONDARY FINISH - 273 SF - 22%
- THIN BRICK VENEER	- EIFS
- THIN STONE VENEER	
- GLAZING	
- METAL CANOPY	
- METAL CAP FLASHING	

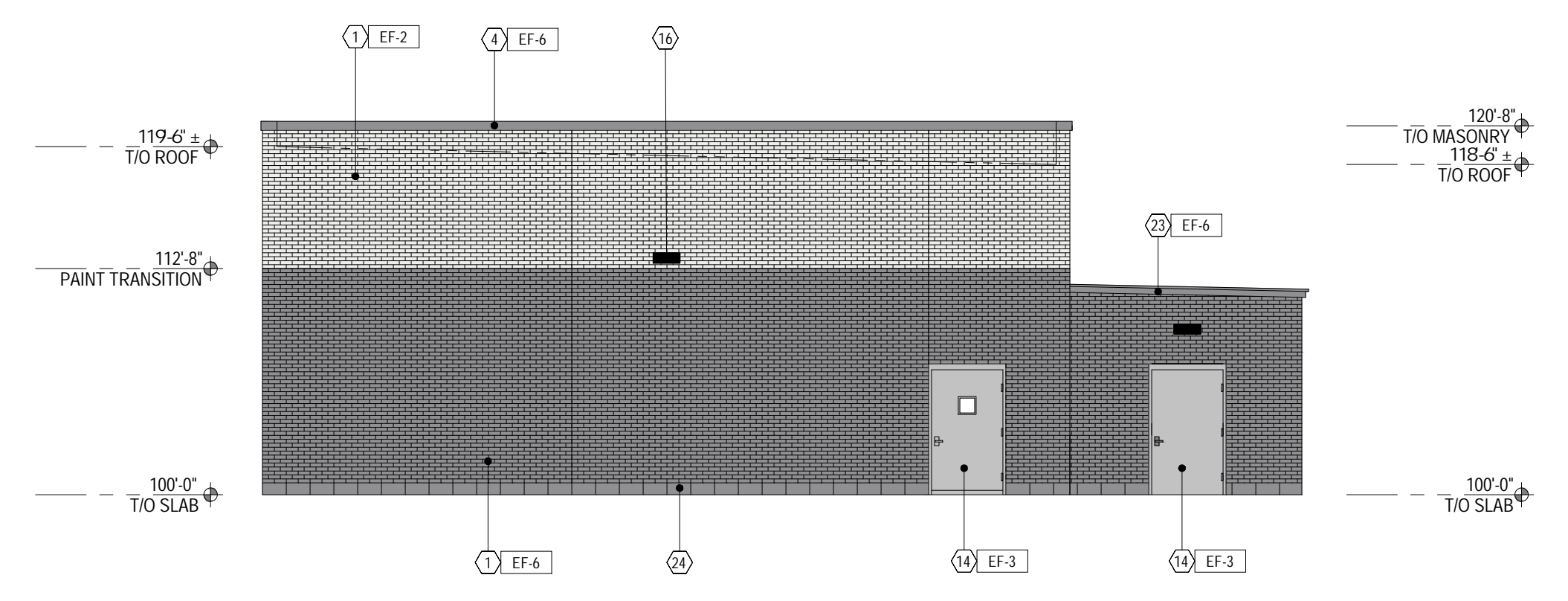
EAST FACADE MATERIAL PERCENTAGES

TOTAL FACADE - 1,099 SF

PRIMARY FINISH - 1,074 SF - 98%	SECONDARY FINISH - 25 SF - 2%
- THIN BRICK VENEER	- METAL DOORS
- METAL CAP FLASHING	



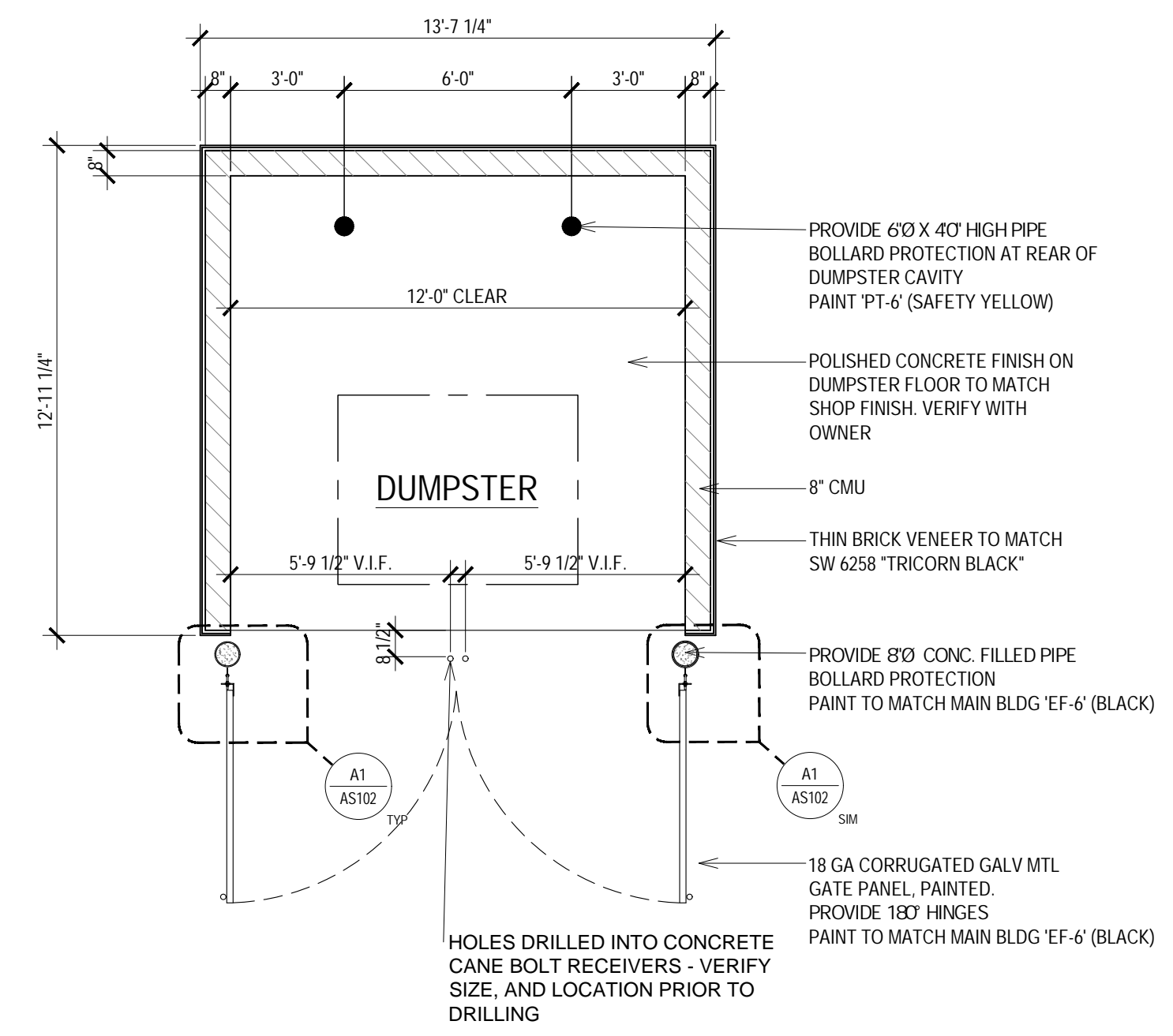
EXTERIOR ELEVATION - WEST B1
 SCALE: 1/8" = 1'-0"



EXTERIOR ELEVATION - EAST A1
 SCALE: 1/8" = 1'-0"

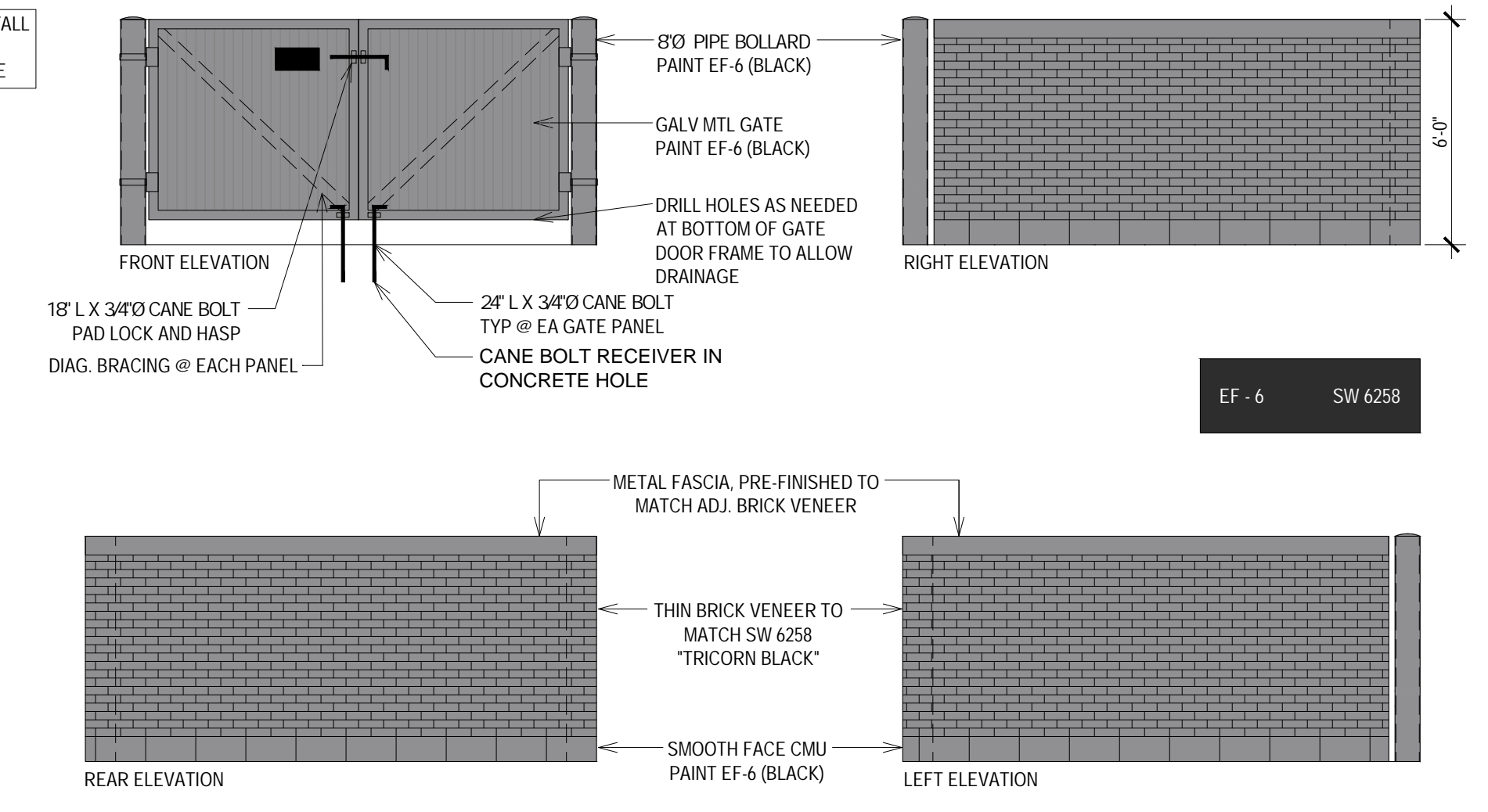
NOTES

1. FIELD COORDINATE DUMPSTER ENCLOSURE LOCATION PER CIVIL PLANS.
2. REFER TO EXTERIOR ELEVATIONS SHEET A-201 FOR MAIN BUILDING EXTERIOR.

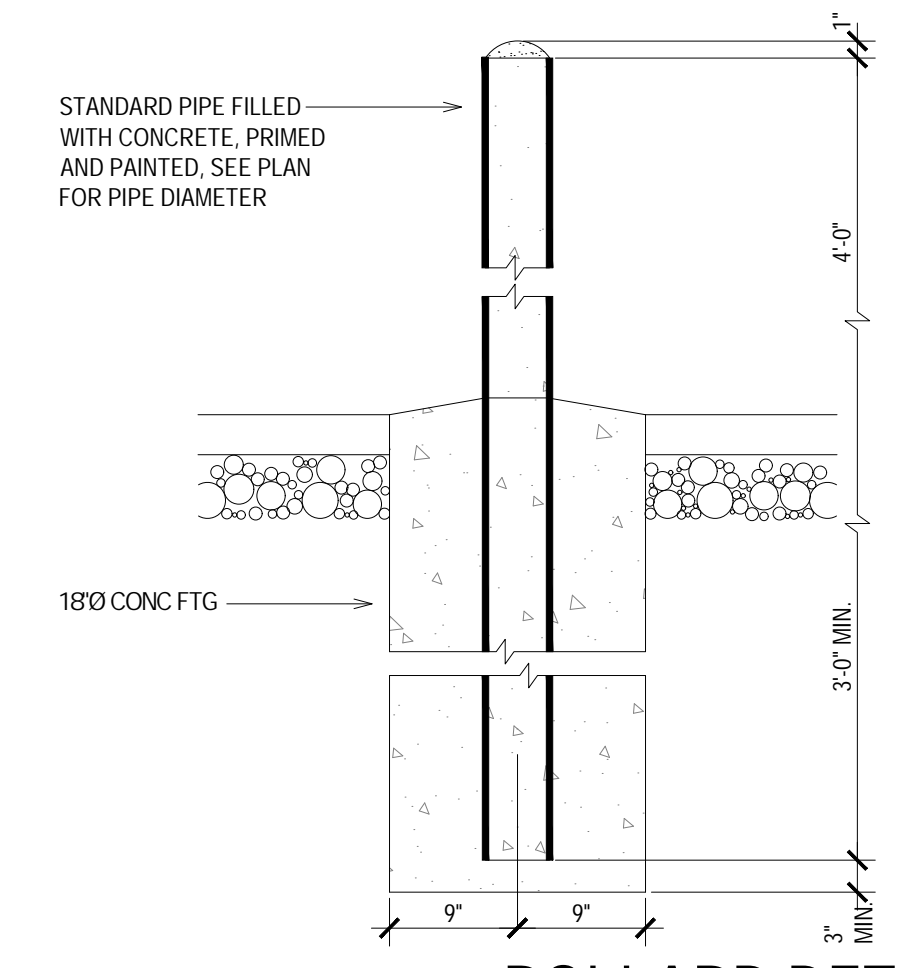


DUMPSTER ENCLOSURE PLAN B3
SCALE: 1/4" = 1'-0"

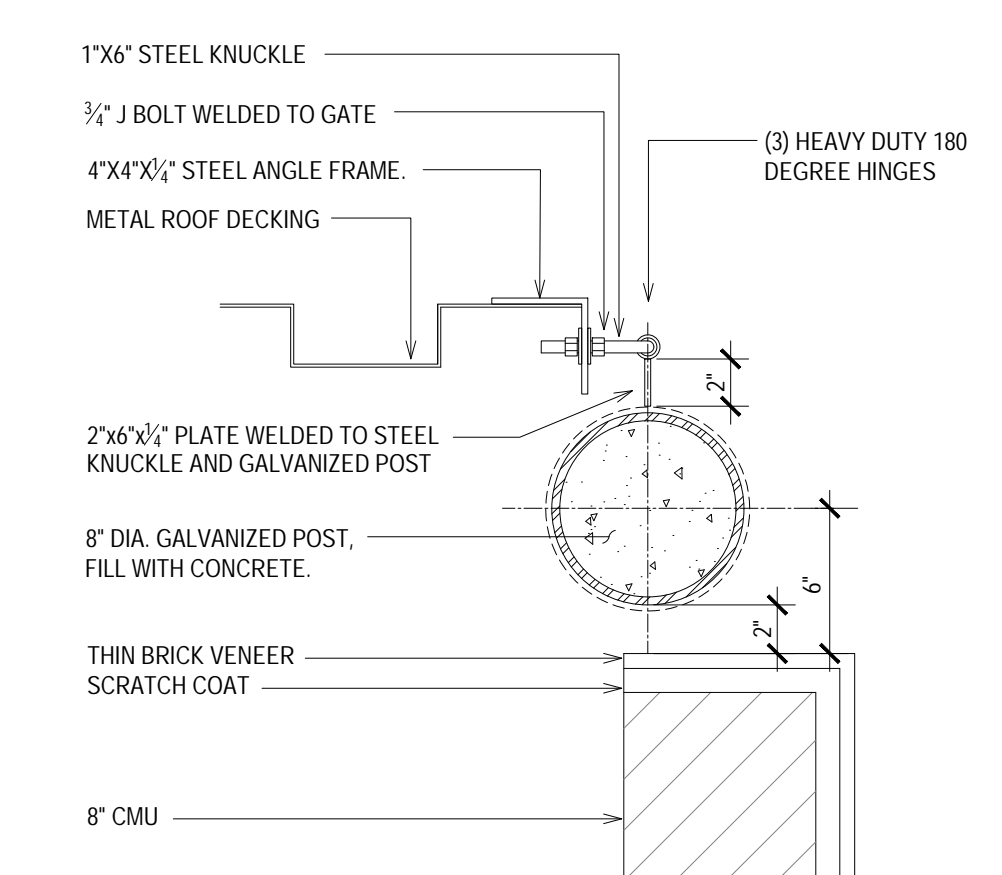
NOTE: CONTRACTOR TO INSTALL NO TRESPASSING SIGN ON DUMPSTER TIRE ENCLOSURE



DUMPSTER ENCLOSURE ELEVATIONS A2
SCALE: 1/4" = 1'-0"



BOLLARD DETAIL B1
SCALE: 1" = 1'-0"



GATE HINGE DETAIL A1
SCALE: 1 1/2" = 1'-0"

CONSULTANT



CLIENT

WESTWOOD contractors, inc.

PROJECT INFORMATION

BIG TIRES
SEC SE ALICE'S RD &
SE FRONTIER AVE
WAUKEE, IA 50263
DALLAS COUNTY

SEAL:

NOT FOR CONSTRUCTION

PROJECT NO.: 2025-0397
DRAWN BY: LCW/CML
CHECKED BY: FFG

ISSUE: DATE:
CHECK SET 2026-02-20

REVISION: DATE:

TITLE:
DUMPSTER ENCLOSURE

SHEET NUMBER:
AS102