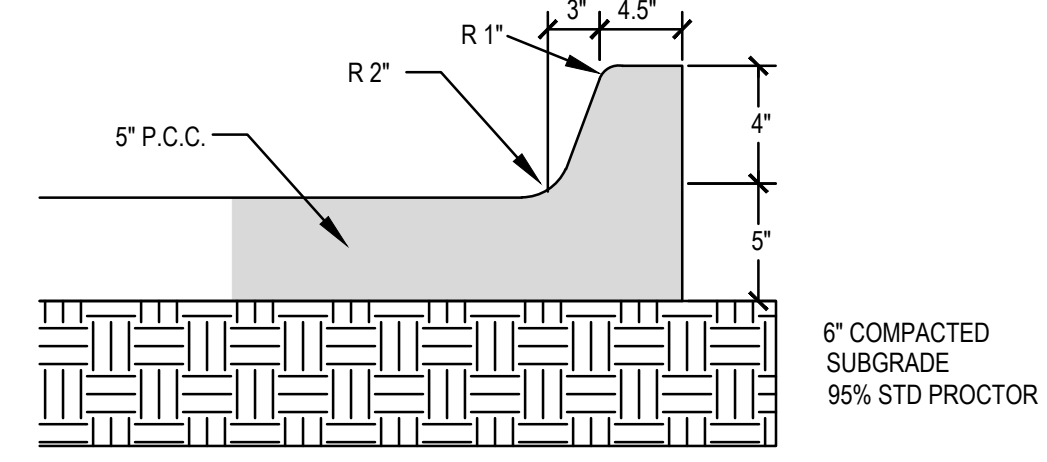
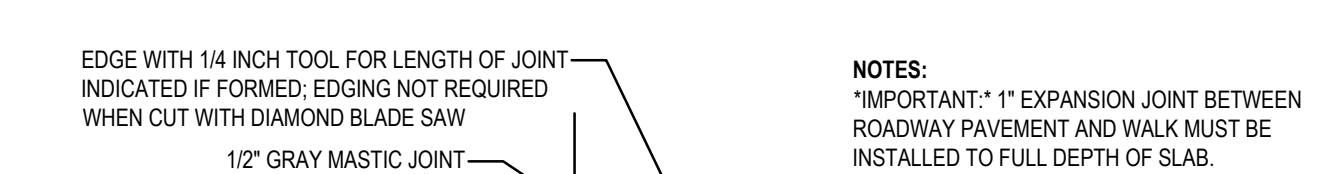


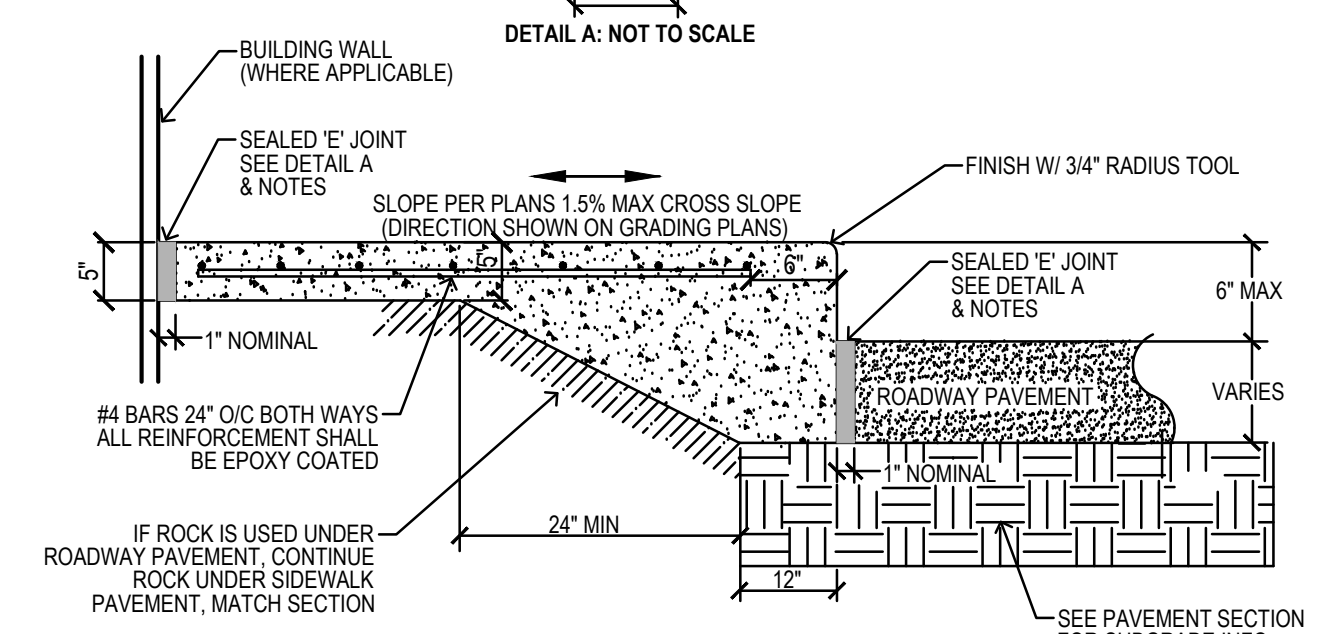
NOTES:  
1. SLOPE SIDEWALK IN ACCORDANCE WITH GRADING PLAN. 1.0% - 1.5% CROSS SLOPE PREFERRED, 2% MAX CROSS SLOPE.



STD. P.C.C. SIDEWALK & CURB DETAIL  
SCALE NONE

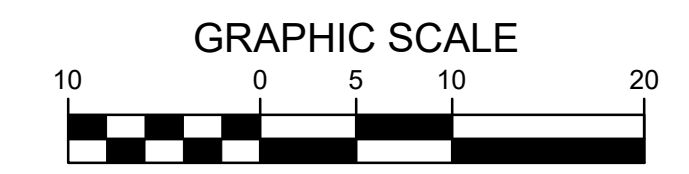


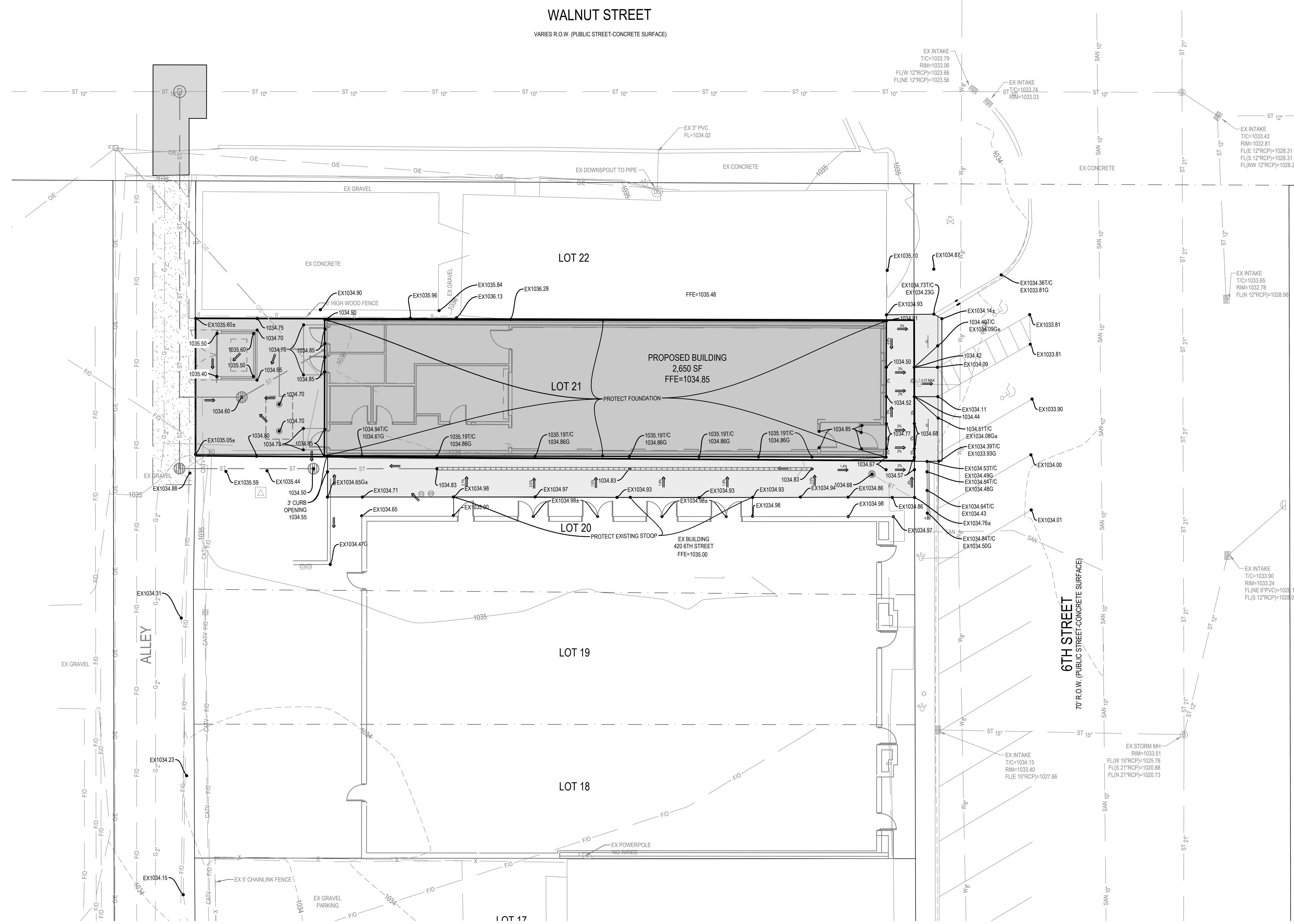
TURNED DOWN WALK DETAIL  
SCALE NONE



BOLLARD W/ HC PARKING SIGN DETAIL  
SCALE NONE

- LAYOUT NOTES:**
- REFER TO SHEET C0.1 FOR GENERAL CIVIL NOTES
  - SEE FINAL ARCHITECTURAL PLANS FOR BUILDING DIMENSIONS.
  - CONTRACTOR TO REFER TO ARCHITECTURAL PLANS FOR DETAILED BUILDING CONSTRUCTION INFORMATION.
  - CONTRACTOR TO REFER TO STRUCTURAL PLANS FOR DETAILED BUILDING FOUNDATION AND STOOP LOCATIONS AND DETAILED CONSTRUCTION INFORMATION.
  - CONTRACTOR TO MATCH AND CONNECT TO EXISTING PCC PAVEMENTS WITH IOWA SUDAS TYPICAL BT JOINT.





- GRADING LEGEND:**
- EXISTING CONTOUR ——— 150 ———
  - PROPOSED CONTOUR ——— 150 ———
  - FINISHED GROUND ELEVATION ——— 150.50 ———
  - TOP OF CURB ELEVATION ——— 150.50TC ———
  - GUTTER ELEVATION ——— 150.50G ———
  - TOP OF WALL ELEVATION ——— 150.50TW ———
  - BOTTOM OF WALL ELEVATION ——— 150.50BW ———
  - EDGE OF WALK ELEVATION ——— 150.50EW ———
  - TOP OF STAIR ELEVATION ——— 150.50TS ———
  - BOTTOM OF STAIR ELEVATION ——— 150.50BS ———
- NOTE: WALL ELEVATIONS SHOWN ON PLAN ARE FINISHED GROUND GRADES AT THE TOP AND BOTTOM OF THE WALL

- TOPSOIL NOTES:**
- STRIP AND STOCKPILE THE TOP 8" OF SOIL ON ALL DISTURBED AREAS.
  - RESPREAD TOPSOIL TO A MINIMUM DEPTH OF 8" ON ALL GREEN (NON PAVED) AREAS. IMPORT TOPSOIL AS NECESSARY TO ACHIEVE A MINIMUM DEPTH OF 6".
  - TOPSOIL SHALL BE FREE OF ALL ROCK AND DEBRIS LARGER THAN 3/4" IN SIZE.
  - TOPSOIL IS DEFINED AS FERTILE, FRAGILE LOAM, CAPABLE OF SUSTAINING VIGOROUS PLANT GROWTH, FROM WELL DRAINED SITE FREE FROM FLOODING, NOT IN FROZEN OR MUDDY CONDITIONS; REASONABLE FREE FROM SUBSOIL, CLAY LUMPS, ROOTS, GRASS, WEEDS, STONES LARGER THAN 3/4 INCH IN DIAMETER, AND FOREIGN MATTER; ACIDITY RANGE (PH) OF 5.5 TO 7.5; CONTAINING MINIMUM 4 PERCENT AND MAXIMUM 20 PERCENT ORGANIC MATTER.
  - CONTRACTOR SHALL BE RESPONSIBLE FOR ENSURING ALL TOPSOIL REQUIREMENTS OF NPDES GENERAL PERMIT NO. 2 ARE MET.

