



**MATERIAL LEGEND**

FB 1 FACE BRICK 1, COLOR CHELSEA IRONSPOT | SIZE: MODULAR | COURSING: RUNNING BOND  
 FB 2 FACE BRICK 2, COLOR DUNES GRAY VELOUR | SIZE: UTILITY | COURSING: 1/3 RUNNING BOND  
 FB 3 FACE BRICK 3, COLOR DUNES GRAY VELOUR | SIZE: MODULAR | COURSING: SEE ELEVATIONS  
 STB COURSING: STACK BOND - SEE ELEVATIONS FOR LOCATION AND EXTENT  
 SLB COURSING: SOLDIER BOND - SEE ELEVATIONS FOR LOCATION AND EXTENT  
 CS CAST STONE  
 MF 7" TWO-PIECE SWAP ON ALUMINUM FASCIA TRIM  
 ASF ALUMINUM STOREFRONT SYSTEM W/ INSULATED GLAZING | 2X6 SIZE

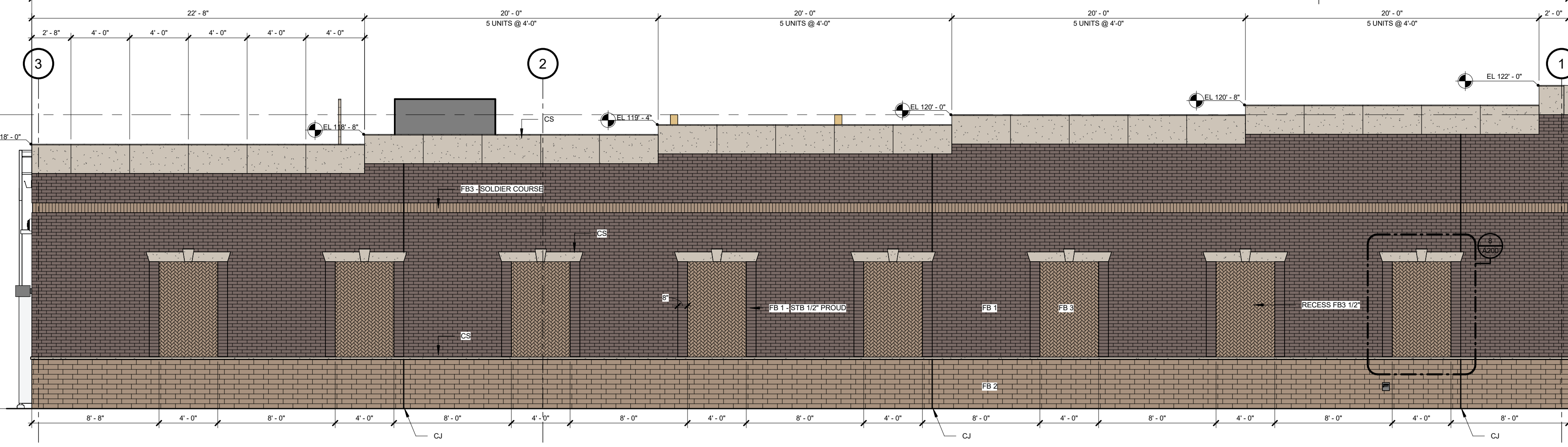
**MATERIAL PERCENTAGES**

NORTH			SOUTH		
TOTAL SF	SF	%	TOTAL SF	SF	%
1,834	1,834	100	2,025	2,025	100
MASONRY			MASONRY		
GLAZING	NA	NA	GLAZING	NA	NA
DOORS	NA	NA	DOORS	NA	NA

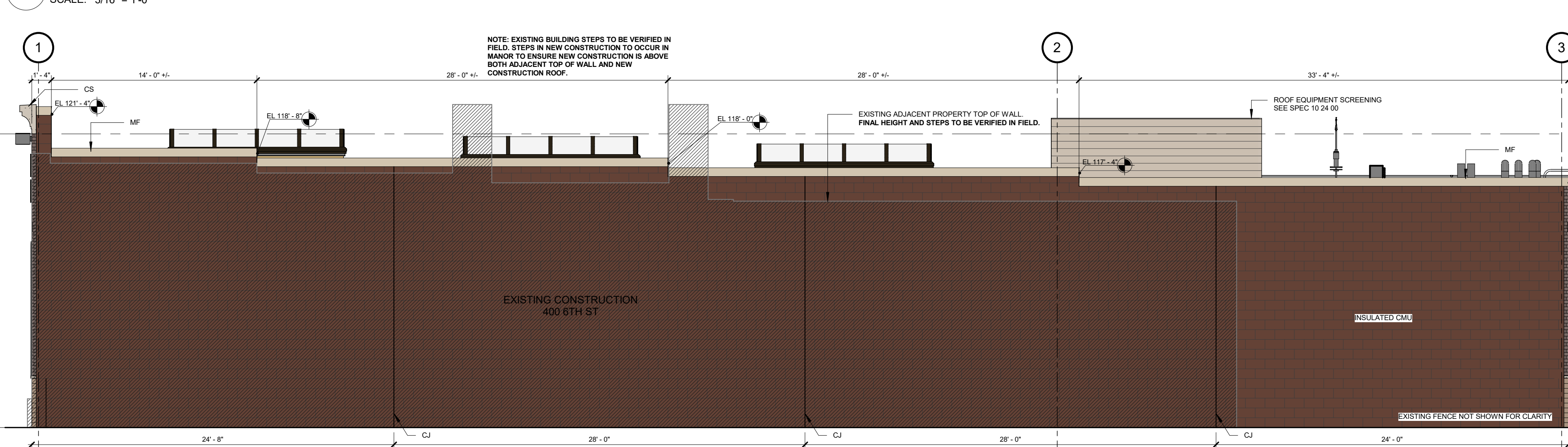
  

WEST			EAST		
TOTAL SF	SF	%	TOTAL SF	SF	%
398	398	81	394	394	71
MASONRY			MASONRY		
GLAZING	NA	NA	GLAZING	163	29
DOORS	74	19	DOORS	NA	NA

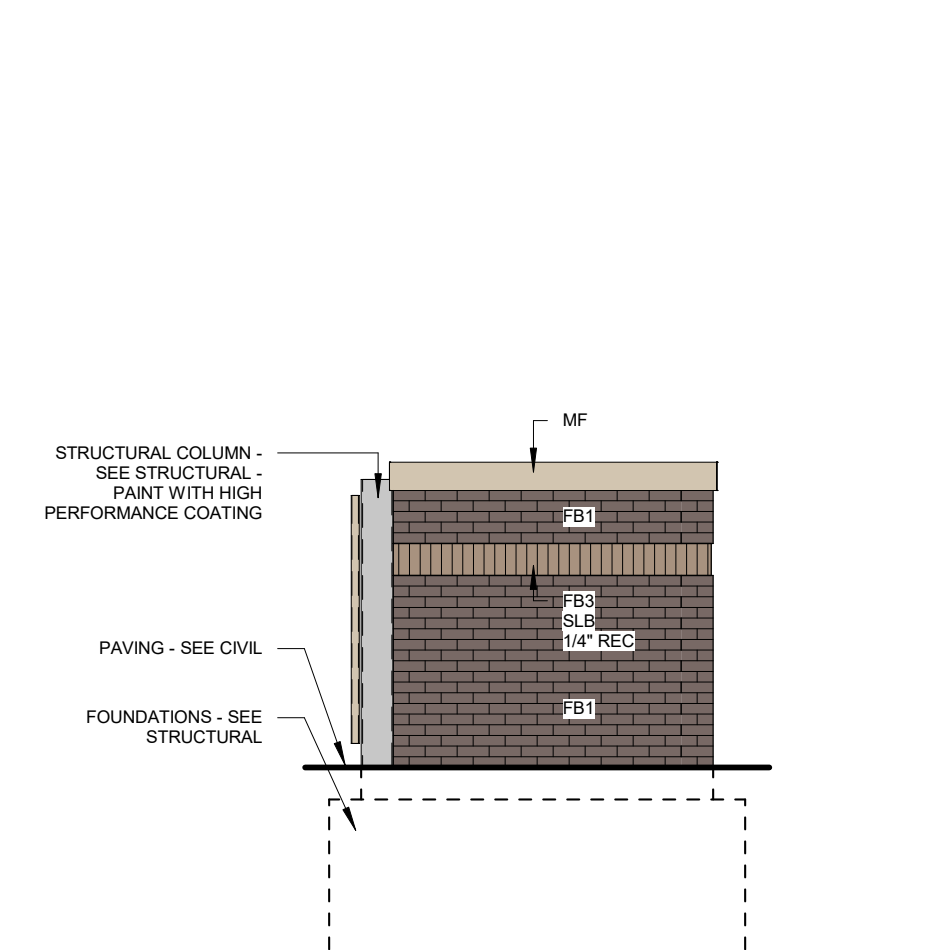
1 EXTERIOR ELEVATION - EAST  
SCALE: 3/16" = 1'-0"



2 EXTERIOR ELEVATION - SOUTH  
SCALE: 3/16" = 1'-0"



4 EXTERIOR ELEVATION - NORTH  
SCALE: 3/16" = 1'-0"

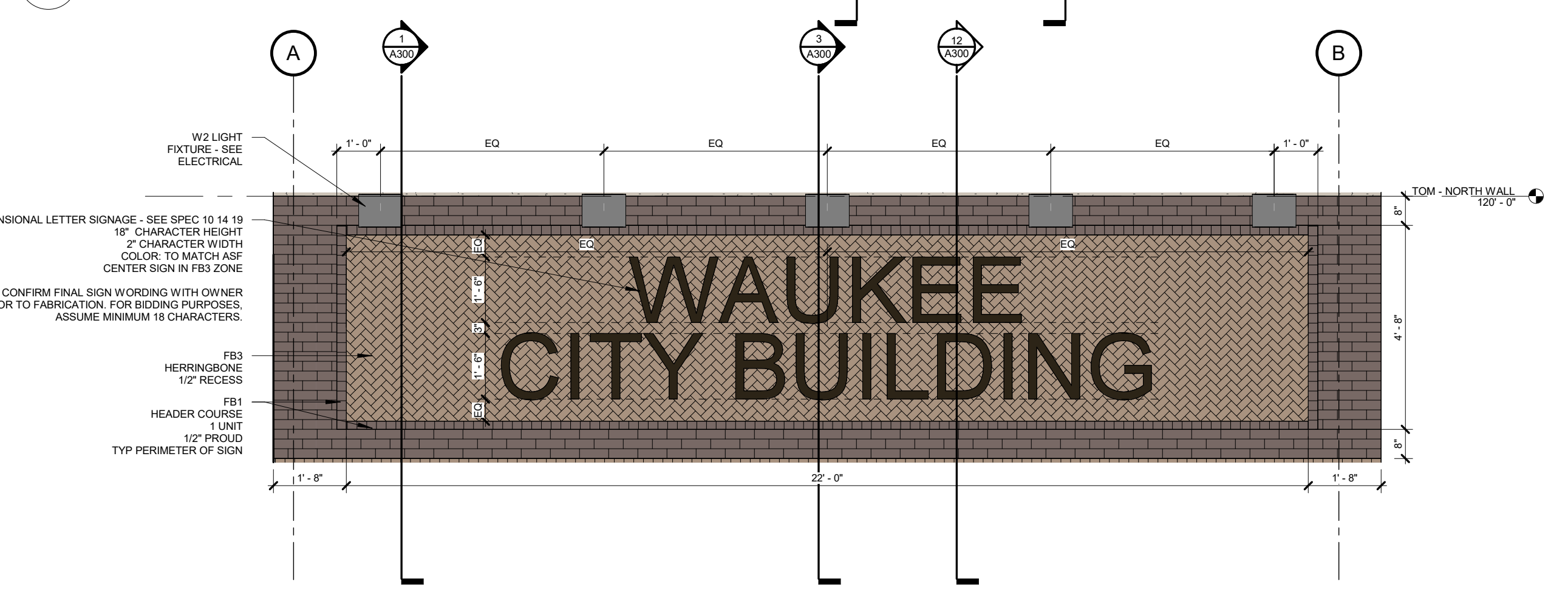


5 EXTERIOR ELEVATION - TRASH NORTH & SOUTH  
SCALE: 1/4" = 1'-0"

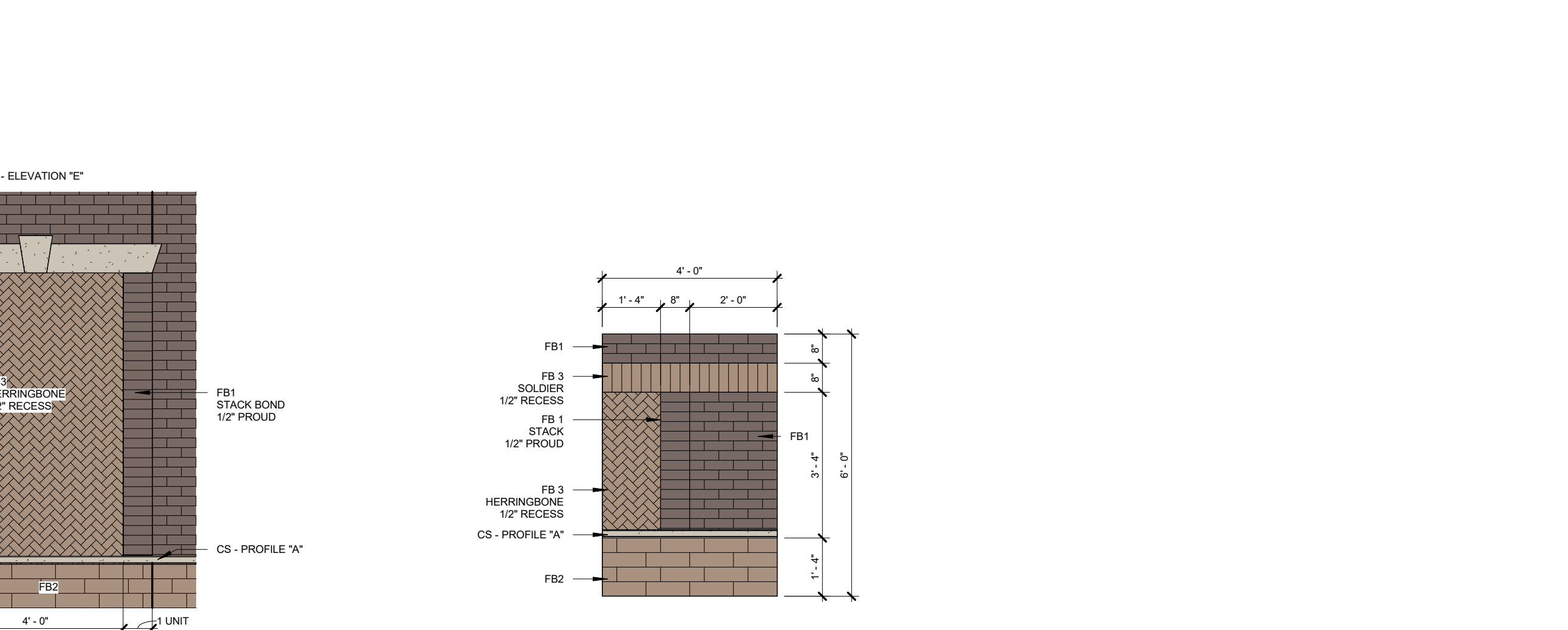
6 EXTERIOR ELEVATION - TRASH EAST  
SCALE: 1/4" = 1'-0"

7 EXTERIOR ELEVATION - TRASH WEST  
SCALE: 1/4" = 1'-0"

3 EXTERIOR ELEVATION - WEST  
SCALE: 3/16" = 1'-0"



9 EXTERIOR ELEVATION - EAST - BUILDING SIGN  
SCALE: 3/8" = 1'-0"



8 EXTERIOR ELEVATION - SOUTH - ACCENTS  
SCALE: 3/8" = 1'-0"

10 EXTERIOR ELEVATION - MOCK UP  
SCALE: 3/8" = 1'-0"