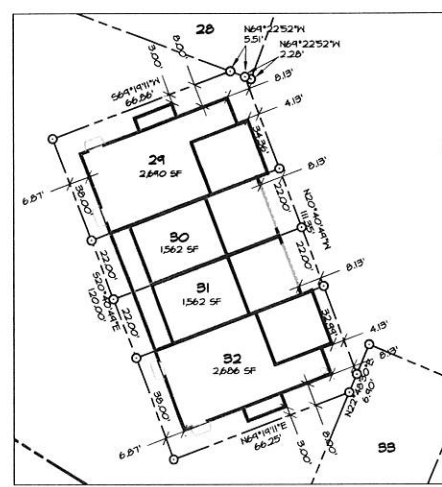
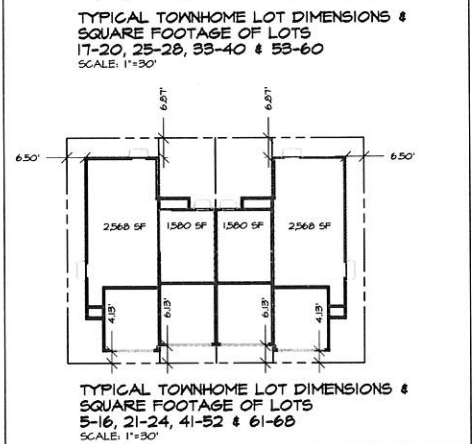
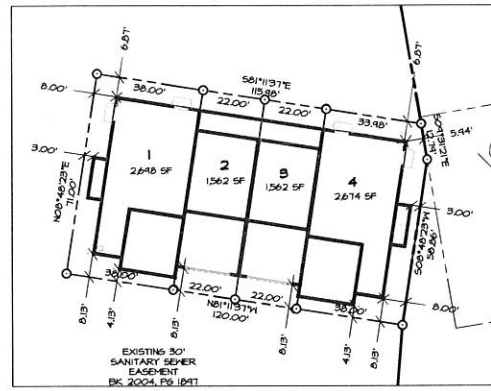
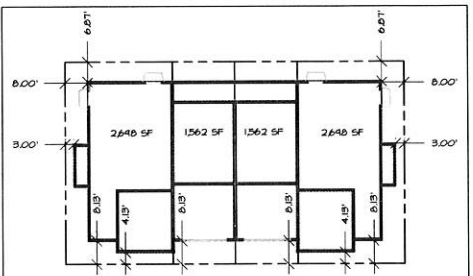


FINAL PLAT WILLIAMS POINTE TOWNHOMES PLAT 1

SHEET TWO OF THREE

CENTERLINE CURVE DATA						
CURVE	DELTA	RADIUS	LENGTH	TANGENT	CHORD	CH. BEARING
C1	15°28'04"	150.00'	40.49'	20.37'	40.37'	S82°15'58"E
C2	14°09'07"	200.00'	44.40'	24.83'	44.21'	S81°36'30"E
C3	21°51'08"	500.00'	190.70'	96.52'	184.54'	S03°13'23"E
C4	25°57'44"	200.00'	90.63'	46.10'	84.85'	S01°10'05"E
C5	13°12'42"	200.00'	46.12'	23.16'	46.02'	S05°12'26"W
C6	28°41'36"	500.00'	250.40'	127.88'	241.74'	S12°56'53"W
C7	103°26'06"	100.00'	180.53'	126.70'	156.94'	S24°25'21"E
C8	35°00'50"	400.00'	244.44'	126.17'	240.66'	S58°31'54"E
C9	2°50'47"	200.00'	9.94'	4.97'	9.93'	S42°32'58"E



LOT CORNER COORDINATES		
NUMBER	CORNER	COORDINATES
1	NE	4181.74 6513.35
4	NE	4163.94 6621.96
5	NE	4633.07 6502.51
8	SW	4528.07 6503.18
9	NE	4509.60 6502.15
12	SW	4406.85 6523.76
13	NE	4394.45 6520.41
16	SW	4246.06 6502.11
17	NE	4274.66 6512.53
20	SW	4159.66 6512.73
21	NE	4160.01 6506.76
24	SW	4058.12 6481.37
25	NE	4052.66 6483.88
28	SW	3840.35 6441.62
29	NE	3844.48 6438.23
32	SW	3782.21 6480.61
33	SW	3756.90 6522.11
36	SE	3710.38 6632.72
37	SW	3716.41 6641.17
40	SE	3651.64 6742.15
41	SW	3638.18 6737.01
44	SE	3561.76 6814.84
45	NE	3771.05 6494.68
48	NE	3844.48 6843.66
49	NE	3865.31 6824.21
52	NE	3912.52 6730.23
53	NE	3904.69 6716.56
56	NE	3956.80 6606.19
57	SE	3944.57 6673.74
60	NE	4064.04 6704.75
61	SE	4074.92 6719.26
64	NE	4178.27 6737.82
65	SE	4193.32 6731.67
68	NE	4248.28 6734.62

- LEGEND**
- PROPERTY BOUNDARY
 - - - SECTION LINES
 - LOT LINES
 - CENTERLINE
 - ▲ FOUND SECTION CORNER
 - FOUND PROPERTY CORNER (3/4" I.R. W/ ORANGE CAP #2265 UNLESS OTHERWISE NOTED)
 - SET PROPERTY CORNER (3/4" I.R. W/ YELLOW CAP #1844 UNLESS OTHERWISE NOTED)
 - D. DEEDED DISTANCE
 - M. MEASURED DISTANCE
 - P. PREVIOUSLY RECORDED DISTANCE
 - I.R. IRON ROD
 - I.P. IRON PIPE
 - P.O.B. POINT OF BEGINNING
 - 52 LOT NUMBER
 - (202) UNIT ADDRESS
(ALL PROPOSED ADDRESSES ARE OFF OF SE WILLIAMS COURT)

FINAL PLAT
WILLIAMS POINTE TOWNHOMES PLAT 1

CEC
Civil Engineering Consultants, Inc.

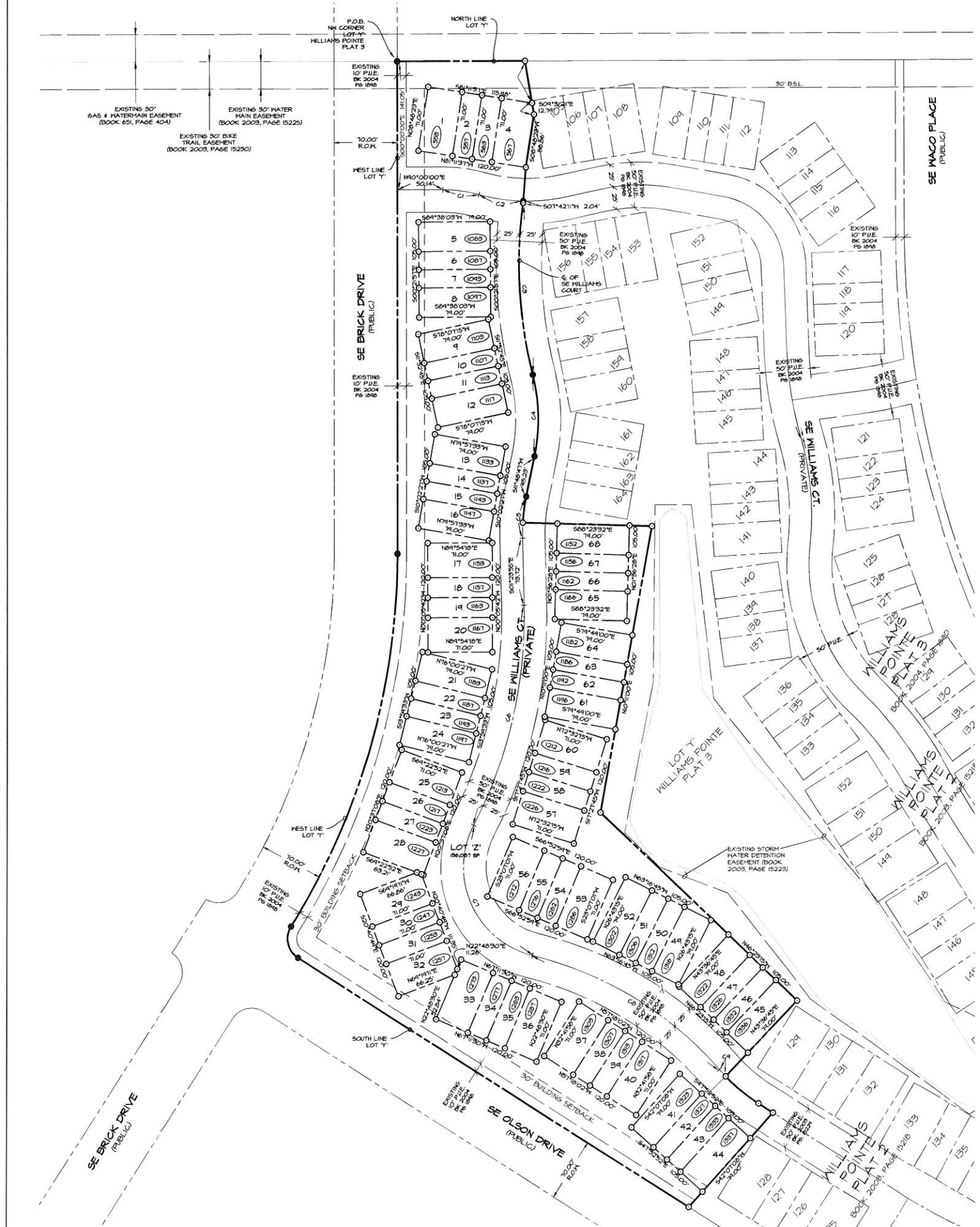
Scale: 1"=60'

NORTH

2400 80th Street Unit 12 Des Moines, Iowa 50322
515 276 4884 Fax: 515 276 7084 mail@cecinc.com

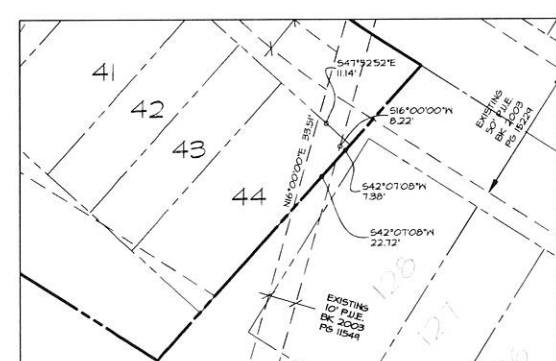
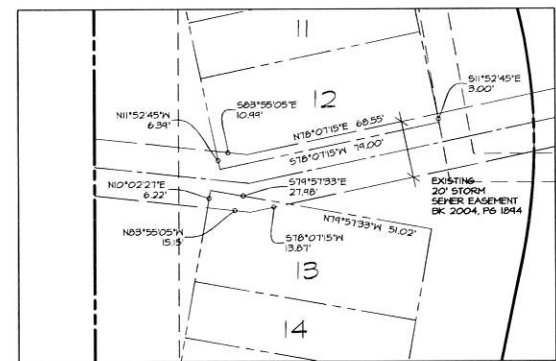
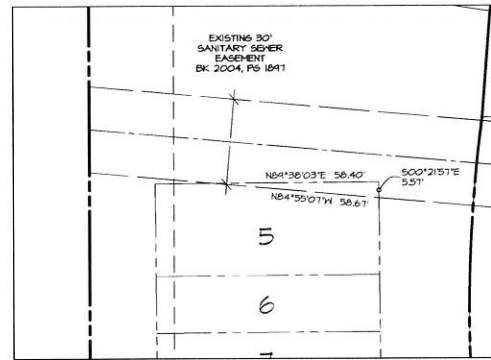
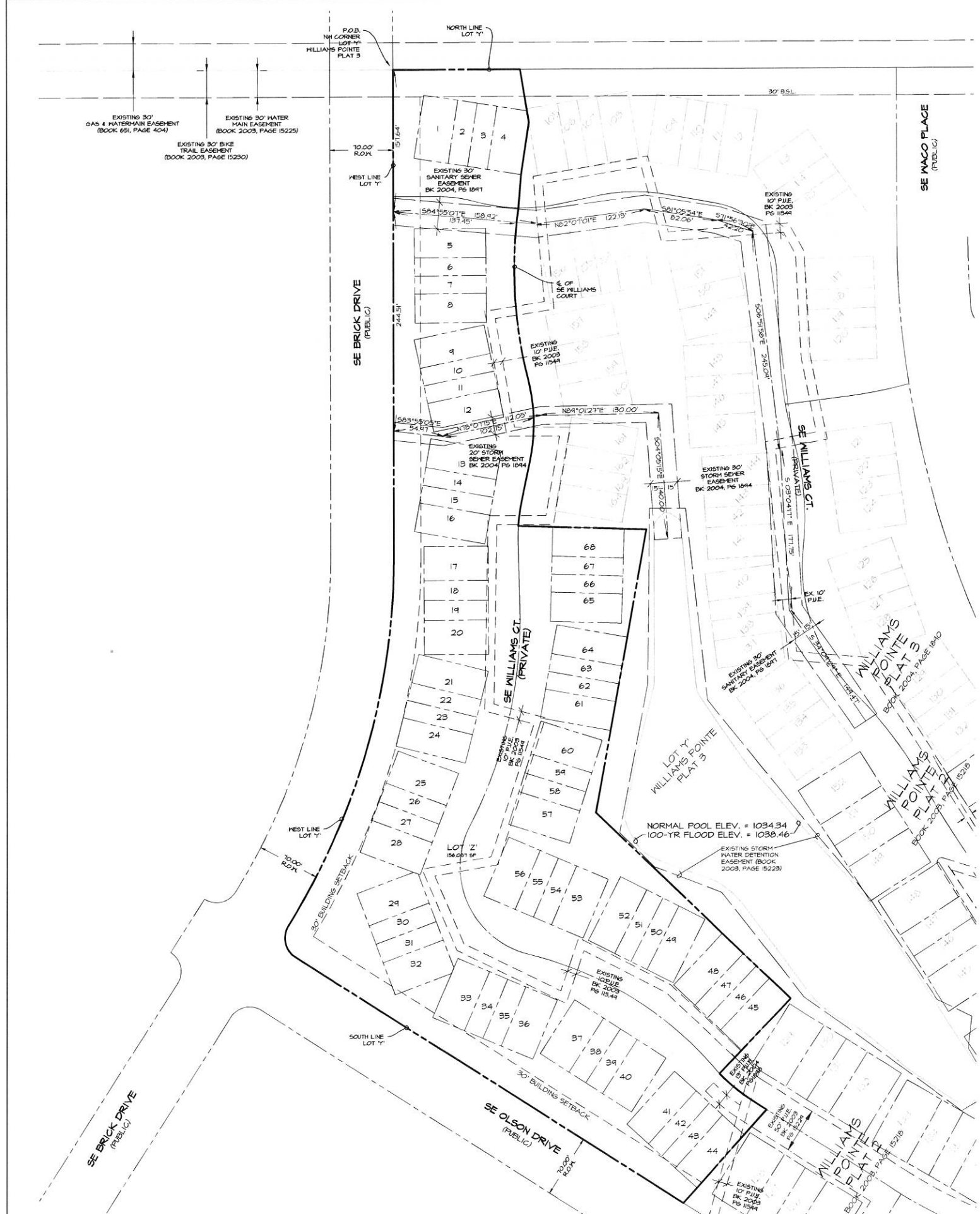
SHEET 2 OF 3

DATE: JUNE 11, 2013



© 2013 CIVIL ENGINEERS CONSULTANTS, INC. ALL RIGHTS RESERVED. THIS DOCUMENT IS THE PROPERTY OF CIVIL ENGINEERS CONSULTANTS, INC. AND IS NOT TO BE REPRODUCED OR TRANSMITTED IN ANY FORM OR BY ANY MEANS, ELECTRONIC OR MECHANICAL, WITHOUT THE WRITTEN PERMISSION OF CIVIL ENGINEERS CONSULTANTS, INC.

FINAL PLAT
**WILLIAMS POINTE
 TOWNHOMES PLAT 1**
 SHEET THREE OF THREE



LEGEND

—	PROPERTY BOUNDARY
- - -	SECTION LINES
---	LOT LINES
---	CENTERLINE
▲	FOUND SECTION CORNER
●	FOUND PROPERTY CORNER (6" I.R. W/ORANGE CAP #12265 UNLESS OTHERWISE NOTED)
○	SET PROPERTY CORNER (6" I.R. W/YELLOW CAP #1844 UNLESS OTHERWISE NOTED)
D.	DEEDED DISTANCE
M.	MEASURED DISTANCE
P.	PREVIOUSLY RECORDED DISTANCE
I.R.	IRON ROD
I.P.	IRON PIPE
P.O.B.	POINT OF BEGINNING
52	LOT NUMBER
(302)	UNIT ADDRESS (ALL PROPOSED ADDRESSES ARE OFF OF SE WILLIAMS COURT)

FINAL PLAT
WILLIAMS POINTE TOWNHOMES PLAT 1

CEC
 Civil Engineering Consultants, Inc.

2400 86th Street Unit 12 Des Moines, Iowa 50322
 515 276 4884 Fax 515 276 7084 mail@cecinc.com

Scale 1"=60'

NORTH

DATE: JUN 01, 2013
 REVISION: JUN 11, 2013

SHEET 3 OF 3

C:\P\15311\15311.dwg (15311) 11/11/13 11:11:11 AM