

CURVE DATA

CURVE	DELTA	RADIUS	TANGENT	LENGTH	CH. BEARINGS
C1	118.922	590.00	6.04	12.09	S118.922W
C2	212.157	220.00	4.23	8.46	N121.073E
C3	123.501	500.00	6.04	12.09	S123.501E
C4	152.000	300.00	5.47	10.94	N152.000W
C5	152.000	300.00	5.47	10.94	S152.000E
C6	152.000	300.00	5.47	10.94	N152.000W
C7	152.000	300.00	5.47	10.94	S152.000E
C8	152.000	300.00	5.47	10.94	N152.000W
C9	152.000	300.00	5.47	10.94	S152.000E
C10	152.000	300.00	5.47	10.94	N152.000W
C11	152.000	300.00	5.47	10.94	S152.000E
C12	152.000	300.00	5.47	10.94	N152.000W
C13	152.000	300.00	5.47	10.94	S152.000E
C14	152.000	300.00	5.47	10.94	N152.000W
C15	152.000	300.00	5.47	10.94	S152.000E
C16	152.000	300.00	5.47	10.94	N152.000W
C17	152.000	300.00	5.47	10.94	S152.000E
C18	152.000	300.00	5.47	10.94	N152.000W
C19	152.000	300.00	5.47	10.94	S152.000E
C20	152.000	300.00	5.47	10.94	N152.000W
C21	152.000	300.00	5.47	10.94	S152.000E
C22	152.000	300.00	5.47	10.94	N152.000W
C23	152.000	300.00	5.47	10.94	S152.000E
C24	152.000	300.00	5.47	10.94	N152.000W
C25	152.000	300.00	5.47	10.94	S152.000E
C26	152.000	300.00	5.47	10.94	N152.000W
C27	152.000	300.00	5.47	10.94	S152.000E
C28	152.000	300.00	5.47	10.94	N152.000W
C29	152.000	300.00	5.47	10.94	S152.000E
C30	152.000	300.00	5.47	10.94	N152.000W
C31	152.000	300.00	5.47	10.94	S152.000E
C32	152.000	300.00	5.47	10.94	N152.000W
C33	152.000	300.00	5.47	10.94	S152.000E
C34	152.000	300.00	5.47	10.94	N152.000W
C35	152.000	300.00	5.47	10.94	S152.000E
C36	152.000	300.00	5.47	10.94	N152.000W
C37	152.000	300.00	5.47	10.94	S152.000E
C38	152.000	300.00	5.47	10.94	N152.000W
C39	152.000	300.00	5.47	10.94	S152.000E
C40	152.000	300.00	5.47	10.94	N152.000W
C41	152.000	300.00	5.47	10.94	S152.000E
C42	152.000	300.00	5.47	10.94	N152.000W
C43	152.000	300.00	5.47	10.94	S152.000E
C44	152.000	300.00	5.47	10.94	N152.000W
C45	152.000	300.00	5.47	10.94	S152.000E
C46	152.000	300.00	5.47	10.94	N152.000W
C47	152.000	300.00	5.47	10.94	S152.000E
C48	152.000	300.00	5.47	10.94	N152.000W

LINE TABLE

LINE	BEARINGS	LENGTH	MINIMUM OPENING ELEV.
L1	N14.901E	1033.00	1033.00
L2	S12.071E	1034.50	1034.50
L3	S12.071E	1035.00	1035.00
L4	N12.071E	1036.00	1036.00
L5	S12.071E	1037.50	1037.50
L6	N12.071E	1038.00	1038.00
L7	S12.071E	1038.50	1038.50
L8	N12.071E	1039.00	1039.00
L9	S12.071E	1039.50	1039.50
L10	N12.071E	1039.50	1039.50
L11	S12.071E	1039.50	1039.50
L12	N12.071E	1039.50	1039.50
L13	S12.071E	1039.50	1039.50
L14	N12.071E	1039.50	1039.50
L15	S12.071E	1039.50	1039.50
L16	N12.071E	1039.50	1039.50
L17	S12.071E	1039.50	1039.50
L18	N12.071E	1039.50	1039.50
L19	S12.071E	1039.50	1039.50
L20	N12.071E	1039.50	1039.50
L21	S12.071E	1039.50	1039.50
L22	N12.071E	1039.50	1039.50
L23	S12.071E	1039.50	1039.50
L24	N12.071E	1039.50	1039.50
L25	S12.071E	1039.50	1039.50
L26	N12.071E	1039.50	1039.50
L27	S12.071E	1039.50	1039.50
L28	N12.071E	1039.50	1039.50
L29	S12.071E	1039.50	1039.50
L30	N12.071E	1039.50	1039.50
L31	S12.071E	1039.50	1039.50
L32	N12.071E	1039.50	1039.50
L33	S12.071E	1039.50	1039.50
L34	N12.071E	1039.50	1039.50
L35	S12.071E	1039.50	1039.50
L36	N12.071E	1039.50	1039.50
L37	S12.071E	1039.50	1039.50
L38	N12.071E	1039.50	1039.50
L39	S12.071E	1039.50	1039.50
L40	N12.071E	1039.50	1039.50
L41	S12.071E	1039.50	1039.50
L42	N12.071E	1039.50	1039.50
L43	S12.071E	1039.50	1039.50
L44	N12.071E	1039.50	1039.50
L45	S12.071E	1039.50	1039.50
L46	N12.071E	1039.50	1039.50
L47	S12.071E	1039.50	1039.50
L48	N12.071E	1039.50	1039.50
L49	S12.071E	1039.50	1039.50
L50	N12.071E	1039.50	1039.50
L51	S12.071E	1039.50	1039.50
L52	N12.071E	1039.50	1039.50
L53	S12.071E	1039.50	1039.50
L54	N12.071E	1039.50	1039.50
L55	S12.071E	1039.50	1039.50
L56	N12.071E	1039.50	1039.50
L57	S12.071E	1039.50	1039.50
L58	N12.071E	1039.50	1039.50
L59	S12.071E	1039.50	1039.50
L60	N12.071E	1039.50	1039.50
L61	S12.071E	1039.50	1039.50
L62	N12.071E	1039.50	1039.50
L63	S12.071E	1039.50	1039.50
L64	N12.071E	1039.50	1039.50
L65	S12.071E	1039.50	1039.50
L66	N12.071E	1039.50	1039.50
L67	S12.071E	1039.50	1039.50
L68	N12.071E	1039.50	1039.50
L69	S12.071E	1039.50	1039.50
L70	N12.071E	1039.50	1039.50
L71	S12.071E	1039.50	1039.50
L72	N12.071E	1039.50	1039.50
L73	S12.071E	1039.50	1039.50
L74	N12.071E	1039.50	1039.50
L75	S12.071E	1039.50	1039.50
L76	N12.071E	1039.50	1039.50
L77	S12.071E	1039.50	1039.50
L78	N12.071E	1039.50	1039.50
L79	S12.071E	1039.50	1039.50
L80	N12.071E	1039.50	1039.50
L81	S12.071E	1039.50	1039.50
L82	N12.071E	1039.50	1039.50
L83	S12.071E	1039.50	1039.50
L84	N12.071E	1039.50	1039.50
L85	S12.071E	1039.50	1039.50
L86	N12.071E	1039.50	1039.50
L87	S12.071E	1039.50	1039.50
L88	N12.071E	1039.50	1039.50
L89	S12.071E	1039.50	1039.50
L90	N12.071E	1039.50	1039.50
L91	S12.071E	1039.50	1039.50
L92	N12.071E	1039.50	1039.50
L93	S12.071E	1039.50	1039.50
L94	N12.071E	1039.50	1039.50
L95	S12.071E	1039.50	1039.50
L96	N12.071E	1039.50	1039.50
L97	S12.071E	1039.50	1039.50
L98	N12.071E	1039.50	1039.50
L99	S12.071E	1039.50	1039.50
L100	N12.071E	1039.50	1039.50

MINIMUM OPENING ELEVATIONS

- NOTES**
- THE DEVELOPER WILL BE RESPONSIBLE FOR INSTALLATION OF SIDEWALKS.
 - LOTS 'A', 'B', & 'C' SHALL BE DEDICATED TO THE CITY OF MAUIKEE.
 - STREET LIGHTS INSTALLED BY MID-AMERICAN ENERGY COMPANY SHALL BE 100 WATT HP'S W/FLAT BOTTOM HEADS ON 30-FOOT POLES MOUNTED 4-FEET FROM BACK OF CURB.
 - 100 YEAR FLOOD ELEVATIONS: LOTS 1-9= 1030.10, LOTS 21-34= 1032.05.

FINAL PLAT
MILLON BROOK
PLAT 4

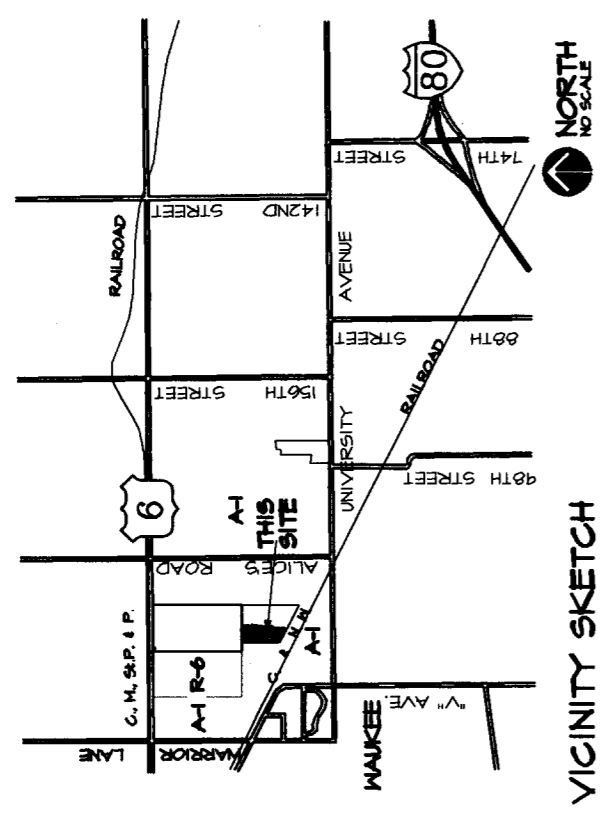
OWNER/DEVELOPER
REGENCE HOMES AND AFFILIATED COMPANIES
1000 WEST DES MOINES, IA 50266
PH: (515) 210-1441

APPROVED BY: [Signature]
DATE: 7/11/2005
SIGNED: [Signature]

CERTIFICATION

HEREBY CERTIFY THAT THIS LAND SURVEYING WORK WAS PERFORMED BY ME OR UNDER MY DIRECT PERSONAL SUPERVISION AND THAT I AM A DULY LICENSED LAND SURVEYOR UNDER THE LAWS OF THE STATE OF IOWA.

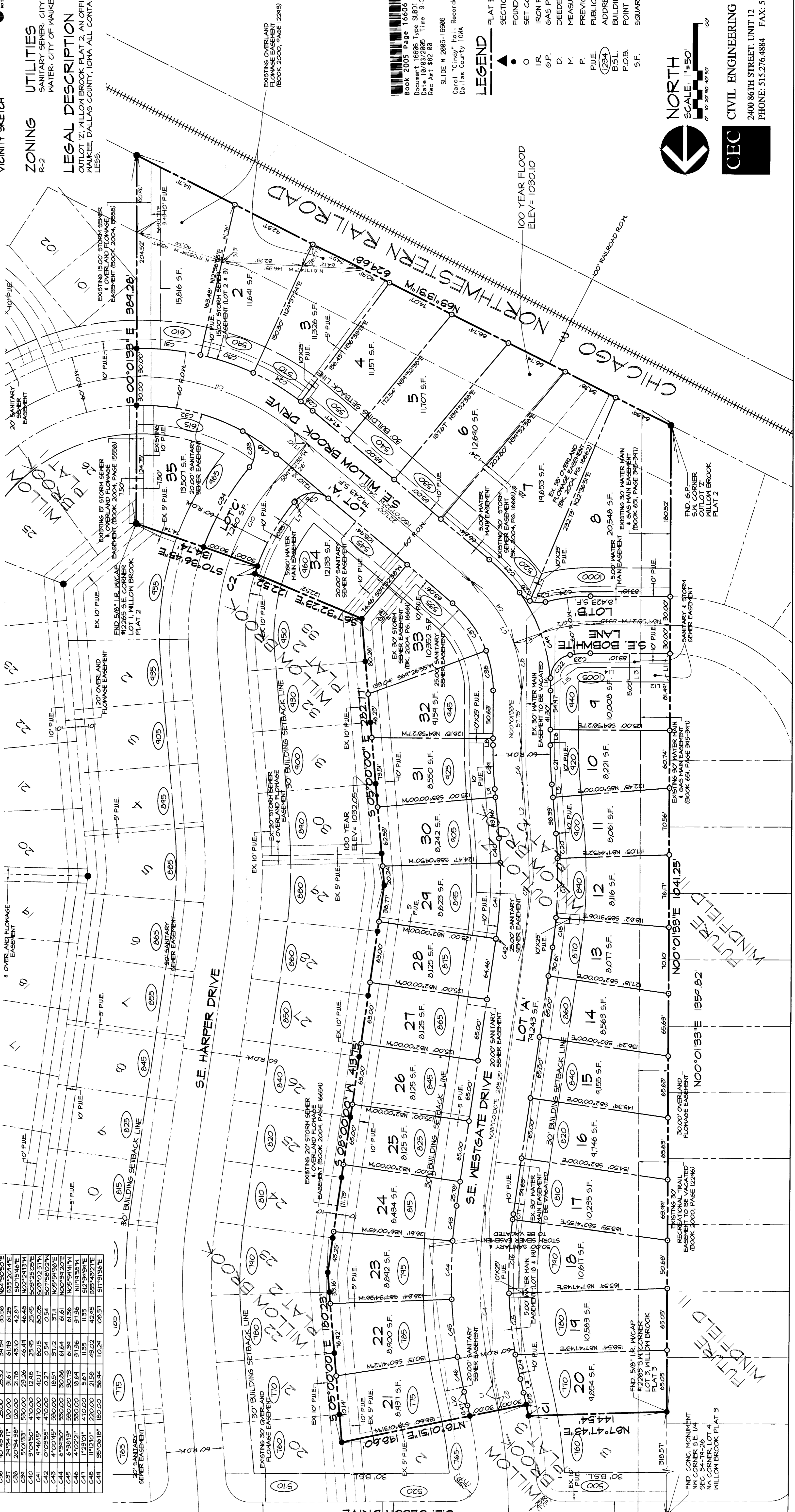
PATRICK J. SHEPARD
IOWA LICENSE NO. 12285
DATE 9-27-05
MY LICENSE RENEWAL DATE IS DECEMBER 31, 2005
PAGES OR SHEETS COVERED BY THIS SEAL:



ZONING
R-2

UTILITIES
SANITARY SEWER: CITY OF MAUIKEE
WATER: CITY OF MAUIKEE

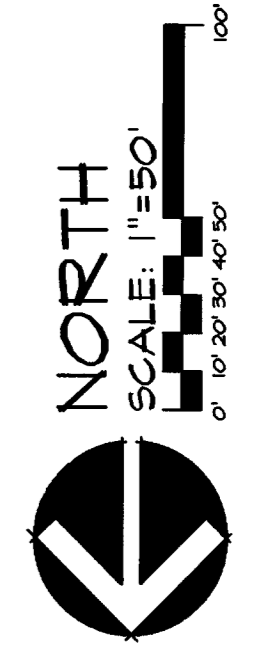
LEGAL DESCRIPTION
OUTLOT 27, MILLON BROOK PLAT 2, AN OFFICIAL PLAT IN THE CITY OF MAUIKEE, DALLAS COUNTY, IOWA ALL CONTAINING 10.535 ACRES MORE OR LESS.



Book 2005 Page 16606
Document 16686 Type SUBD) Pages 16
Date 10/03/2005 Time 9:36 AM
Rec Amt 822.86

SLIDE # 2005-16886
Carol "Cindy" Hol, Recorder
Dallas County IOWA

- LEGEND**
- PLAT BOUNDARY
 - SECTION CORNER
 - FOUND CORNER
 - SET CORNER W/ 5/8" I.R. W/CAP #12265
 - IRON ROD
 - GAS PIPE
 - DEEDED DISTANCE
 - MEASURED DISTANCE
 - PREVIOUSLY RECORDED DISTANCE
 - PUBLIC UTILITY EASEMENT
 - ADDRESS
 - B.S.L.
 - P.O.B.
 - POINT OF BEGINNING
 - SQUARE FEET



CEC
CIVIL ENGINEERING CONSULTANTS, INC.
2400 86TH STREET, UNIT 12, DES MOINES, IOWA 50322-4379
PHONE: 515.276.4884 FAX: 515.276.7084
E-5441