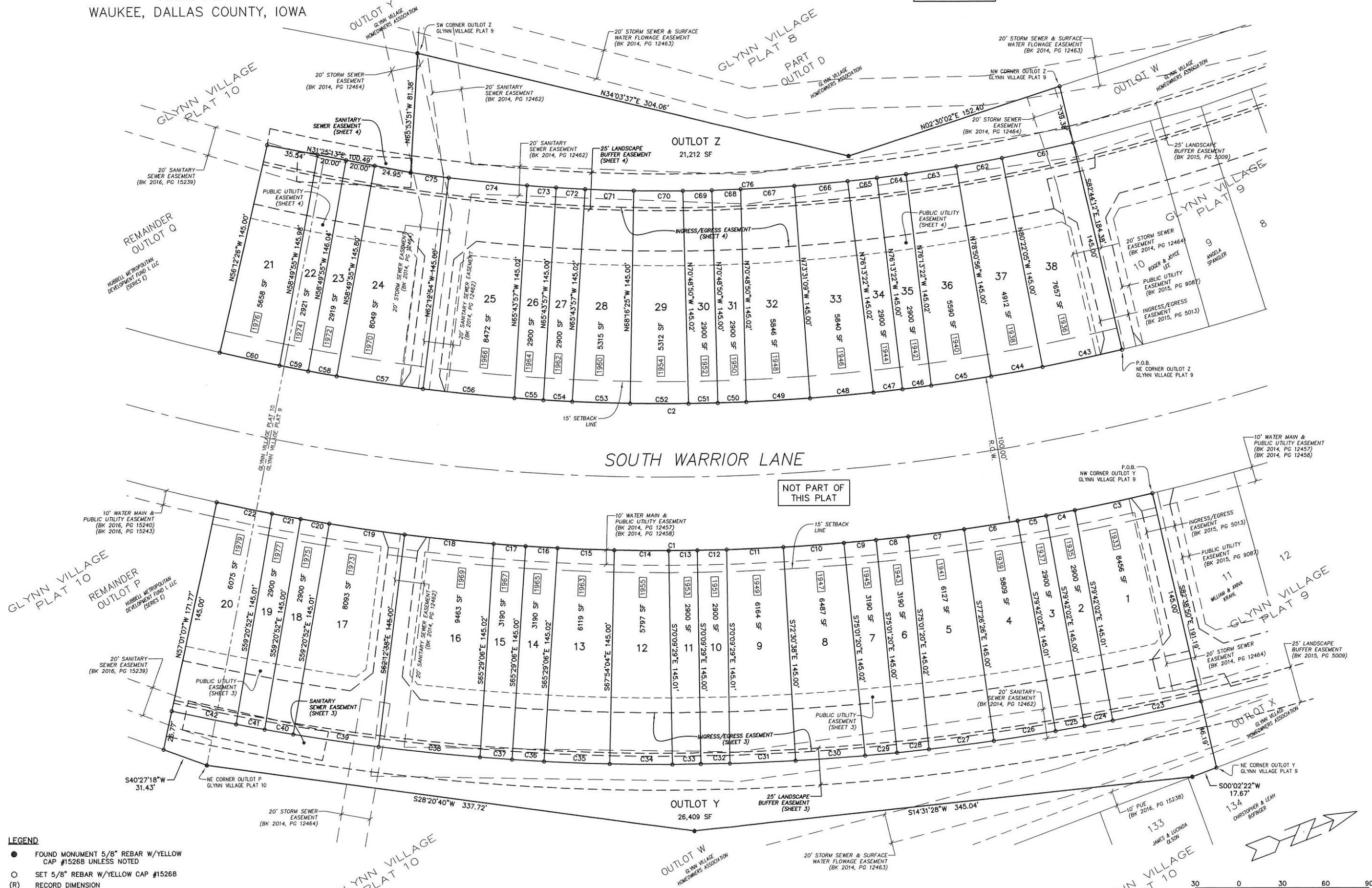


GLYNN VILLAGE PLAT II

FINAL PLAT
WAUKEE, DALLAS COUNTY, IOWA

SEE SHEET 1
FOR CURVE DATA



- LEGEND**
- FOUND MONUMENT 5/8" REBAR W/YELLOW CAP #15268 UNLESS NOTED
 - SET 5/8" REBAR W/YELLOW CAP #15268
 - (R) RECORD DIMENSION
 - (M) MEASURED DIMENSION
 - R.O.W. RIGHT-OF-WAY
 - 1234 ADDRESS NUMBER

GLYNN VILLAGE PLAT II

SCALE:	1" = 30'
DESIGNED BY:	DJS
CHECKED BY:	DFR
DATE:	9/25/2017
FIELD BOOK:	16-099FP_R1.DWG
SHEET	2 OF 4
FILE NO.:	16-099

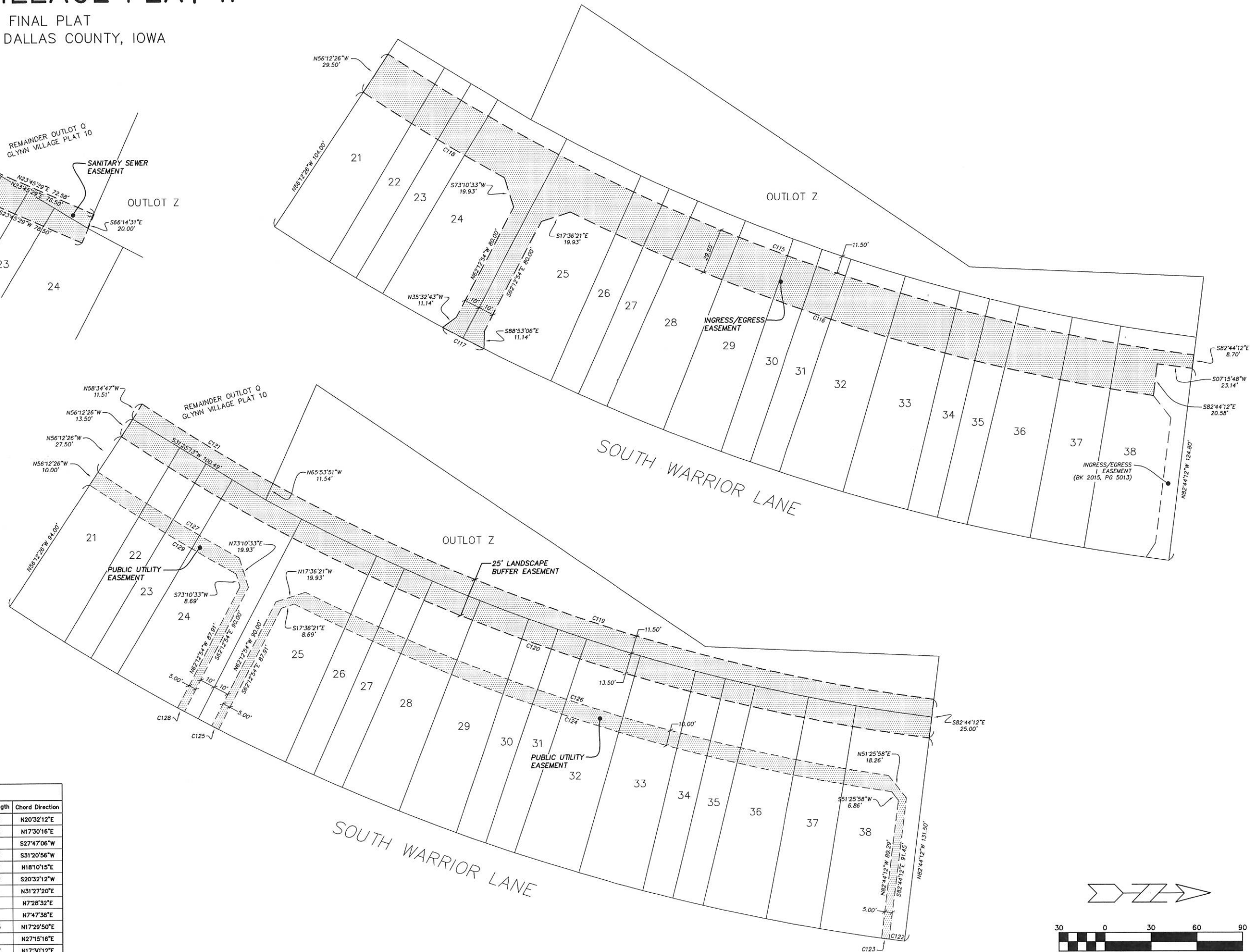
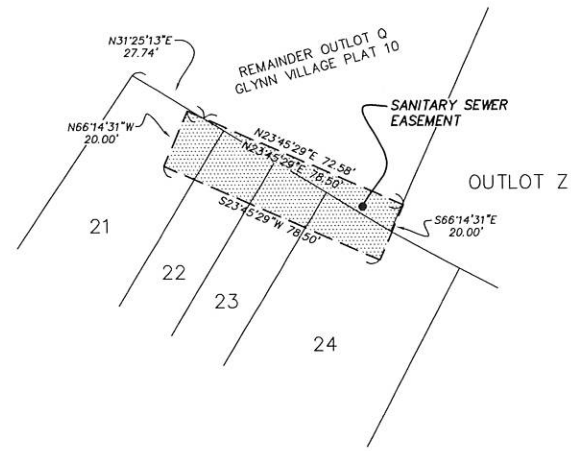
LOCATION:	
FOR:	
DATE:	
REVISION:	
NO.:	

FRG
Engineering Resource Group, Inc.
Engineers and Surveyors
2413 GRAND AVENUE
DES MOINES, IOWA 50312
(515) 288-4823

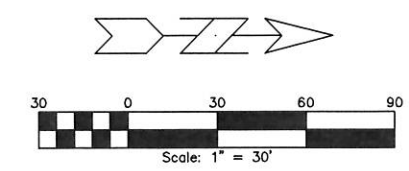
16-099

GLYNN VILLAGE PLAT II

FINAL PLAT
WAUKEE, DALLAS COUNTY, IOWA



Curve Table					
Curve #	Length	Radius	Delta	Chord Length	Chord Direction
C115	563.63	1216.50	26°32'47"	558.60	N20°32'12"E
C116	399.13	1246.00	18°21'13"	397.43	N17°30'16"E
C117	30.00	1350.00	1°16'24"	30.00	S27°47'06"W
C118	107.01	1246.00	4°55'15"	106.98	S31°20'56"W
C119	454.41	1193.50	21°48'52"	451.67	N18°10'15"E
C120	564.56	1218.50	26°32'47"	559.52	S20°32'12"W
C121	99.05	1193.50	4°45'18"	99.02	N31°27'20"E
C122	10.00	1350.00	0°25'28"	10.00	N7°28'32"E
C123	5.00	1350.00	0°12'44"	5.00	N7°47'38"E
C124	408.83	1256.00	18°39'00"	407.03	N17°29'50"E
C125	5.00	1350.00	0°12'44"	5.00	N27°15'16"E
C126	399.18	1246.00	18°21'21"	397.47	N17°30'12"E
C127	107.01	1246.00	4°55'15"	106.98	N31°20'56"E
C128	5.00	1350.00	0°12'44"	5.00	N28°18'56"E
C129	110.96	1256.00	5°03'42"	110.92	S31°16'42"W



GLYNN VILLAGE PLAT II

DESIGNED BY:	DJS	SCALE:	1" = 30'
CHECKED BY:	DFR	DWG:	16-099FP_L1.DWG
DATE:	9/25/2017	FIELD BOOK:	
FILE NO.:	16-099	NO.	
SHEET 4 OF 4		REVISION	
		DATE	
		BY	
		FOR	
		LOCATION:	

ERG
Engineering Resource Group, Inc.
Engineers and Surveyors
2413 GRAND AVENUE
DES MOINES, IOWA 50312
(515) 288-4823