

FILED
900K 47L PAGE 8/1
92 OCT -9 AM 8:58
CAROL L. OLIVER
COUNTY RECORDER
DALLAS CO. IOWA

FINAL PLAT COUNTRY CLUB WOODS

Examined for registration
City of Clive, Iowa
City Clerk

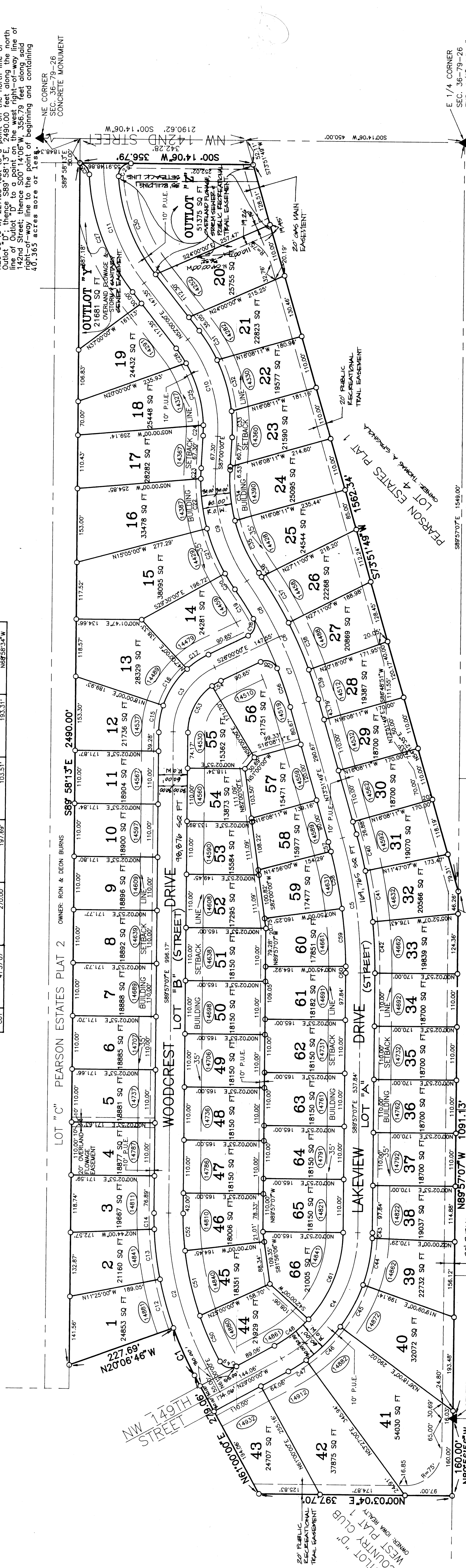
CURVE DATA

DELTA	RADIUS	ARC	TANGENT	CHORD	CHORD BEARING
C1	685.314	50.62	106.92	106.92	N85°26'37"E
C2	292.253	33.41	50.62	50.62	N85°26'37"E
C3	635.707	167.43	158.87	158.87	N85°26'37"E
C4	697.570	319.14	318.54	318.54	N85°26'37"E
C5	1611.104	1000.00	282.47	282.47	N85°26'37"E
C6	1851.189	800.00	278.85	278.85	N85°26'37"E
C7	680.000	146.33	73.35	73.35	N85°26'37"E
C8	680.000	146.33	73.35	73.35	N85°26'37"E
C9	387.000	370.00	24.39	24.39	N85°26'37"E
C10	411.000	300.00	211.12	211.12	N85°26'37"E
C11	387.000	268.93	136.65	136.65	N85°26'37"E
C12	680.000	104.72	52.46	52.46	N85°26'37"E
C13	680.000	104.72	52.46	52.46	N85°26'37"E
C14	680.000	104.72	52.46	52.46	N85°26'37"E
C15	180.000	33.50	16.75	16.75	N85°26'37"E
C16	180.000	33.50	16.75	16.75	N85°26'37"E
C17	1700.000	53.41	26.90	26.90	N85°26'37"E
C18	935.801	41.00	26.79	26.79	N85°26'37"E
C19	650.000	72.03	36.04	36.04	N85°26'37"E
C20	650.000	38.40	19.21	19.21	N85°26'37"E
C21	650.000	100.38	50.39	50.39	N85°26'37"E
C22	1458.000	21.98	10.98	10.98	N85°26'37"E
C23	3308.54	21.63	10.82	10.82	N85°26'37"E
C24	270.000	134.57	66.71	66.71	N85°26'37"E
C25	270.000	134.57	66.71	66.71	N85°26'37"E
C26	270.000	37.01	18.53	18.53	N85°26'37"E
C27	430.000	268.90	136.79	136.79	N85°26'37"E
C28	874.200	29.49	14.46	14.46	N85°26'37"E
C29	94.097	20.00	10.00	10.00	N85°26'37"E
C30	34.044	220.08	113.40	113.40	N85°26'37"E

DELTA	RADIUS	ARC	TANGENT	CHORD	CHORD BEARING
C31	1222.227	330.00	71.27	71.13	N58°11'11"E
C32	1911.118	330.00	110.52	110.00	N72°58'06"E
C33	54.36	330.00	27.24	54.30	N81°16'52"E
C34	1751.108	330.00	106.51	106.51	N84°04'27"E
C35	2008.54	340.00	119.86	119.77	N85°12'02"E
C36	007.387	880.00	4.88	4.88	N85°12'02"E
C37	071.051	880.00	55.22	110.22	N85°12'02"E
C38	0653.700	880.00	105.72	105.66	N85°12'02"E
C39	0409.49	880.00	63.95	63.93	N85°12'02"E
C40	0555.00	880.00	78.22	78.20	N85°12'02"E
C41	0555.00	880.00	78.22	78.22	N85°12'02"E
C42	0555.00	880.00	78.22	78.22	N85°12'02"E
C43	17.097	330.00	11.24	11.24	N85°12'02"E
C44	17.097	330.00	11.24	11.24	N85°12'02"E
C45	17.097	330.00	11.24	11.24	N85°12'02"E
C46	17.097	330.00	11.24	11.24	N85°12'02"E
C47	17.097	330.00	11.24	11.24	N85°12'02"E
C48	17.097	330.00	11.24	11.24	N85°12'02"E
C49	97.000	25.00	25.00	25.00	N85°12'02"E
C50	0924.21	630.00	103.42	103.31	N85°12'02"E
C51	12.353	630.00	68.52	68.52	N85°12'02"E
C52	0702.57	630.00	77.45	77.45	N85°12'02"E
C53	53.146	630.00	60.84	60.84	N85°12'02"E
C54	83.580	630.00	10.89	10.89	N85°12'02"E
C55	83.580	630.00	10.89	10.89	N85°12'02"E
C56	0553.48	820.00	84.39	84.39	N85°12'02"E
C57	0112.11	820.00	20.37	20.37	N85°12'02"E
C58	0709.00	970.00	120.20	120.12	N85°12'02"E
C59	0709.00	970.00	119.92	119.84	N85°12'02"E
C60	0709.00	970.00	119.92	119.84	N85°12'02"E
C61	4152.707	270.00	197.89	193.31	N85°12'02"E

LEGAL DESCRIPTION

A parcel of land in Outlot "D", Country Club West Plat 1, an official plat, City of Clive, Dallas County, Iowa, that is more particularly described as follows:
Commencing at the southeast corner of Outlot "D", thence S73° 51'49" W, 1562.34 feet along the south line of Outlot "D" to a point, thence N89° 57'07" W, 1091.13 feet along the south line of Outlot "D" to a point, thence S89° 58'13" E, 2490.00 feet along the south line of Outlot "D" to a point, thence N00° 03'04" E, 397.70 feet to a point, thence N 61° 00'00" E, 279.06 feet to a point of curvature; thence S89° 58'13" E, 2490.00 feet along the north line of Outlot "D" to a point, thence S89° 58'13" E, 2490.00 feet along the north line of Outlot "D" to a point on the west right-of-way line of 142nd Street; thence S00° 14'06" W, 356.79 feet along said line to the point of beginning and containing 40.365 acres more or less.



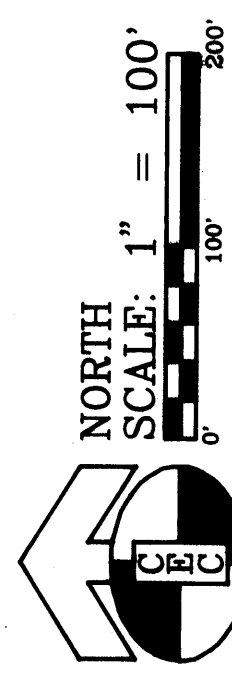
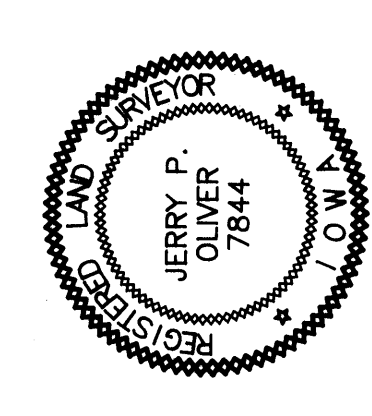
LEGEND

- PLAT BOUNDARY
- SECTION CORNER
- FOUND CORNER
- SET CORNER W/ 5/8" I.R. CAP #7844
- IRON ROD
- GAS PIPE
- DEEDED DISTANCE
- MEASURED DISTANCE
- PREVIOUSLY RECORDED DISTANCE
- PUBLIC UTILITY EASEMENT
- ADDRESS

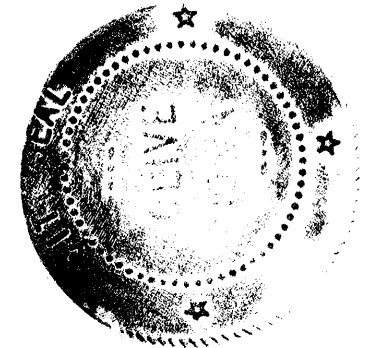
CERTIFICATION

I HEREBY CERTIFY THAT THIS LAND SURVEYING DOCUMENT WAS PREPARED BY ME OR UNDER MY DIRECT SUPERVISION AND THAT I AM A DULY REGISTERED LAND SURVEYOR UNDER THE LAWS OF THE STATE OF IOWA.

BY: JERRY P. OLIVER, IOWA REG. NO. 1044
DATE: 9/29/12
MY REGISTRATION EXPIRES DECEMBER 31, 1912



CIVIL ENGINEERING CONSULTANTS, INC.
2400 86TH STREET #12 DES MOINES IOWA 515.276.4884
E-2486



APPROVED BY THE CLIVE CITY COUNCIL,
CITY OF CLIVE, POLK COUNTY, IOWA AT A
MEETING ON 10-1-12
Maeyne S. Roberts
City Clerk