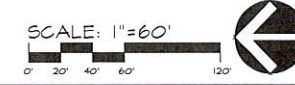
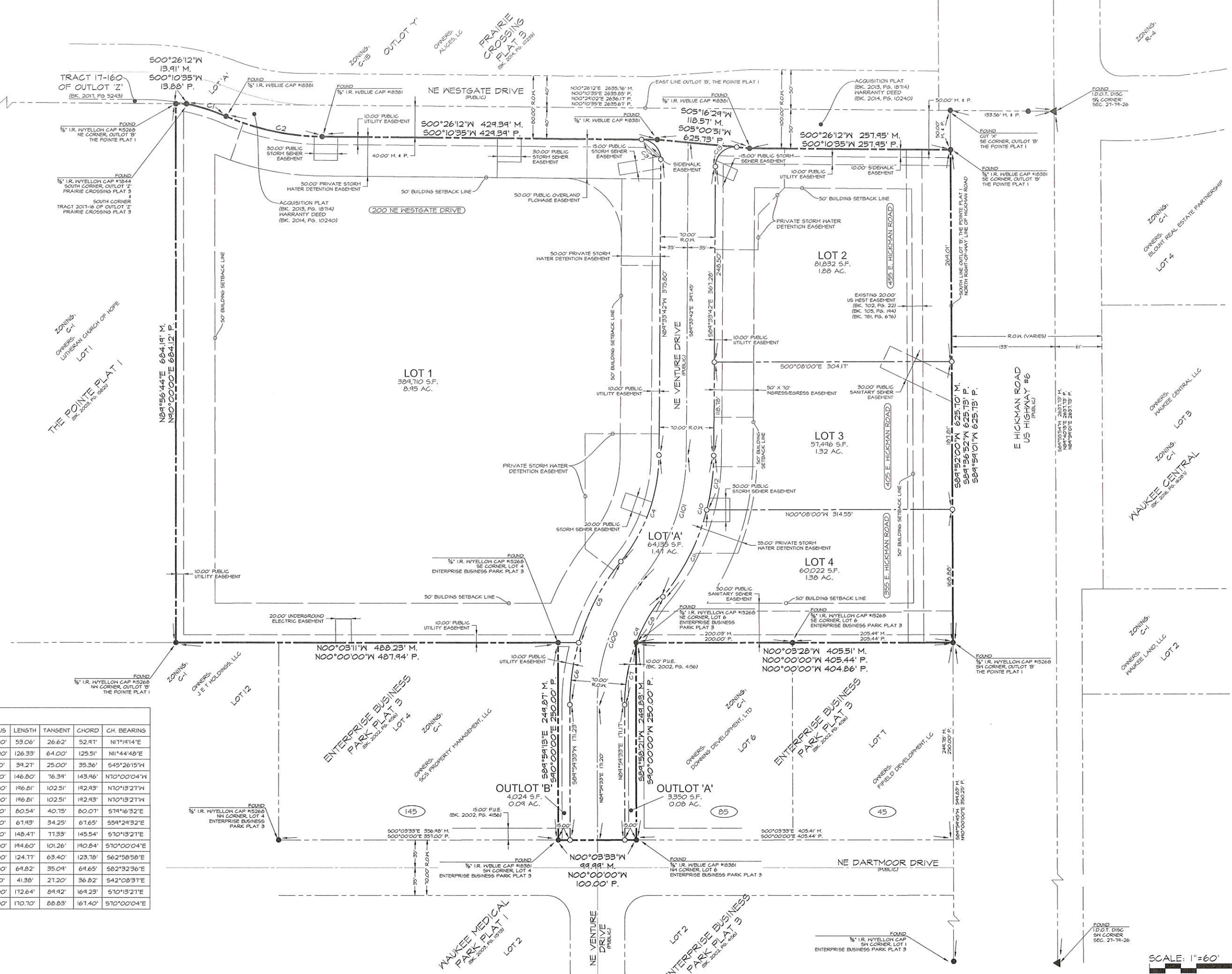


CURVE DATA

CURVE	DELTA	RADIUS	LENGTH	TANGENT	CHORD	CH. BEARING
C1	11°28'20"	265.00'	53.06'	26.62'	52.91'	N71°19'14"E
C2	22°37'12"	320.00'	126.33'	64.00'	125.51'	N11°44'48"E
C3	90°00'06"	25.00'	34.21'	25.00'	35.36'	S45°26'15"W
C4	34°07'16"	215.00'	146.80'	76.34'	143.96'	N70°00'04"W
C5	34°34'01"	285.00'	196.81'	102.51'	192.43'	N70°13'27"W
C6	34°34'01"	285.00'	196.81'	102.51'	192.43'	N70°13'27"W
C7	21°27'44"	215.00'	80.54'	40.75'	80.07'	S74°16'32"E
C8	18°06'12"	215.00'	61.93'	34.25'	67.65'	S54°24'32"E
C9	34°34'01"	215.00'	148.41'	77.33'	145.54'	S70°13'27"E
C10	34°07'16"	285.00'	194.60'	101.26'	190.84'	S70°00'04"E
C11	25°05'04"	285.00'	124.77'	63.40'	123.78'	S62°58'58"E
C12	14°02'11"	285.00'	64.82'	35.04'	64.65'	S82°32'36"E
C13	44°50'10"	25.00'	41.38'	27.20'	36.82'	S42°08'31"E
C100	34°34'01"	250.00'	172.64'	84.92'	164.23'	S70°13'27"E
C101	34°07'16"	250.00'	170.70'	88.83'	167.40'	S70°00'04"E



FRIDLEY PALMS PLAT I
 WAUKEE, IOWA
FINAL PLAT

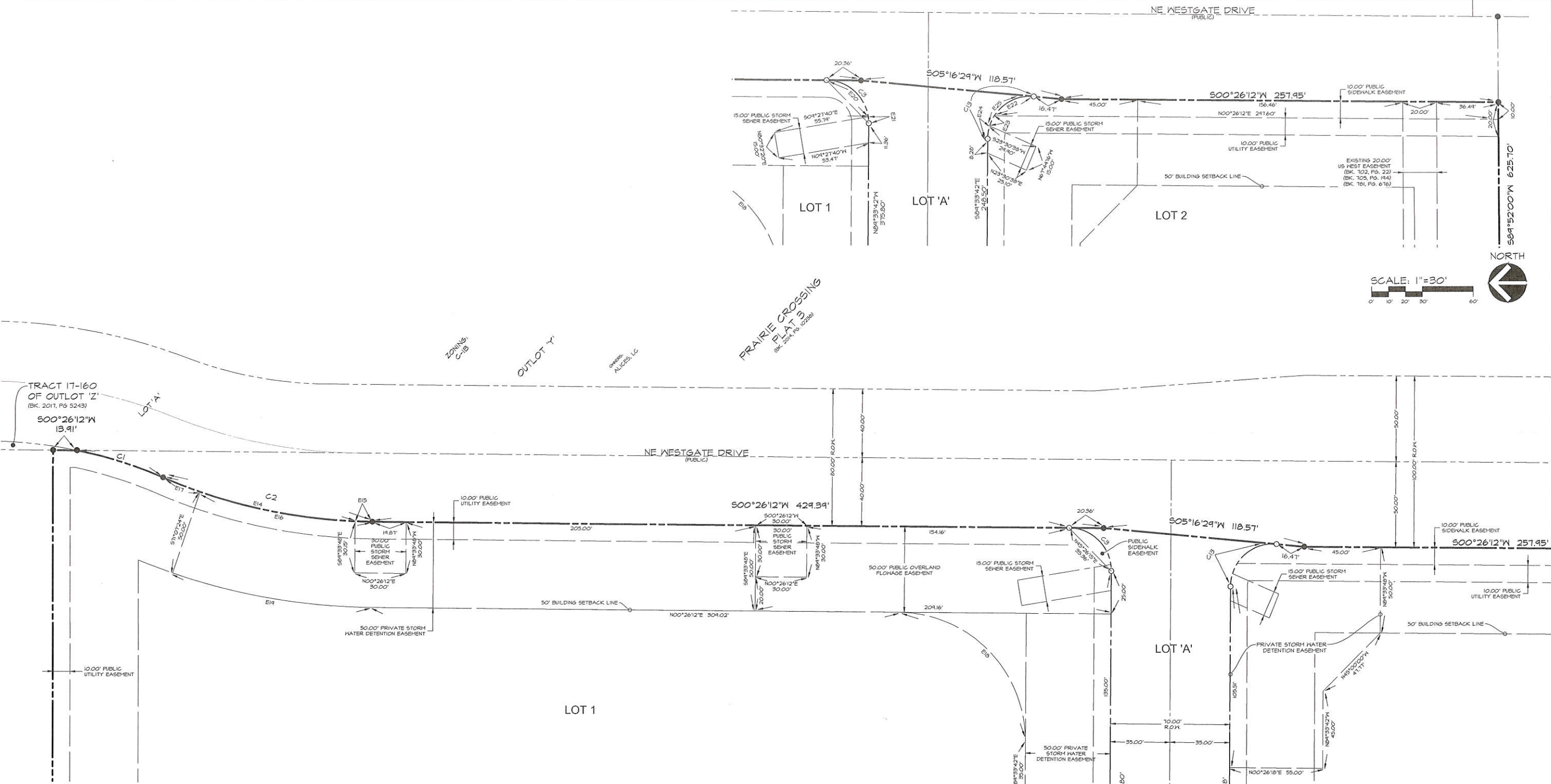
CEC
 Civil Engineering Consultants, Inc.
 2400 86th Street, Unit 12 - Des Moines, Iowa 50322
 515.276.4884 - Fax: 515.276.7084 - mail@cecinc.com

DATE: MAR. 14, 2016
 JAN. 23, 2016
 JAN. 09, 2011
 DEC. 12, 2011
 APR. 11, 2016

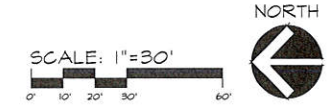
DESIGNED BY: JAG
 DRAWN BY: JAG

SHEET
02
 OF
 4

E-7533



CURVE	DELTA	RADIUS	LENGTH	TANGENT	CHORD	CH. BEARING
C1	11°28'20"	265.00'	53.06'	26.62'	52.91'	S11°18'14"W
C2	22°37'12"	320.00'	126.33'	64.00'	125.51'	N11°44'48"E
C3	90°00'06"	25.00'	39.27'	25.00'	35.36'	S45°26'15"W
C13	94°50'10"	25.00'	41.38'	21.20'	36.82'	S42°08'37"E
E14	20°48'22"	320.00'	116.20'	58.75'	115.51'	S12°34'13"W
E15	1°48'49"	320.00'	10.13'	5.07'	10.13'	S01°20'37"W
E16	16°37'34"	320.00'	42.86'	46.76'	42.53'	S10°33'44"W
E17	4°10'48"	320.00'	23.35'	11.68'	23.34'	S20°58'00"W
E18	90°00'06"	15.00'	11.78'	75.00'	106.07'	N45°26'15"E
E19	18°26'23"	310.00'	119.08'	60.06'	118.57'	N04°34'24"E
E20	81°12'50"	25.00'	35.44'	21.43'	32.54'	S41°02'37"W
E21	8°47'16"	25.00'	3.83'	1.92'	3.83'	S86°02'40"W
E22	62°05'31"	25.00'	21.09'	15.05'	25.71'	N25°46'20"W
E23	15°12'43"	25.00'	6.64'	3.34'	6.62'	N64°25'30"W
E24	17°31'51"	25.00'	7.65'	3.85'	7.62'	S80°47'46"E
E25	71°18'19"	25.00'	33.73'	19.99'	31.23'	N33°22'41"W



FRIDLEY PALMS PLAT 1
WAUKEE, IOWA
EASEMENT DIMENSION - EAST

SHEET
OF 4

E-1533

DATE: MAR. 14, 2016
JAN. 23, 2016
JAN. 09, 2017
DEC. 12, 2017
APR. 11, 2016
JAN. 16, 2016

DESIGNED BY: JAG
DRAWN BY: JAG

Civil Engineering Consultants, Inc.
2400 86th Street, Unit 12 · Des Moines, Iowa 50322
515.276.4884 · Fax: 515.276.7084 · mail@cecinc.com

CEC

LOT 1

LOT 3

LOT 'A'

LOT 4

LOT 4

LOT 6

E HICKMAN ROAD
(PUBLIC)

CURVE	DELTA	RADIUS	LENGTH	TANGENT	CHORD	CH. BEARING
C4	39°07'16"	215.00'	146.80'	76.34'	143.96'	N70°00'04"W
C5	39°34'01"	285.00'	196.81'	102.51'	192.93'	S70°13'21"E
C8	18°06'12"	215.00'	67.43'	34.25'	67.65'	S54°29'32"E
C10	39°07'16"	285.00'	194.60'	101.26'	190.84'	S70°00'04"E
E20	20°40'00"	285.00'	102.80'	51.96'	102.24'	S63°39'20"E
E21	16°08'25"	215.00'	60.57'	30.48'	60.37'	S81°29'29"E
E22	5°19'54"	215.00'	20.01'	10.01'	20.00'	N70°45'19"W
E23	17°38'56"	215.00'	66.23'	33.38'	65.97'	S59°15'54"E
E24	2°52'54"	285.00'	14.33'	7.17'	14.33'	N51°52'53"W
E26	11°49'56"	218.83'	45.19'	22.68'	45.11'	S62°31'19"E
E27	6°03'35"	215.00'	22.74'	11.38'	22.73'	S53°28'14"E
E28	13°15'26"	285.00'	65.94'	33.12'	65.80'	N51°04'09"W
E29	11°44'38"	285.00'	58.83'	29.52'	58.73'	S69°36'41"E
E30	3°05'46"	285.00'	15.40'	7.70'	15.40'	S71°04'23"E
E31	8°07'01"	285.00'	40.37'	20.22'	40.34'	S82°40'46"E
E32	19°03'57"	340.00'	113.14'	57.10'	112.62'	N77°45'17"W
E33	3°08'25"	285.00'	15.62'	7.81'	15.62'	S73°57'18"E
E34	11°12'46"	285.00'	55.77'	27.98'	55.69'	S81°07'53"E
E35	2°44'25"	285.00'	14.05'	7.02'	14.04'	N88°08'59"W

ZONING: C-1
ENTERPRISE BUSINESS
PARK PLAT 3
(BK. 2002, PG. 4156)

OWNERS:
S25 PROPERTY MANAGEMENT, LLC

OWNERS:
DOWNING DEVELOPMENT, LTD

ZONING: C-1
ENTERPRISE BUSINESS
PARK PLAT 3
(BK. 2002, PG. 4156)

OWNERS:
FIELD DEVELOPMENT, LC



FRIDLEY PALMS PLAT 1
WAUKEE, IOWA

SHEET
04
OF 4

EASEMENT DIMENSION - WEST

DATE:	MAR. 14, 2018
DESIGNED BY:	JAG
DRAWN BY:	JAG
DATE OF SURVEY:	DEC. 12, 2017
DESIGNED BY:	JAG
DRAWN BY:	JAG
DATE:	JAN. 03, 2017
DESIGNED BY:	JAG
DRAWN BY:	JAG
DATE:	JAN. 23, 2016
DESIGNED BY:	JAG
DRAWN BY:	JAG



Civil Engineering Consultants, Inc.
2400 86th Street, Unit 12, Des Moines, Iowa 50322
515.276.4884 · Fax: 515.276.7084 · mail@cecinc.com