

LOT 2
THE CROSSING AT
ALICE'S ROAD PLAT 4
(BK. 2001, PG. 1674)

LOT 1
THE CROSSING AT
ALICE'S ROAD PLAT 4
(BK. 2001, PG. 1674)

UNIVERSITY OF IOWA COMMUNITY CREDIT
1415 W. UNIVERSITY AVENUE
DES MOINES, IOWA 50319-1500
PH: 515.281.2222 FAX: 515.281.2222

UNIVERSITY OF IOWA COMMUNITY CREDIT
1415 W. UNIVERSITY AVENUE
DES MOINES, IOWA 50319-1500
PH: 515.281.2222 FAX: 515.281.2222

HICKMAN ROAD (Hwy. #6)
(PUBLIC - ACCESS CONTROLLED) - (R.O.A. VARIES)

ROW VARIES

1660' N1020' NW NW 1/4 EX
APPRX 1' STRIP ON N &
EX DIAS PG ON N

Atlantic Betting Company
4 E 2nd St PO Box 10
Atlantic IA 50022

PARCEL 18B
SEC 34-19-26
(BK. 2001, PG. 2868)

EASMENT IF FUTURE LOTS
ARE ADDED TO THIS
PLAT (SEE NOTES, PL. 2028)

Civil Engineering Consultants, Inc.
2400 86th Street, Unit 12, Des Moines, Iowa 50322
515.276.4884 Fax: 515.276.7084 mail@cecinc.com

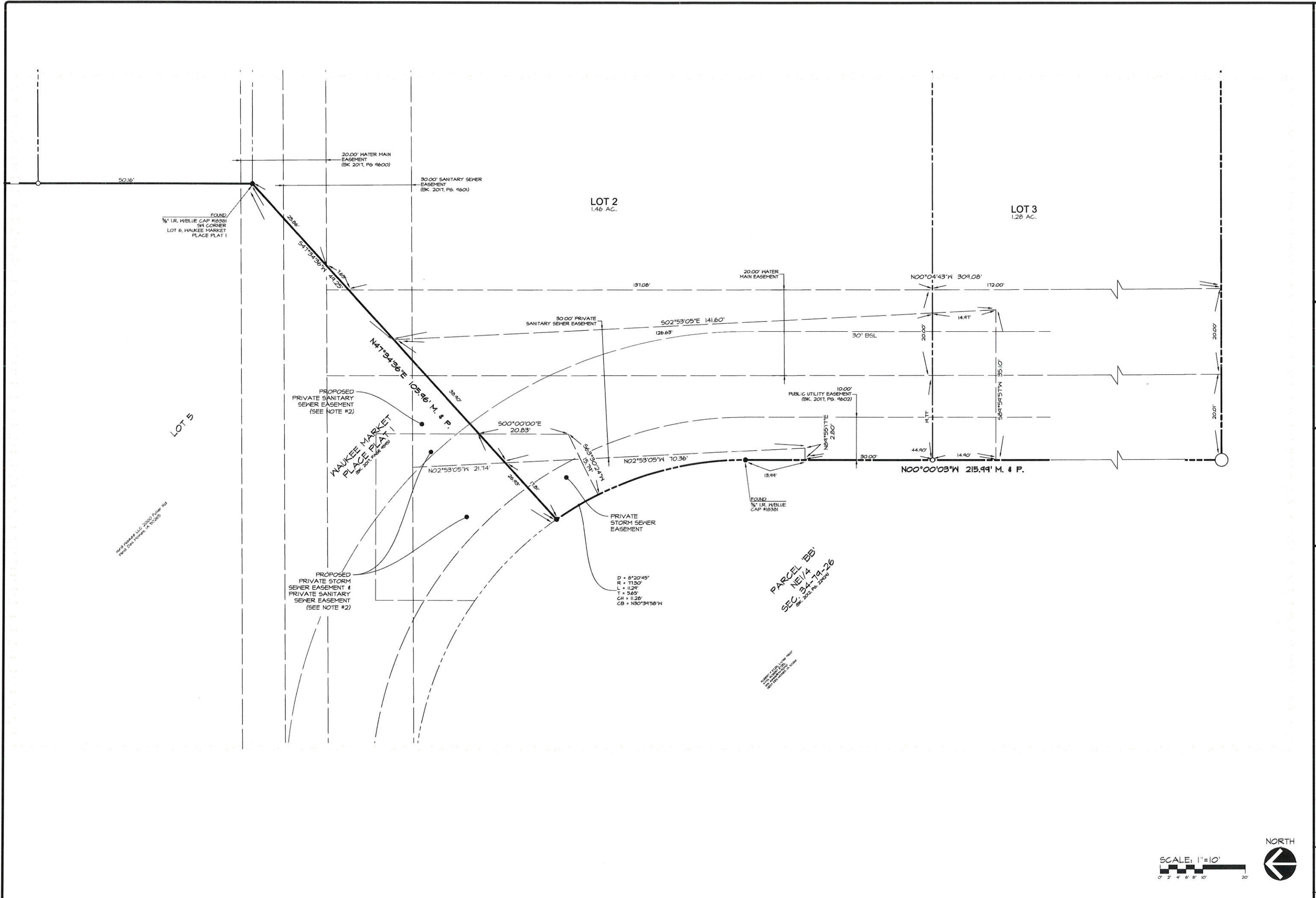


DATE:	AUG. 31, 2016	REVISIONS	COMMENTS
		1	
		2	
		3	
		4	
		5	
		6	

DATE OF SURVEY: JUL. 11, 2016
DESIGNED BY: ARP
DRAWN BY: MMA / JAS

WAUKEE MARKET PLACE PLAT 2
WAUKEE, IOWA
FINAL PLAT

SHEET
2
3
A-1101



Waukee Market LLC 2020, Polaris, Inc.
 All Other Rights Reserved

LOT 5

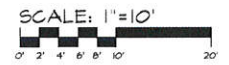
LOT 2
1.46 AC.

LOT 3
1.28 AC.

Waukee Market
 Place Plat 1
 (Bk. 2017, Pg. 988)

PARCEL 188
 NE 1/4
 SEC 34-19-26
 (Bk. 2017, Pg. 286)

D = 8'20.45"
 R = 71.50'
 L = 112.1'
 T = 5.65'
 C1 = 11.28'
 CB = N30°34'50"W



Civil Engineering Consultants, Inc.
 2400 86th Street, Unit 12, Des Moines, Iowa 50322
 515.276.4884 · Fax: 515.276.7084 · mail@cecinc.com

CEC

DATE:	REVISIONS	COMMENTS
AUG. 31, 2018	1	
	2	
	3	
	4	
	5	
	6	

DATE OF SURVEY: JUL 11, 2018
 DESIGNED BY: ARB
 DRAWN BY: MHA, JAG

WAUKEE MARKET PLACE PLAT 2
 WAUKEE, IOWA
EASEMENT DETAIL 'A'

A-1101