

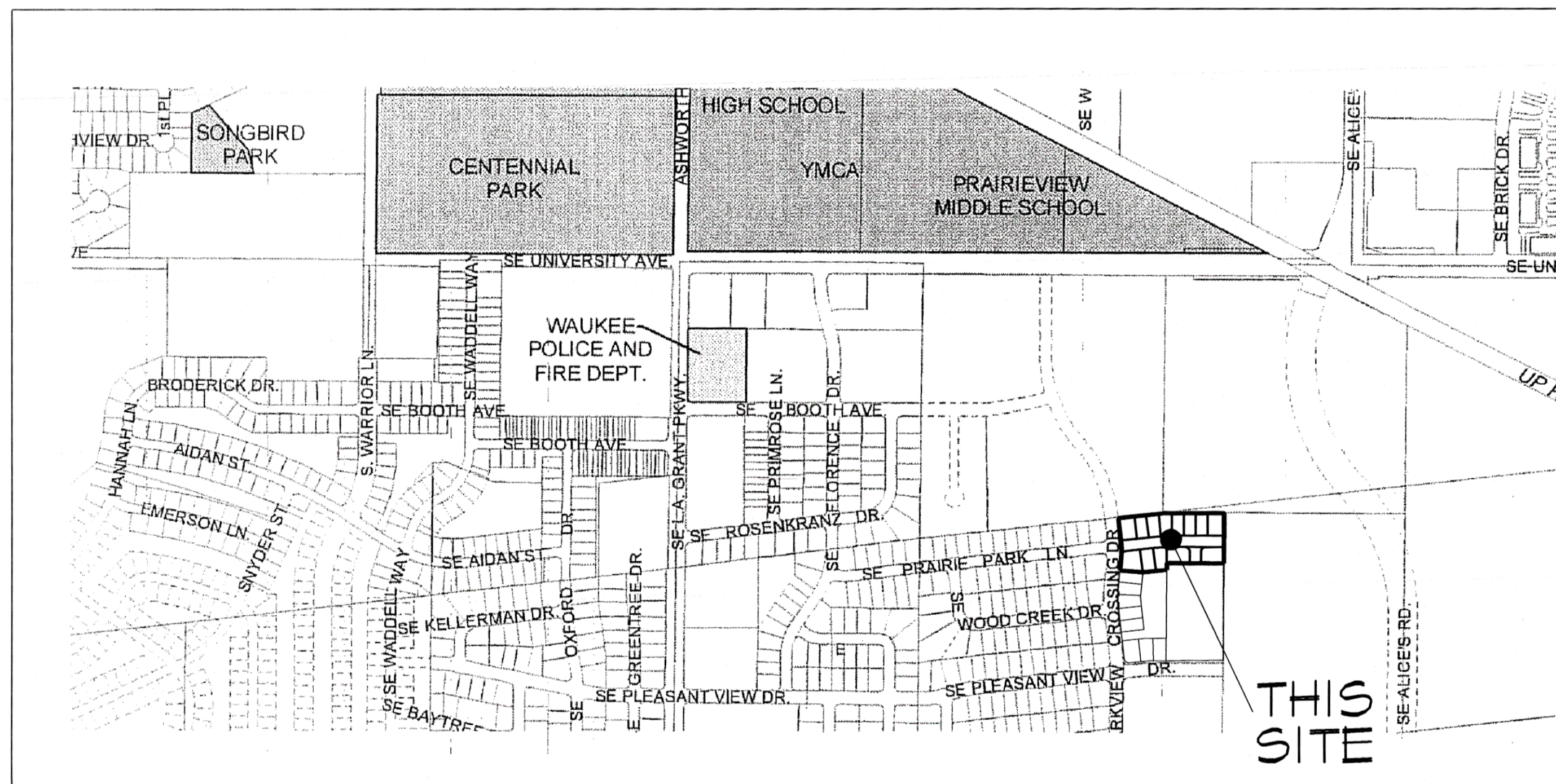
# ASBUILT

## CONSTRUCTION DRAWINGS

# PARKVIEW CROSSING

### PLAT 9 - PHASE TWO

JERRY'S HOMES, INC. - 3301 NW 106th CIRCLE - URBANDALE, IOWA 50322



VICINITY SKETCH NO SCALE

#### DRAWING INDEX

- 1 SANITARY SEWER
- 2 WATER PLAN
- 3 STORM SEWER
- 4 GRADING
- 5 PAVING

#### BENCHMARK

CITY OF WAUKEE BENCHMARK LOCATED ON THE BURY BOLT OF THE WATER HYDRANT LOCATED ON THE N.W. CORNER OF LOT 26, PARKVIEW CROSSING PLAT 6  
ELEVATION= 1025.46

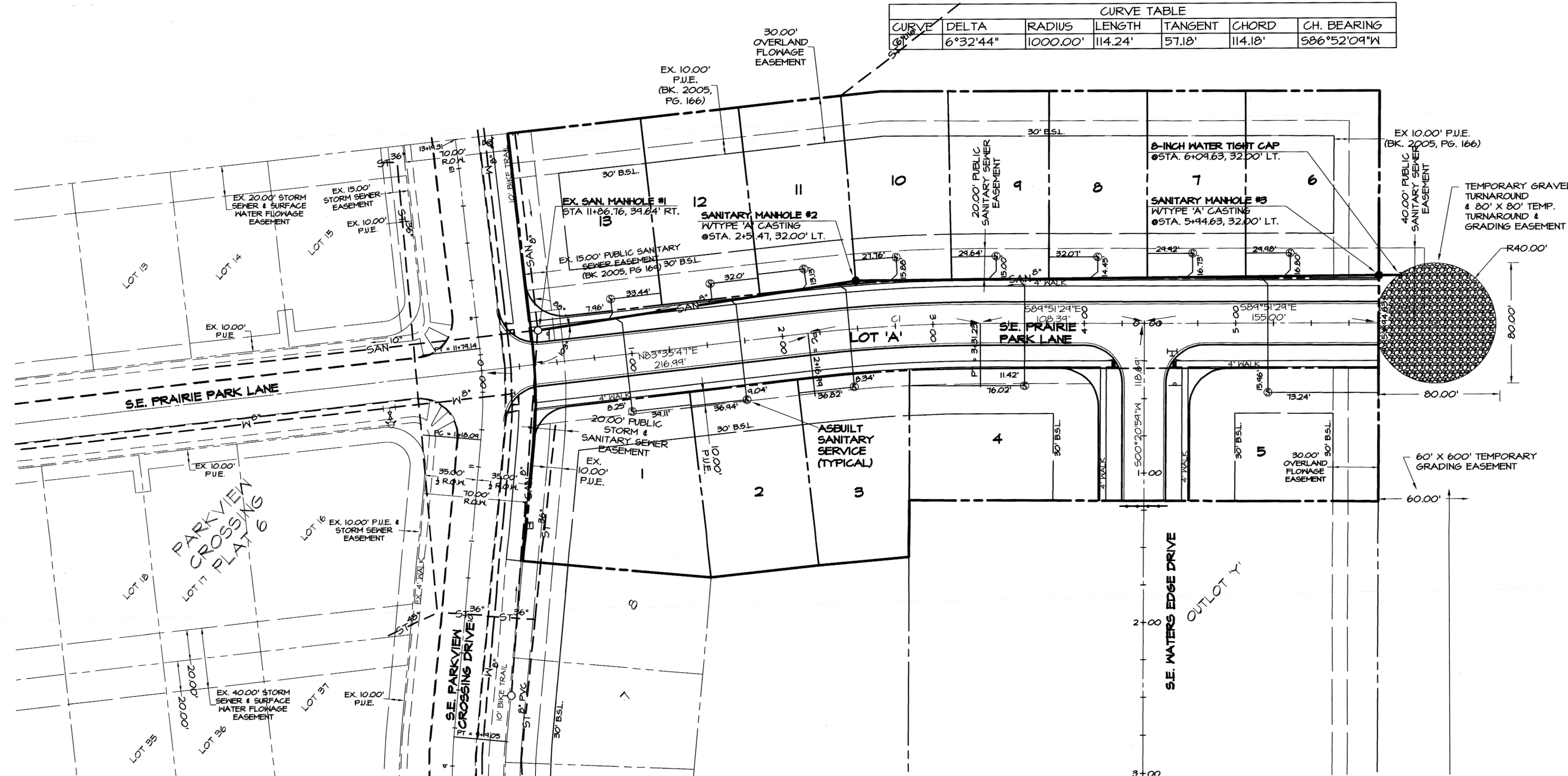
#### CERTIFICATION

	I HEREBY CERTIFY THAT THIS ENGINEERING DOCUMENT WAS PREPARED BY ME OR UNDER MY DIRECT PERSONAL SUPERVISION AND THAT I AM A DULY LICENSED PROFESSIONAL ENGINEER UNDER THE LAWS OF THE STATE OF IOWA.
	MELISSA M. HILLS 16023 DATE: <u>8-11-2011</u> MY LICENSE RENEWAL DATE IS DECEMBER 31, 2011 PAGES OR SHEETS COVERED BY THIS SEAL: SHEETS 1 - 5

CIVIL ENGINEERING CONSULTANTS, INC. 2400 86TH STREET, #12, DES MOINES, IOWA 50322

DATE: FEBRUARY 07, 2011  
 REVISION: FEBRUARY 21, 2011  
 MARCH 02, 2011  
 MARCH 16, 2011 (WATER SHEET ONLY)  
 ASBUILT: AUGUST 11, 2011

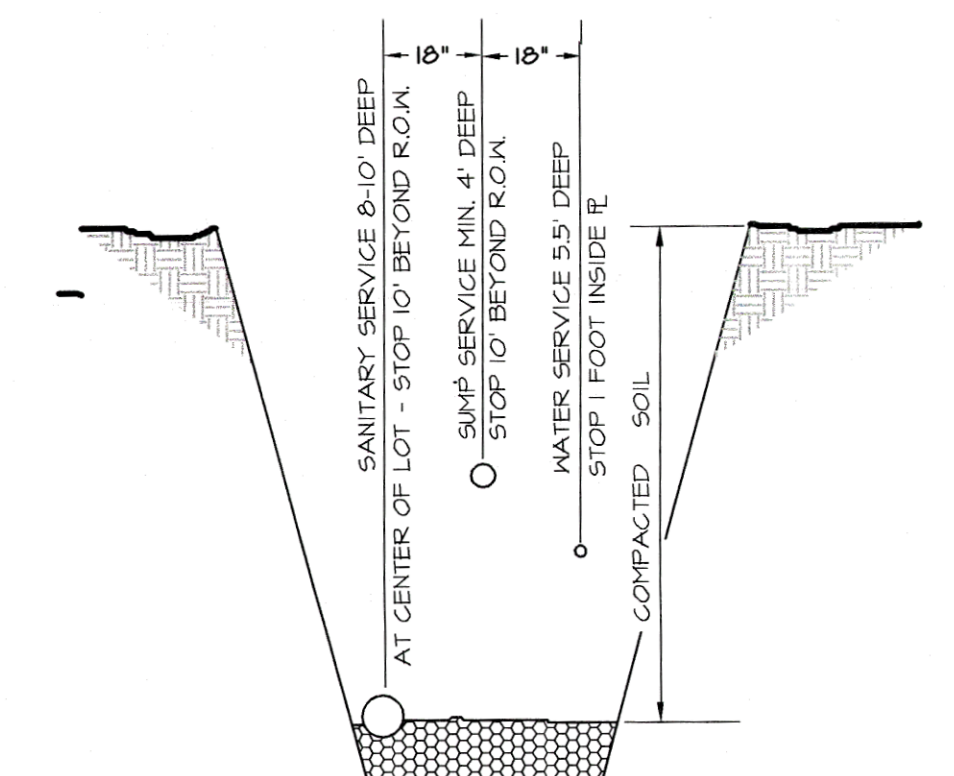
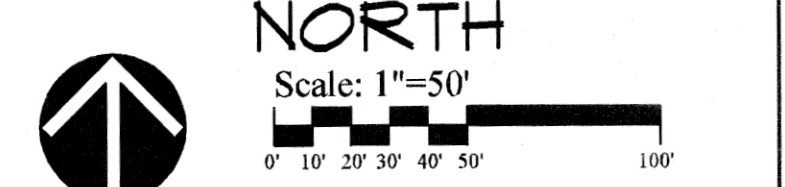
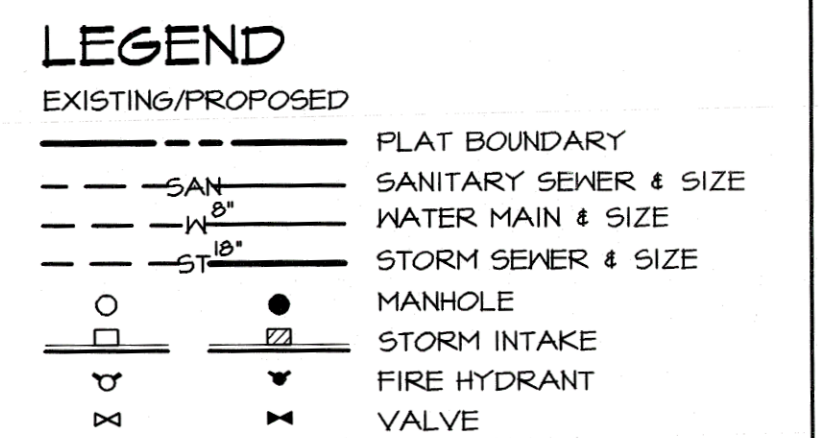
CURVE	DELTA	RADIUS	LENGTH	TANGENT	CHORD	CH. BEARING
6	6°32'44"	1000.00'	114.24'	57.18'	114.18'	S86°52'04"W



- NOTES**
- ALL CONSTRUCTION (PUBLIC & PRIVATE) SHALL BE IN ACCORDANCE WITH THE IOWA STANDARD SPECIFICATIONS FOR PUBLIC IMPROVEMENTS IN EFFECT AT THE TIME OF CONSTRUCTION. CURRENT SPECIFICATIONS ARE AVAILABLE ONLINE AT: [WWW.IOWAENGINEERS.COM/PDF/STANDARD\\_SPECIFICATIONS.pdf](http://WWW.IOWAENGINEERS.COM/PDF/STANDARD_SPECIFICATIONS.pdf)
  - CONTRACTOR SHALL ARRANGE FOR TESTING AND INSPECTION AND NOTIFY THE FOLLOWING AT LEAST ONE WEEK PRIOR TO BEGINNING CONSTRUCTION:
    - CITY OF WAKEE ENGINEERS OFFICE
    - JERRY'S HOMES, INC.
    - CIVIL ENGINEERING CONSULTANTS, INC.
    - IOWA ONE-CALL
  - THE LOCATION OF EXISTING FACILITIES AND APPURTENANCES SHOWN ON THIS PLAN ARE BASED ON AVAILABLE INFORMATION WITHOUT UNCOVERING AND MEASURING TO DETERMINE EXACT FACILITIES LOCATIONS. CIVIL ENGINEERING CONSULTANTS, INC. DOES NOT GUARANTEE THE LOCATION OF EXISTING FACILITIES AS SHOWN OR THAT ALL EXISTING FACILITIES ARE SHOWN. IT IS THE CONTRACTOR'S RESPONSIBILITY TO CONTACT ALL PUBLIC AND PRIVATE UTILITY PROVIDERS SERVING THIS AREA, AND IOWA ONE CALL, TO DETERMINE THE EXTENT AND PRECISE LOCATION OF EXISTING FACILITIES BEFORE CONSTRUCTION BEGINS.
  - CONTRACTOR SHALL PROTECT EXISTING ON-SITE FACILITIES FROM DAMAGE RESULTING FROM THE CONTRACTOR'S WORK. IF DAMAGE, BREAKAGE, INTERRUPTION OF SERVICE, ETC. OF EXISTING FACILITIES DOES OCCUR THE CONTRACTOR SHALL IMMEDIATELY CONTACT THE UTILITY'S OWNER.
  - CASTING TYPES ARE FROM SUDAS SPECS.
  - CONTRACTOR IS RESPONSIBLE FOR REPAIRING AND RECONNECTING ANY FARM TILE DAMAGED DURING CONSTRUCTION & FOR RECORDING THE LOCATION OF TILE.
  - WHEN CONNECTING TO ANY EXISTING MANHOLE, CORE DRILL MANHOLE & POUR WELL DEFINED INVERT. CONNECTION SHALL BE CONSTRUCTED WITH A WATERTIGHT SEAL. CONTRACTOR SHALL FIELD VERIFY THE INVERT INTO EXISTING MANHOLE #1 TO DETERMINE IF THE PROPOSED FLOW LINE NEEDS TO BE RAISED IN ORDER TO POUR A WELL DEFINED INVERT.
  - CONTRACTOR SHALL BE RESPONSIBLE FOR RECORDING ASBUILT LOCATIONS OF ALL SANITARY SEWER SERVICES & PROVIDING THIS INFORMATION TO THE ENGINEER.

**QUANTITIES**

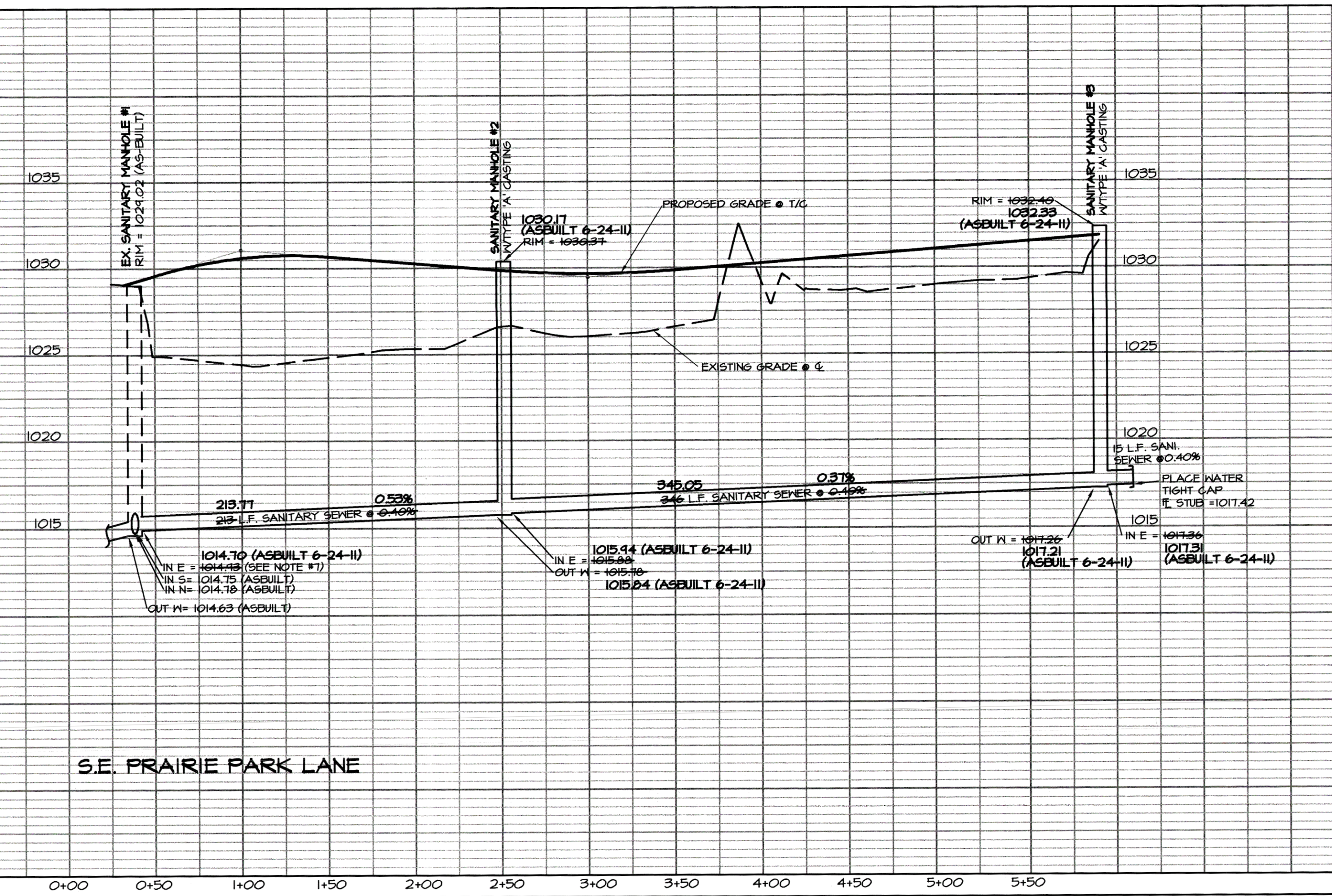
514 L.F.	8-INCH SANITARY SEWER
2 EA.	TYPE 'A' MANHOLE
15 EA.	SERVICES
1 EA.	8-INCH WATER TIGHT CAP



SANITARY & SUMP SERVICES SHALL BE MARKED AT THE END OF PIPE WITH A 2X4 TO THE SURFACE & A STEEL FENCE POST. PLACE ONE 6 FT. STEEL POST BURIED 3 FT. AT WATER CURB. BOX COLOR MARKING OF SERVICES SHALL BE RED FOR SANITARY, GREEN FOR SUMPS AND BLUE FOR WATER.

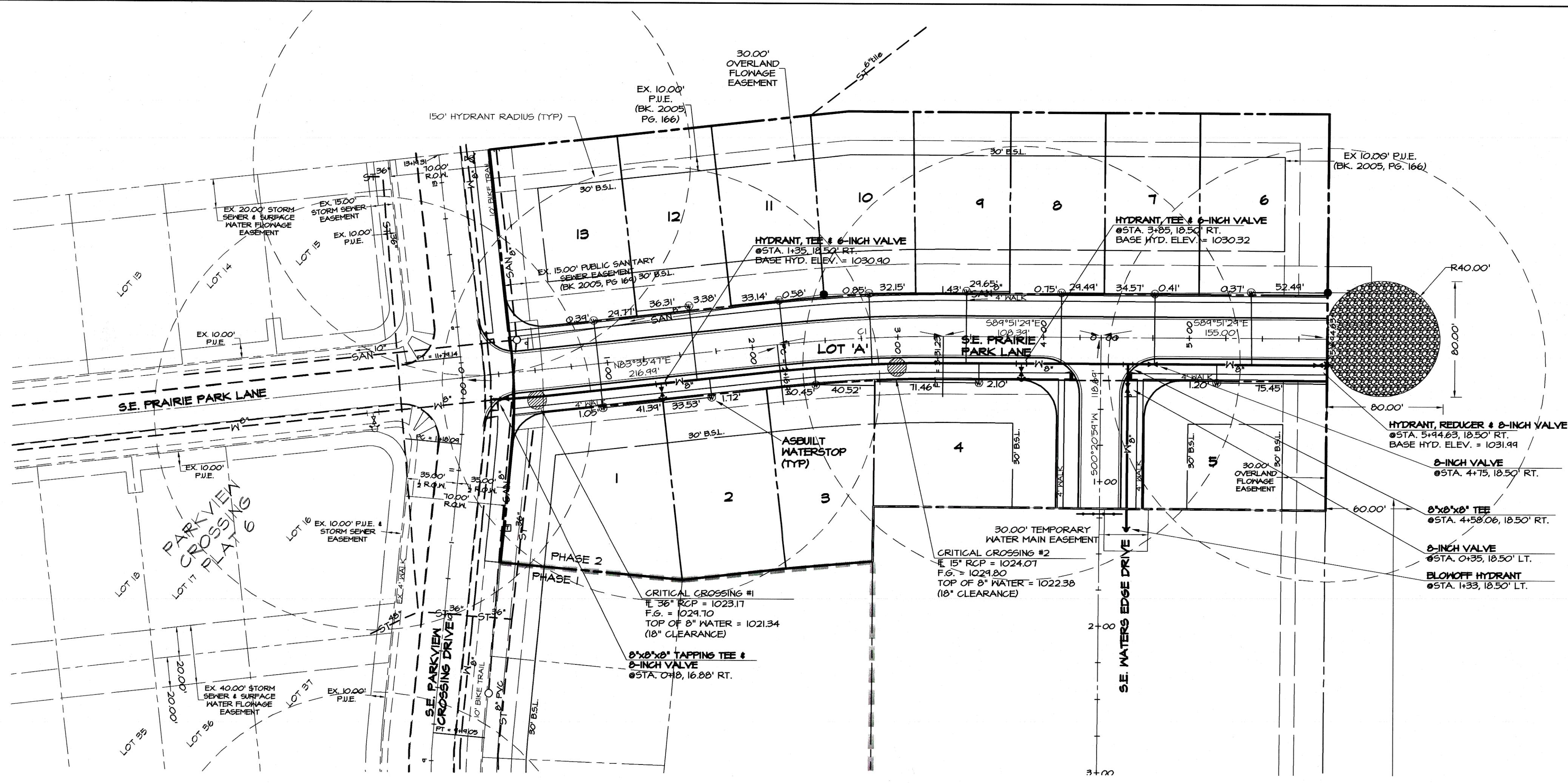
**SERVICE LOCATION DETAIL (TYP.)**  
(SEE EACH LOT ON SPECIFIC PLAN)

NO SCALE



SCALE	SHEET
5'	1
DATE: 02-01-2011	OF 5
REVISION: 02-21-2011	
ASBUILT: 08-11-2011	

PLAN & PROFILE - SANITARY SEWER - SE PRAIRIE PARK LANE - PARKVIEN CROSSING PLAT 9  
 JERRY'S HOMES, INC. - 3301 NW 106th CIRCLE - URBANDALE, IOWA 50322  
 CIVIL ENGINEERING CONSULTANTS, INC. 2400 86TH STREET, #12, DES MOINES, IOWA 50322



- NOTES**
- ALL CONSTRUCTION (PUBLIC & PRIVATE) SHALL BE IN ACCORDANCE WITH THE WAUKEE STANDARD SPECIFICATIONS FOR PUBLIC IMPROVEMENTS IN EFFECT AT THE TIME OF CONSTRUCTION. CURRENT SPECIFICATIONS ARE AVAILABLE ONLINE AT: [WWW.WAUKEE.ORG/PDF/WAUKEE STD SPEC 2005A.PDF](http://WWW.WAUKEE.ORG/PDF/WAUKEE STD SPEC 2005A.PDF)
  - CONTRACTOR SHALL ARRANGE FOR TESTING AND INSPECTION AND NOTIFY THE FOLLOWING AT LEAST ONE WEEK PRIOR TO BEGINNING CONSTRUCTION:
    - CITY OF WAUKEE ENGINEERS OFFICE
    - JERRY'S HOMES, INC.
    - CIVIL ENGINEERING CONSULTANTS, INC.
  - THE LOCATION OF EXISTING FACILITIES AND APPURTENANCES SHOWN ON THIS PLAN ARE BASED ON AVAILABLE INFORMATION WITHOUT UNCOVERING AND MEASURING TO DETERMINE EXACT FACILITIES LOCATIONS. CIVIL ENGINEERING CONSULTANTS, INC. DOES NOT GUARANTEE THE LOCATION OF EXISTING FACILITIES AS SHOWN OR THAT ALL EXISTING FACILITIES ARE SHOWN. IT IS THE CONTRACTOR'S RESPONSIBILITY TO CONTACT ALL PUBLIC AND PRIVATE UTILITY PROVIDERS SERVING THIS AREA, AND IOWA ONE CALL, TO DETERMINE THE EXTENT AND PRECISE LOCATION OF EXISTING FACILITIES BEFORE CONSTRUCTION BEGINS.
  - THE CONTRACTOR SHALL PROTECT EXISTING ON-SITE FACILITIES FROM DAMAGE RESULTING FROM THE CONTRACTOR'S WORK. IF DAMAGE, BREAKAGE, INTERRUPTION OF SERVICE, ETC. OF EXISTING FACILITIES DOES OCCUR THE CONTRACTOR SHALL IMMEDIATELY CONTACT THE UTILITY'S OWNER.
  - PIPE MATERIALS: DUCTILE IRON IN ACCORDANCE WITH STANDARD SPECIFICATIONS OR ANNA CROO DR - 18 PVC INSTALL NO. 10 THIN STANDARD COPPER TRACER WIRE TO SURFACE AT FIRE HYDRANTS, VALVES, AND NEW DEAD ENDS. CONNECT NEW TRACER TO EXISTING.
  - THE CONTRACTOR SHALL VERIFY THE LOCATION AND PROTECT ALL UTILITIES AND STRUCTURES. DAMAGE TO UTILITIES AND STRUCTURES SHALL BE REPAIRED BY THE CONTRACTOR AT THE CONTRACTOR'S EXPENSE TO THE SATISFACTION OF THE OWNER.
  - THE CONTRACTOR SHALL PROTECT AND BACKFILL AROUND ALL UTILITIES AND STRUCTURES. BACKFILL SHALL BE IN 6" INCH LAYERS AND COMPACTED TO 95% STANDARD PROCTOR DENSITY, 4% TO 14% OPTIMUM MOISTURE CONTENT.
  - HYDRANTS, MANHOLE COVERS, AND VALVE BOXES SHALL BE SET TO CONFORM TO FINISHED PAVEMENT ELEVATIONS.
  - SERVICES TO BE 1" INCH COPPER, STOP BOXES TO BE MUELLER H-10300 OR EQUAL.
  - THE CONTRACTOR SHALL BE RESPONSIBLE FOR RECORDING THE AS-BUILT LOCATION OF ALL WATER SERVICES AND PROVIDING THIS INFORMATION TO THE ENGINEER.
  - HYDRANTS SHALL BE SET NOT MORE THAN 4 FEET FROM MAIN.
  - IF DISCREPANCY EXISTS BETWEEN THE DETAILED PLANS AND THE QUANTITIES, THE PLANS SHALL GOVERN.
  - AN APPROVED SADDLE SHALL BE USED FOR ALL WATER SERVICE TAPS.

**QUANTITIES**

690 LF	8" INCH WATER MAIN
2 EA	HYDRANT, TEE & 6" INCH VALVE
1 EA	HYDRANT, REDUCER & 8" INCH VALVE
2 EA	8" INCH VALVE
1 EA	BLOW-OFF HYDRANT
13 EA	SERVICES

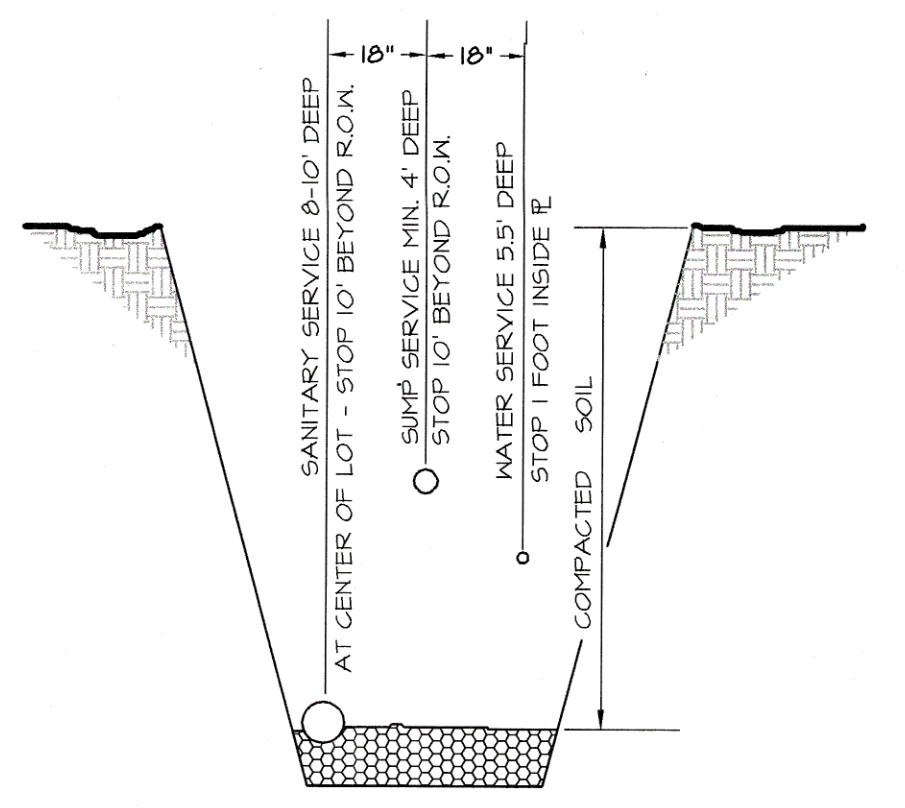
**LEGEND**

EXISTING/PROPOSED

- PLAT BOUNDARY
- - - SANITARY SEWER 4" SIZE
- - - WATER MAIN 4" SIZE
- - - STORM SEWER 4" SIZE
- MANHOLE
- STORM INTAKE
- ▲ FIRE HYDRANT
- ▼ VALVE

**IOWA ONE-CALL**  
800/292-8989  
CALL BEFORE YOU DIG

**NORTH**  
Scale: 1"=50'  
0 10 20 30 40 50 100'



SANITARY & SUMP SERVICES SHALL BE MARKED AT THE END OF PIPE WITH A 2X4 TO THE SURFACE & A STEEL FENCE POST. PLACE ONE 6 FT STEEL POST BURIED 9 FT. AT WATER CURB BOX. COLOR MARKING OF SERVICES SHALL BE RED FOR SANITARY, GREEN FOR SUMPS AND BLUE FOR WATER.

**SERVICE LOCATION DETAIL (TYP.)**  
(SEE EACH LOT ON SPECIFIC PLAN)

NO SCALE

