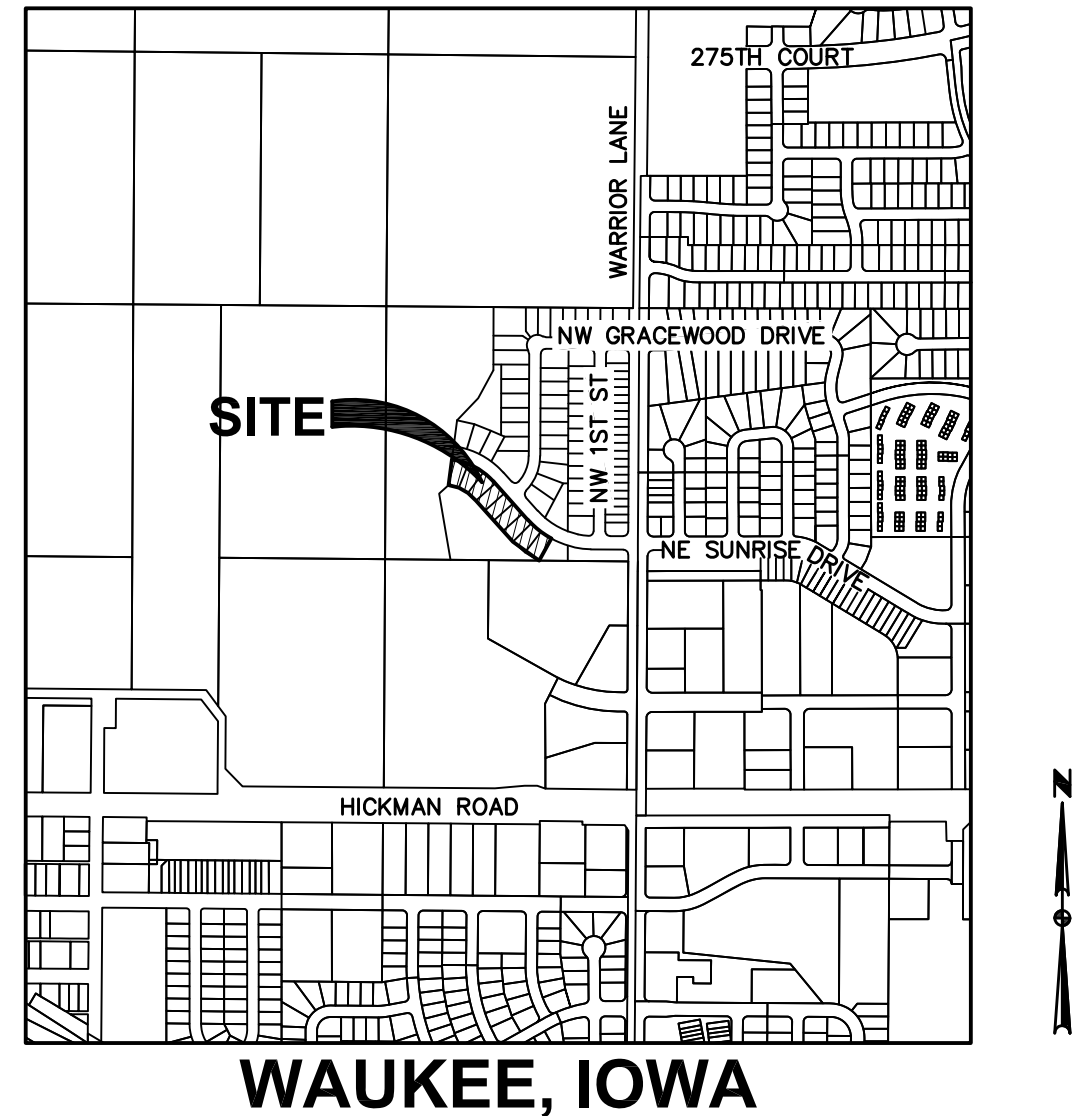


CONSTRUCTION PLANS FOR: INDI RUN PLAT 3 WAUKEE, IOWA

VICINITY MAP

NOT TO SCALE



WAUKEE, IOWA

INDEX OF SHEETS

NO.	DESCRIPTION
1	TITLE SHEET
2	DETAILS, QUANTITIES, REFERENCE NOTES AND GENERAL NOTES
3	STORM SEWER PLAN AND PROFILE
4	HYDRANT COVERAGE AND SERVICE LOCATION PLAN
5	GRADING PLAN

GENERAL LEGEND

PROPOSED	EXISTING
PROPERTY BOUNDARY	SANITARY MANHOLE
SECTION LINE	WATER VALVE BOX
CENTER LINE	FIRE HYDRANT
RIGHT OF WAY	WATER CURB STOP
BUILDING SETBACK	WELL
PERMANENT EASEMENT	STORM SEWER MANHOLE
TEMPORARY EASEMENT	STORM SEWER SINGLE INTAKE
TYPE SW-501 STORM INTAKE	STORM SEWER DOUBLE INTAKE
TYPE SW-502 STORM INTAKE	FLARED END SECTION
TYPE SW-503 STORM INTAKE	DECIDUOUS TREE
TYPE SW-505 STORM INTAKE	CONIFEROUS TREE
TYPE SW-506 STORM INTAKE	DECIDUOUS SHRUB
TYPE SW-512 STORM INTAKE	CONIFEROUS SHRUB
TYPE SW-513 STORM INTAKE	ELECTRIC POWER POLE
TYPE SW-401 STORM MANHOLE	GUY ANCHOR
TYPE SW-402 STORM MANHOLE	STREET LIGHT
FLARED END SECTION	POWER POLE W/ TRANSFORMER
TYPE SW-301 SANITARY MANHOLE	UTILITY POLE W/ LIGHT
STORM/SANITARY CLEANOUT	ELECTRIC BOX
WATER VALVE	ELECTRIC TRANSFORMER
FIRE HYDRANT ASSEMBLY	ELECTRIC MANHOLE OR VAULT
SIGN	TRAFFIC SIGN
DETECTABLE WARNING PANEL	TELEPHONE JUNCTION BOX
WATER CURB STOP	TELEPHONE MANHOLE/VAULT
STORM SEWER STRUCTURE NO.	TELEPHONE POLE
STORM SEWER PIPE NO.	GAS VALVE BOX
SANITARY SEWER STRUCTURE NO.	CABLE TV JUNCTION BOX
SANITARY SEWER PIPE NO.	CABLE TV MANHOLE/VAULT
SANITARY SERVICE	MAIL BOX
SANITARY SEWER	BENCHMARK
STORM SEWER	SOIL BORING
STORM SERVICE	UNDERGROUND TV CABLE
WATERMAIN WITH SIZE	GAS MAIN
WATER SERVICE	FIBER OPTIC
SAWCUT (FULL DEPTH)	UNDERGROUND TELEPHONE
SILT FENCE	OVERHEAD ELECTRIC
USE AS CONSTRUCTED	UNDERGROUND ELECTRIC
MINIMUM PROTECTION ELEVATION	FIELD TILE
	SANITARY SEWER WITH SIZE
	STORM SEWER WITH SIZE
	WATER MAIN WITH SIZE

AS-BUILT DRAWINGS

AS-BUILT PLANS ARE BASED ON SURVEYED INVERT ELEVATIONS AND INFORMATION SUPPLIED BY THE CONTRACTOR. CIVIL DESIGN ADVANTAGE TAKES NO RESPONSIBILITY FOR UNAUTHORIZED CHANGES TO THE PLANS WITHOUT CITY/OWNER KNOWLEDGE. FIELD VERIFICATION OF UTILITIES OR OTHER PLAN ELEMENTS IS ALWAYS RECOMMENDED.

OWNER/DEVELOPER

INDI RUN, LLC
17389 BERKSHIRE PARKWAY
CLIVE, IOWA 50325
PH: 515-975-7441
CONTACT: ERIC GRUBB

PROJECT MANAGER

SOLID GROUND, LLC
17389 BERKSHIRE PARKWAY
CLIVE, IOWA 50325
PH: 515-975-7441
CONTACT: ERIC GRUBB

ENGINEER/ SURVEYOR

CIVIL DESIGN ADVANTAGE
CONTACT: JEFF NESVIK
3405 SE CROSSROADS DRIVE, SUITE G
GRIMES, IOWA 50111
PH. (515) 369-4400
FX. (515) 369-4410

ZONING

R-2 - ONE AND TWO FAMILY RESIDENTIAL DISTRICT

BENCHMARKS

BURY BOLT ON HYDRANT @ SE CORNER OF
BADGER AND WARRIOR LANE.
ELEVATION=1014.03

BURY BOLT ON HYDRANT @ SE CORNER OF
DOUGLAS AND BADGER.
ELEVATION=999.60'

UTILITY NOTE

ANY UTILITIES SHOWN HAVE BEEN LOCATED FROM FIELD SURVEY AND RECORDS OBTAINED BY THIS SURVEYOR. THE SURVEYOR MAKES NO GUARANTEE THAT THE UTILITIES SHOWN COMPRISE ALL THE UTILITIES IN THE AREA, EITHER IN SERVICE OR ABANDONED. THE SURVEYOR FURTHER DOES NOT WARRANT THAT THE UTILITIES SHOWN ARE IN THE EXACT LOCATION SHOWN.

LEGAL DESCRIPTION

LOT 18 THROUGH LOT 26 INDI RUN PLAT 2 AN OFFICIAL PLAT IN AN FORMING PART OF WAUKEE, DALLAS COUNTY IOWA.

PROPERTY IS SUBJECT TO ANY AND ALL EASEMENTS OF RECORD.

GENERAL NOTES

- A PRE-CONSTRUCTION MEETING WITH THE CITY OF WAUKEE IS REQUIRED BEFORE CONSTRUCTION.
- ALL SIDEWALKS SHALL BE 5 FEET WIDE.
- ALL PROPOSED PEDESTRIAN CROSSINGS ARE TO BE INSTALLED AS PART OF PLAT IMPROVEMENTS.
- SIDEWALKS SHALL BE INSTALLED AS PART OF INDIVIDUAL LOT DEVELOPMENT.
- PRIVATE DETENTION BASINS SHALL BE MAINTAINED BY THE HOMEOWNERS ASSOCIATION.

SUBMITTAL DATES

FIRST SUBMITTAL:	01-27-2020
SECOND SUBMITTAL:	02-17-2020
THIRD SUBMITTAL:	03-05-2020
FOURTH SUBMITTAL:	03-19-2020
AS-BUILTS:	05-07-2020



CIVIL DESIGN ADVANTAGE

3405 SE CROSSROADS DR. SUITE G GRIMES, IOWA 50111
PH: (515) 369-4400 Fax: (515) 369-4410
PROJECT NO. 1908.401



1-800-292-8989
www.iowaonecall.com

ALL CONSTRUCTION MATERIALS, DUMPSTERS, DETACHED TRAILERS OR SIMILAR ITEMS ARE PROHIBITED ON PUBLIC STREETS OR WITHIN THE PUBLIC R.O.W.

THIS PROJECT HAS AN EXISTING #31612-31327 IOWA NPDES PERMIT #2. THE CONTRACTOR SHALL BE RESPONSIBLE FOR UPDATING THE SWPPP THROUGHOUT CONSTRUCTION AND MEETING LOCAL, STATE AND FEDERAL REQUIREMENTS.

THE MOST RECENT EDITION OF THE WAUKEE STANDARD SPECIFICATIONS FOR PUBLIC IMPROVEMENTS AND SUDAS STANDARD SPECIFICATIONS SHALL APPLY TO ALL WORK ON THIS PROJECT EXCEPT AS MODIFIED HEREIN.

	<p>I HEREBY CERTIFY THAT THIS ENGINEERING DOCUMENT WAS PREPARED BY ME OR UNDER MY DIRECT PERSONAL SUPERVISION AND THAT I AM A DULY LICENSED PROFESSIONAL ENGINEER UNDER THE LAWS OF THE STATE OF IOWA.</p> <p style="text-align: right;"><i>Jeffrey J. Nesvik</i> JEFFREY J. NESVIK, P.E. 05/20/2020 DATE</p> <p>LICENSE NUMBER 23810 MY LICENSE RENEWAL DATE IS DECEMBER 31, 2020 PAGES OR SHEETS COVERED BY THIS SEAL: SHEETS 1-5</p>
--	--

FILE: H:\2019\Projects\1908.401-INDI RUN PLAT 3\DWG\1908.401-INDI RUN PLAT 3.dwg PLOTTED BY: JEFF NESVIK DATE: 5/20/2020 10:10 AM

ESTIMATED PROJECT QUANTITIES

ITEM NO.	ITEM DESCRIPTION	UNIT	QUANTITY
1	SANITARY SEWER SERVICE STUB, PVC, 4 IN. DIA.	EA	3
2	STORM SEWER, TRENCHED, RCP, 15 IN. DIA.	LF	57
3	RELOCATE EXISTING STORM SEWER, TRENCHED, RCP, 15 IN. DIA.	LF	160
4	RELOCATE PIPE APRON, RCP, 15 IN. DIA. W/ FOOTING AND APRON GUARD	EA	1
5	STORM SEWER SERVICE STUB, PVC, 4 IN. DIA.	EA	3
6	WATER SERVICE STUB, BORED, COPPER, 1 IN. DIA.	EA	3
7	STORM MANHOLE, TYPE SW-401, 48 IN. DIA	EA	1
8	TRAFFIC CONTROL	LS	1
9	CONVENTIONAL SEEDING, SEEDING, FERTILIZING, AND MULCHING	LS	1
10	EROSION AND SEDIMENT CONTROL	LS	1
11	RIP RAP, CLASS "E"	TON	5
12	SIDEWALK, P.C.C., 6 IN.	SY	19
13	DETECTABLE WARNINGS	SF	16
14	CURB RAMP REMOVAL	SY	19

ESTIMATE REFERENCE INFORMATION

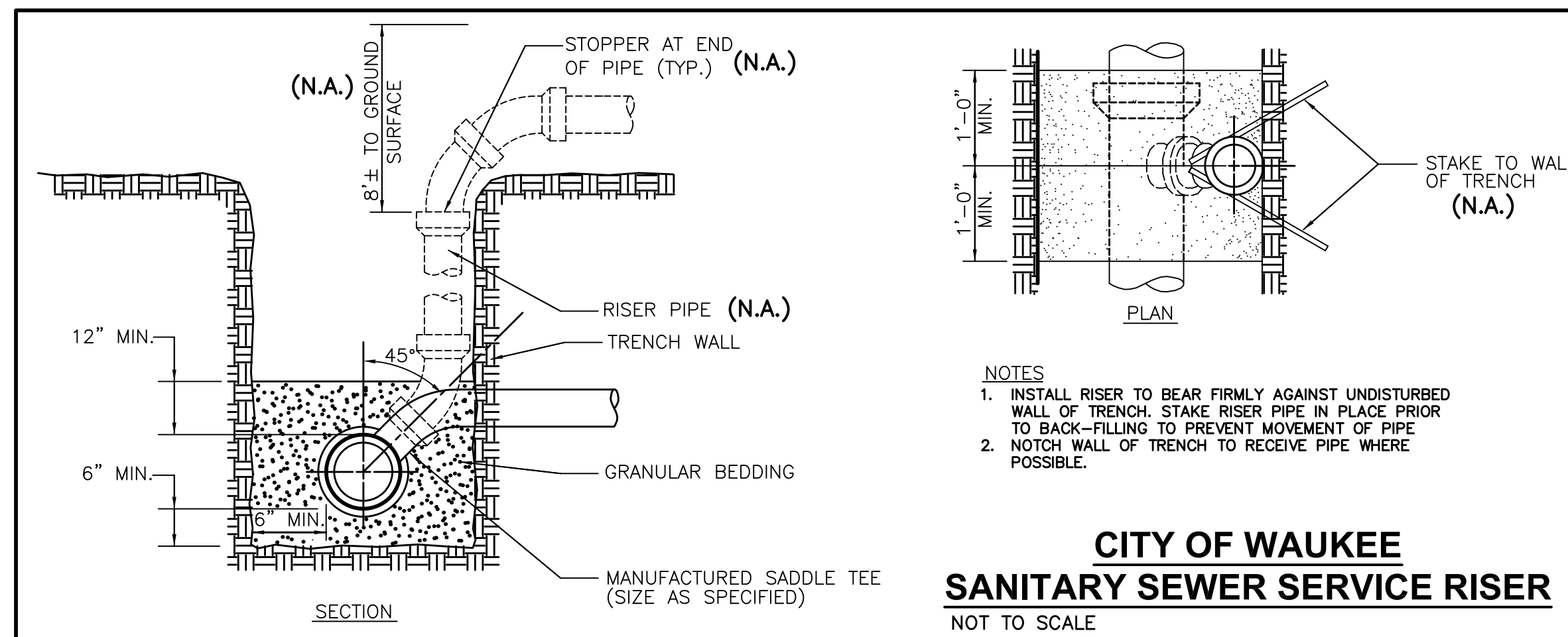
DATA LISTED BELOW IS FOR INFORMATIONAL PURPOSE ONLY AND SHALL NOT CONSTITUTE A BASIS FOR ANY EXTRA WORK ORDERS.

ITEM NO.	DESCRIPTION
1	THE MOST RECENT EDITION OF THE CITY OF WAUKEE STANDARD SPECIFICATIONS FOR PUBLIC IMPROVEMENTS AND THE 2020 EDITION OF SUDAS STANDARD SPECIFICATIONS SHALL APPLY TO ALL WORK PERFORMED ON THIS PROJECT EXCEPT AS MODIFIED HEREIN.
1, 5-6	REFER TO FIG. 4010.201 - SANITARY SEWER SERVICE STUB FOR CONSTRUCTION DETAILS.
2-3	REFER TO TYPICAL SERVICE INSTALLATION DETAILS ON SHEETS 2 AND 4 FOR INTERIM SERVICE LOCATION.
2-3	REFER TO FIG. 3010.101 - TRENCH BEDDING AND BACKFILL ZONES, FIG. 3010.102 - RIGID GRAVITY PIPE TRENCH BEDDING, AND FIG. 3010.103 - FLEXIBLE GRAVITY PIPE TRENCH BEDDING FOR BEDDING AND BACKFILL DETAILS. GRANULAR PIPE BEDDING SHALL BE CONSIDERED INCIDENTAL. TELEVIEW STORM SEWER PRIOR TO PAVING AND PROVIDE TELEVIEWING REPORT TO THE CITY IN HARD COPY AND ELECTRONIC FORMAT. TELEVIEWING SHALL BE CONSIDERED INCIDENTAL. CONNECTION TO EXISTING STORM SEWER SHALL BE CONSIDERED INCIDENTAL. WHERE THE STORM SEWER CROSSES OVER THE WATER MAIN LOCATE ONE FULL LENGTH OF REINFORCED CONCRETE PIPE (RCP) WITH FLEXIBLE O-RING GASKET JOINTS SO BOTH JOINTS ARE LOCATED AS FAR AS POSSIBLE FROM THE WATER MAIN.
3	REFER TO SHEET 3 FOR LOCATION OF EXISTING STORM SEWER TO BE REMOVED AND REUSED.
4	REMOVE AND REUSE EXISTING RCP APRON. REFER TO SHEET 3 FOR LOCATION. THE LAST THREE SECTIONS AND APRON SHALL BE CONNECTED WITH PIPE CONNECTORS. REFER TO FIG. 4030.221 - RCP APRON SECTION FOOTING FOR FOOTING CONSTRUCTION DETAILS. APRON GUARD REQUIRED ON ALL APRONS. RCP APRON FOOTING, PIPE APRON GUARD AND PIPE CONNECTORS TO BE CONSIDERED INCIDENTAL. INSTALL CLAY WATERSTOPS AT ALL RCP APRONS, MIN. 3' LONG.
6	INCLUDES WATER SERVICE, CORPORATION VALVE, AND STOP BOXES.
7	REFER TO FIG. 6010.401 - CIRCULAR STORM SEWER MANHOLE FOR CONSTRUCTION DETAILS. REFER TO FIG. 6010.602 - CASTINGS FOR STORM SEWER MANHOLES FOR CASTING DETAILS. TYPE E CASTINGS REQUIRED FOR ALL MANHOLES OUTSIDE OF PAVEMENT. TYPE F CASTINGS REQUIRED FOR ALL MANHOLES IN PAVEMENT. THE MAXIMUM HEIGHT OF ADJUSTING RINGS ALLOWED FOR MANHOLE CASTINGS IS 12 INCHES.
8	ALL TRAFFIC CONTROL SHALL BE IN ACCORDANCE WITH THE LATEST EDITION OF THE MANUAL ON TRAFFIC CONTROL DEVICES. THE CONTRACTOR SHALL INSTALL AND MAINTAIN ROAD BARRICADES AT END OF EXISTING PAVEMENTS UNTIL THE PROJECT IS ACCEPTED. PORTABLE MESSAGE BOARDS ARE REQUIRED TO BE DEPLOYED A MINIMUM OF 7 DAYS PRIOR TO ANY LANE/ROAD CLOSURES.
9	INCLUDES ALL MATERIALS, EQUIPMENT, AND LABOR NEEDED TO PERFORM SEEDING. SEED MIXTURE SHALL BE TYPE 1 (PERMANENT LAWN MIXTURE). REFER TO SECTION 9010, 2.02A TYPE 1 (PERMANENT LAWN MIXTURE) FOR SEED MIXTURE. CONTRACTOR SHALL SEED ALL DISTURBED AREAS.
10	REFER TO THE INDI RUN PLAN 1 CONSTRUCTION DRAWINGS FOR EROSION AND SEDIMENT CONTROLS. REFER TO SEPARATE STORM WATER POLLUTION PREVENTION PLAN (SWPPP) FOR SPECIFIC DETAILS.
11	REFER TO DETAIL ON SHEET 2 FOR CONSTRUCTION DETAILS. THICKNESS (T) EQUALS 2.1 FT. INSTALL ENGINEERING FABRIC UNDER ALL RIP RAP. ENGINEERING FABRIC SHALL BE CONSIDERED INCIDENTAL.
12-13	REFER TO FIG. 7030.204 - GENERAL SIDEWALK AND ACCESSIBLE RAMP DETAILS AND FIG. 7030.208 - CURB RAMPS WITHIN INTERSECTION RADIUS FOR CLASS B OR C SIDEWALK FOR CONSTRUCTION DETAILS. DETECTABLE WARNING PANELS TO BE ARMOR TILE, ADA SOLUTIONS OR APPROVED EQUAL, BRICK RED IN COLOR. ACCESSIBLE CURB RAMPS INCLUDING TURNING SPACES SHALL BE 6" THICK P.C.C.
14	REFER TO SHEET 4 FOR LOCATION. CONTRACTOR TO REMOVE 16 LF OF CURB DROP AND REBUILD 6" INTEGRAL P.C.C. CURB AND GUTTER.

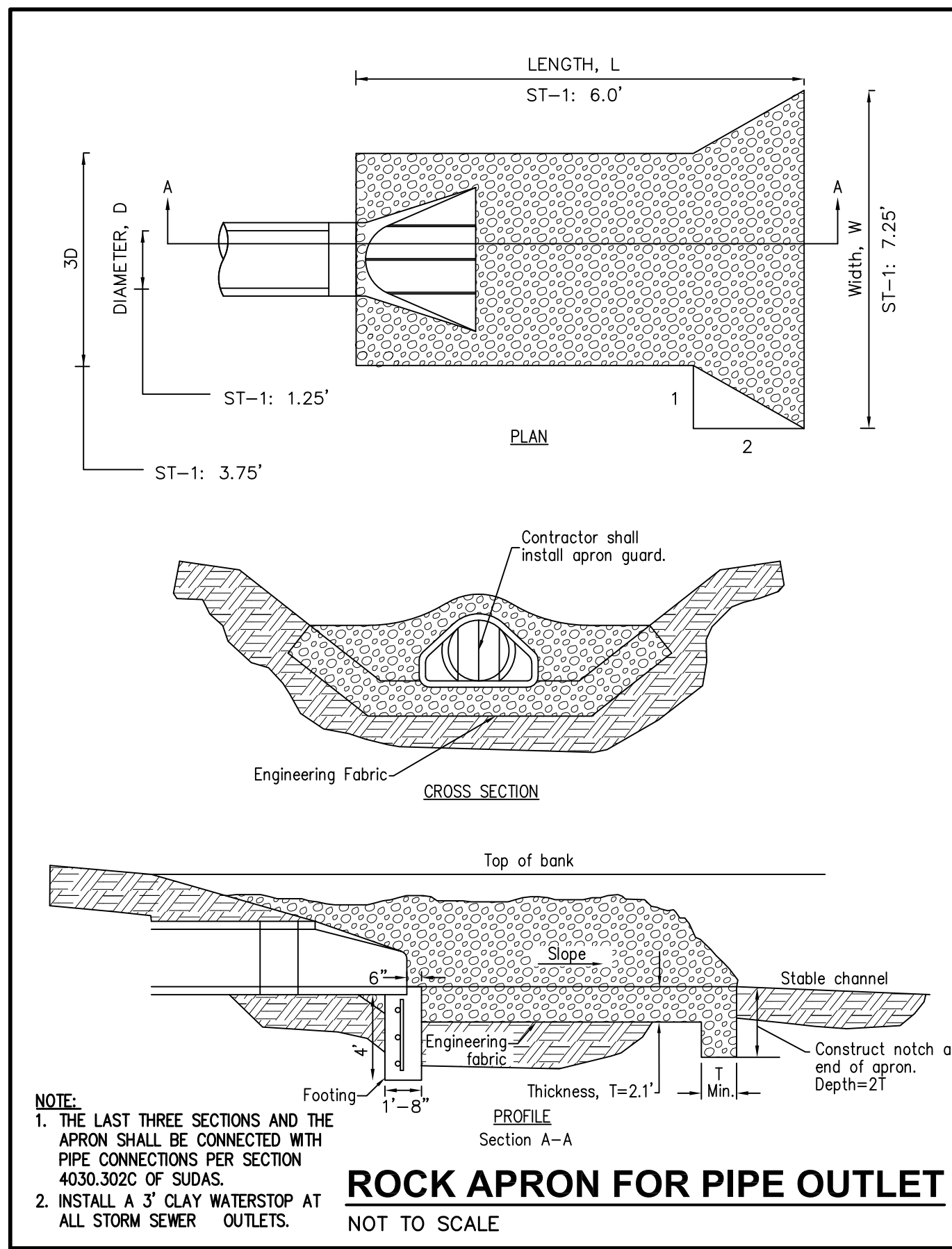
GENERAL NOTES

- ALL CONSTRUCTION SHALL CONFORM TO THE CITY OF WAUKEE STANDARD SPECIFICATIONS FOR PUBLIC IMPROVEMENTS AND TO THE 2020 EDITION OF SUDAS STANDARD SPECIFICATIONS. THE WAUKEE STANDARD SPECIFICATIONS SHALL GOVERN IF ANY DISCREPANCIES.
- WHERE PUBLIC UTILITY FIXTURES ARE SHOWN AS EXISTING ON THE PLANS OR ENCOUNTERED WITHIN THE CONSTRUCTION AREA, IT SHALL BE THE RESPONSIBILITY OF THE CONTRACTOR TO NOTIFY THE OWNERS OF THOSE UTILITIES PRIOR TO THE BEGINNING OF ANY CONSTRUCTION. THE CONTRACTOR SHALL AFFORD ACCESS TO THESE FACILITIES FOR NECESSARY MODIFICATION OF SERVICES. UNDERGROUND FACILITIES, STRUCTURES AND UTILITIES HAVE BEEN PLOTTED FROM AVAILABLE SURVEYS AND RECORDS, AND THEREFORE, THEIR LOCATIONS MUST BE CONSIDERED APPROXIMATE ONLY. IT IS POSSIBLE THERE MAY BE OTHERS. THE EXISTENCE OF WHICH IS PRESENTLY NOT KNOWN OR SHOWN. IT IS THE CONTRACTOR'S RESPONSIBILITY TO DETERMINE THEIR EXISTENCE AND EXACT LOCATIONS AND TO AVOID DAMAGE THERETO. NO CLAIMS FOR ADDITIONAL COMPENSATION WILL BE ALLOWED TO THE CONTRACTOR FOR ANY INTERFERENCE OR DELAY CAUSED BY SUCH WORK.
- THE CONTRACTOR IS REQUIRED TO UTILIZE THE UTILITY ONE-CALL SERVICE AT 800-292-8989 AT LEAST 48 HOURS PRIOR TO EXCAVATING ANYWHERE ON THE PROJECT.
- THE CONTRACTOR IS RESPONSIBLE FOR REPLACING ANY AREAS OF PAVEMENT OR SIDEWALK NOT TO BE REMOVED THAT IS DAMAGED DUE TO OPERATING HIS EQUIPMENT ON THE PAVEMENT OR SIDEWALK. PAVEMENT REPLACEMENT SHALL COMPLY WITH THE WAUKEE STANDARD SPECIFICATIONS FOR PUBLIC IMPROVEMENTS.
- THE GENERAL CONTRACTOR SHALL BE RESPONSIBLE FOR THE COORDINATION OF WORK BETWEEN ALL SUPPLIERS AND SUBCONTRACTORS INVOLVED IN THE PROJECT. INCLUDING STAGING OF CONSTRUCTION DETAILS.
- THE CONTRACTOR SHALL CONFINE HIS GRADING OPERATIONS TO WITHIN THE PROPOSED AND EXISTING RIGHT OF WAY, CONSTRUCTION LIMITS AND EASEMENTS SHOWN ON THE PLANS. CONSTRUCTION OPERATIONS SHALL PROTECT STORM SEWERS AND DRAINAGE WAYS FROM ALLOWING SLURRY FROM CONCRETE OPERATIONS TO DISCHARGE OFFSITE. ANY DAMAGE TO PROPERTIES OUTSIDE THE SITE BOUNDARY SHALL BE THE SOLE RESPONSIBILITY OF THE CONTRACTOR.
- PRIOR TO CONSTRUCTION, CONTRACTOR SHALL NOTIFY (48 HRS NOTICE) THE FOLLOWING:
 - CITY OF WAUKEE ENGINEERING DEPARTMENT
 - APPROPRIATE UTILITY COMPANIES
 - OWNER
 - CIVIL DESIGN ADVANTAGE
 *48 HOUR NOTICE SHALL BE GIVEN TO THE CITY OF WAUKEE ENGINEERING DEPARTMENT PRIOR TO WEEKEND AND HOLIDAY WORK.

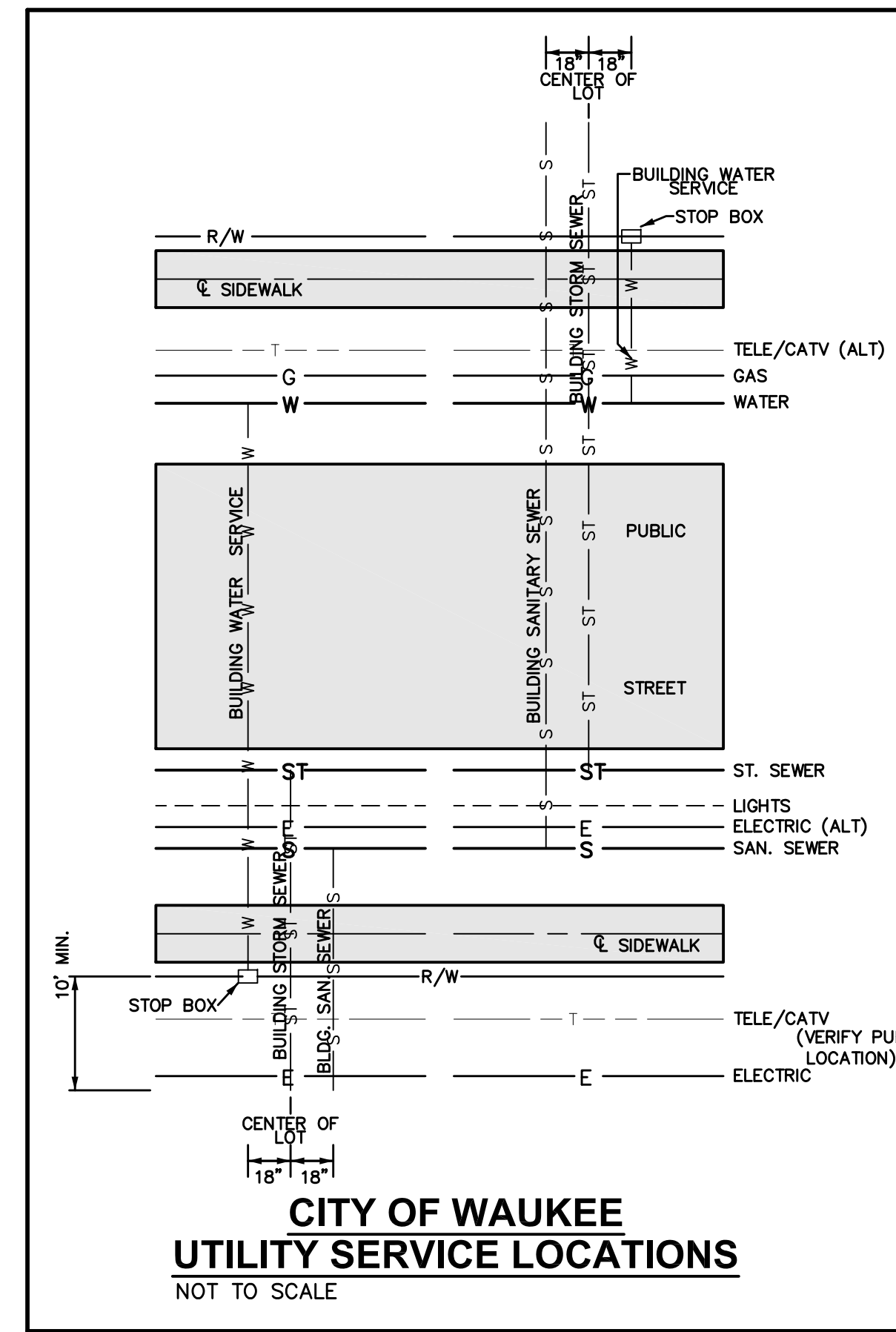
- PRIOR TO CONSTRUCTION, THE PROJECT MANAGER SHALL CONTACT THE WAUKEE ENGINEERING DEPARTMENT AND SCHEDULE A PRE-CONSTRUCTION MEETING AT LEAST ONE WEEK PRIOR TO THE ANTICIPATED START OF CONSTRUCTION.
- SPECIAL CARE SHALL BE TAKEN WHEN FORMING AT INTERSECTIONS SO THE PROFILES SHOWN ON THE PLANS AND THE ELEVATIONS SHOWN ON THE INTERSECTION DETAILS ARE OBTAINED. SHORT LENGTHS OF FORMS OR FLEXIBLE FORMS MAY BE NECESSARY AT THESE LOCATIONS.
- THE CONTRACTOR MAY BE REQUIRED AS DIRECTED BY THE ENGINEER OR THE CITY, TO PLACE TEMPORARY WARNING DEVICES AND SAFETY FENCE AT CERTAIN LOCATIONS WHERE REPLACEMENT FEATURES ARE NOT INSTALLED THE SAME DAY. THE IS BE INCIDENTAL TO THE BID ITEM TRAFFIC CONTROL. THE CONTRACTOR SHALL INSTALL AND MAINTAIN ROAD BARRICADES AT END OF EXISTING PAVEMENTS UNTIL THE PROJECT IS ACCEPTED.
- PLAN AND PROFILE SHEETS INCLUDED IN THE PROJECT ARE FOR THE PURPOSE OF ALIGNMENT, LOCATION AND SPECIFIC DIRECTIONS FOR WORK TO BE PERFORMED UNDER THIS CONTRACT. IRRELEVANT DATA ON THESE SHEETS IS NOT TO BE CONSIDERED A PART OF THIS CONTRACT.
- THE CONTRACTOR SHALL APPLY NECESSARY MOISTURE TO THE CONSTRUCTION AREA AND HAUL ROADS TO PREVENT THE SPREAD OF DUST.
- THE CONTRACTOR IS REQUIRED TO BE FAMILIAR WITH AND COMPLY WITH OSHA STANDARDS. NOTHING WITHIN THESE PLANS SHALL RELIEVE THE CONTRACTOR OF THIS REQUIREMENT.
- ALL MATERIAL TESTING SHALL BE CONSIDERED INCIDENTAL TO OTHER CONSTRUCTION.
- PRIOR TO ANY WORK AT THE SITE, CONTRACTOR SHALL EXAMINE ANY APPLICABLE DRAWINGS AVAILABLE FROM THE OWNER, ENGINEER, AND/OR ARCHITECT, AND CONSULT WITH OWNER'S PERSONNEL AND UTILITY COMPANY REPRESENTATIVES. NO COMPENSATION WILL BE ALLOWED FOR DAMAGE FROM FAILURE TO COMPLY WITH THIS REQUIREMENT.
- ALL TRAFFIC CONTROL SHALL BE IN ACCORDANCE WITH THE LATEST EDITION OF THE MANUAL ON UNIFORM TRAFFIC CONTROL DEVICES. (MUTCD)
- REMOVE DEBRIS SPILLED INTO R.O.W. AT THE END OF EACH WORK DAY AND BEFORE RAIN EVENTS.
- DO NOT STORE CONSTRUCTION MATERIALS AND EQUIPMENT IN THE R.O.W.
- ALL PROPERTY PINS SHALL BE PROTECTED FROM GRADING OR OTHER OPERATIONS. ANY PINS DISTURBED SHALL BE RESET AT THE CONTRACTOR'S EXPENSE.
- IN THE EVENT OF A DISCREPANCY BETWEEN DETAILED PLANS AND QUANTITIES, THE DETAILED PLANS SHALL GOVERN.
- ALL CONSTRUCTION STAKING TO BE COMPLETED UNDER THE DIRECTION OF A LICENSED ENGINEER OR LAND SURVEYOR. ALL CURB DROPS AND SIDEWALK/SHARED USE PATH SHALL ALSO BE STAKED UNDER THE DIRECTION OF A LICENSED ENGINEER OR LAND SURVEYOR.
- THE CONTRACTOR SHALL SUBMIT A LIST OF CONSTRUCTION MATERIALS TO THE CITY OF WAUKEE ENGINEERING DEPARTMENT PRIOR TO CONSTRUCTION.
- A GEOTECHNICAL ENGINEER SHALL BE ONSITE DURING CONSTRUCTION AND FOR PROOF ROLLING TO INSPECT SOILS. IT IS THE CONTRACTOR'S RESPONSIBILITY TO ENSURE THE GEOTECHNICAL ENGINEER IS PRESENT. A COPY OF ALL REPORTS AND FINDINGS REQUIRING ALTERATION FROM THE APPROVED PLAN SET IS TO BE PROVIDED TO THE WAUKEE ENGINEERING DEPARTMENT FOR REVIEW AND DISCUSSION PRIOR TO COMMENCING WITH PAVING WITHIN THE PROJECT.
- THE CONTRACTOR SHALL COORDINATE ALL EXISTING PUBLIC UTILITY CONNECTIONS WITH THE CITY OF WAUKEE ENGINEERING DEPARTMENT.
- ALL TESTING SHALL BE COMPLETED ACCORDING TO THE CITY OF WAUKEE STANDARD SPECIFICATIONS FOR PUBLIC IMPROVEMENTS AND THE WAUKEE ENGINEERING DEPARTMENT SHALL BE PRESENT TO WITNESS ALL TESTING.
- AS-BUILTS SHALL BE PROVIDED TO THE WAUKEE ENGINEERING DEPARTMENT INCLUDING ALL UTILITIES AND AS-BUILT GRADES FOR DRAINAGE SWALES, OVERFLOWS, ACCESSIBLE RAMPS AND DETENTION FACILITIES. THE CONTRACTOR SHALL PROVIDE INFORMATION TO THE DESIGN ENGINEER FOR INCLUSION ON THE RECORD AS-BUILT DRAWINGS.
- THE CONTRACTOR IS RESPONSIBLE FOR CLEANING AND TELEVIEWING ALL STORM SEWERS. A COPY OF THE VIDEOS AND A HARD COPY OF THE INSPECTION REPORT SHALL BE PROVIDED TO THE CITY OF WAUKEE ENGINEERING DEPARTMENT.
- VERIFY THAT ALL EXISTING AND PROPOSED MANHOLES WITHIN THE PLAT BOUNDARY HAVE A MINIMUM OF ONE 4-INCH ADJUSTING RING TO ALLOW FOR FUTURE ADJUSTMENT.
- ANY CHANGES TO THE PLAN SET ARE TO BE APPROVED IN WRITING BY THE CITY OF WAUKEE DEVELOPMENT SERVICES DEPARTMENT PRIOR TO EXECUTION OF THE CHANGES. THE CONTRACTOR IS RESPONSIBLE FOR ANY CHANGES MADE TO THE PLAN SET DURING CONSTRUCTION THAT HAVE NOT RECEIVED WRITTEN APPROVAL FROM THE CITY OF WAUKEE DEVELOPMENT SERVICES DEPARTMENT.
- CONSTRUCTION OPERATIONS SHALL PROTECT STORM SEWERS AND DRAINAGE WAYS FROM ALLOWING SLURRY FROM CONCRETE OPERATIONS TO DISCHARGE OFFSITE.



**CITY OF WAUKEE
SANITARY SEWER SERVICE RISER**
NOT TO SCALE



ROCK APRON FOR PIPE OUTLET
NOT TO SCALE



**CITY OF WAUKEE
UTILITY SERVICE LOCATIONS**
NOT TO SCALE

COMMENT: 5/26/2020 10:10 AM
 FILE: H:\2019\INDI RUN\INDI RUN PUBLIC\INDI RUN PLAT 1.dwg
 PLOTTED BY: GPT/NEK
 PLOT DATE: 5/26/2020 10:10 AM

INDI RUN PLAT 3

DETAILS, QUANTITIES, REFERENCE NOTES AND GENERAL NOTES

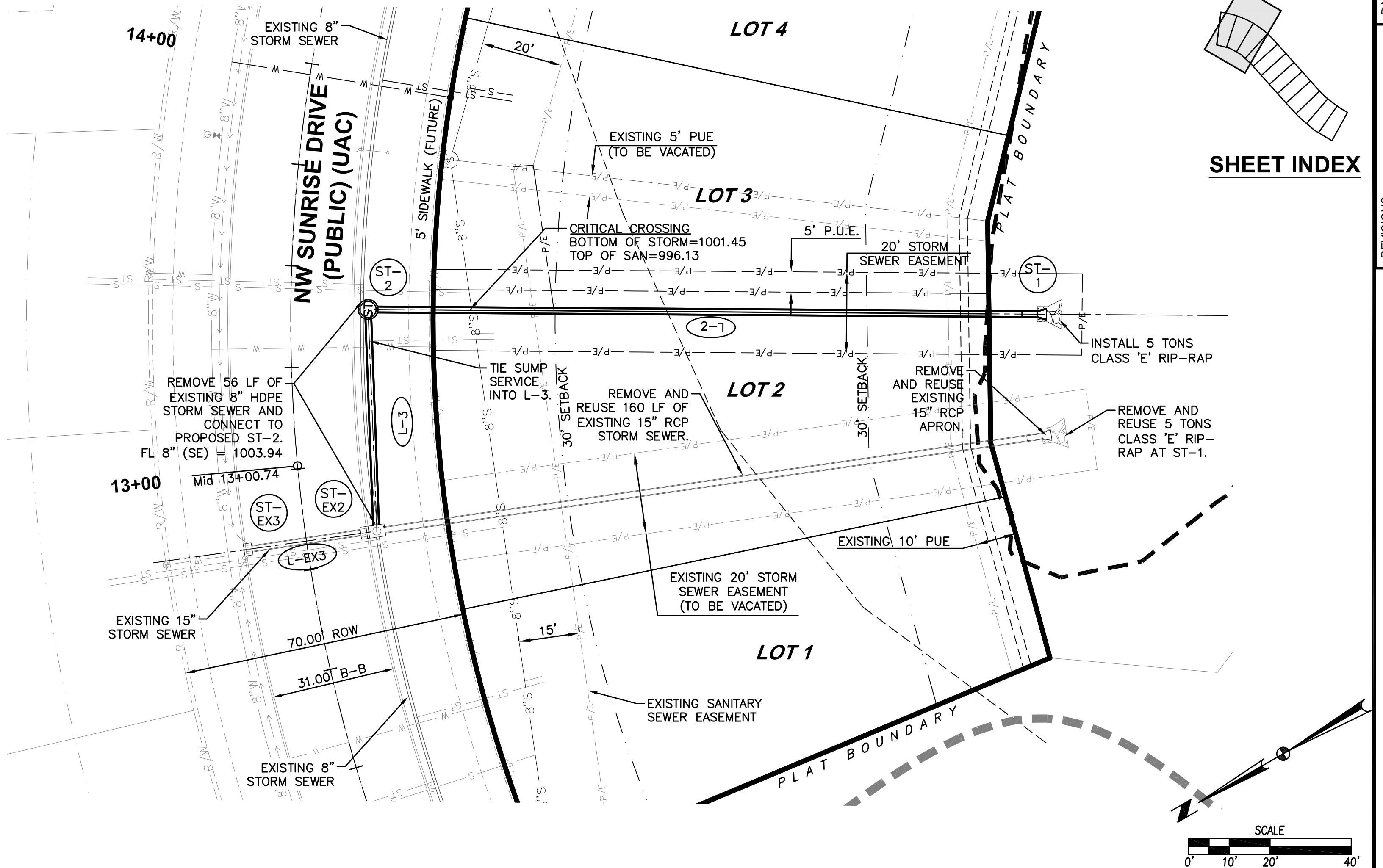
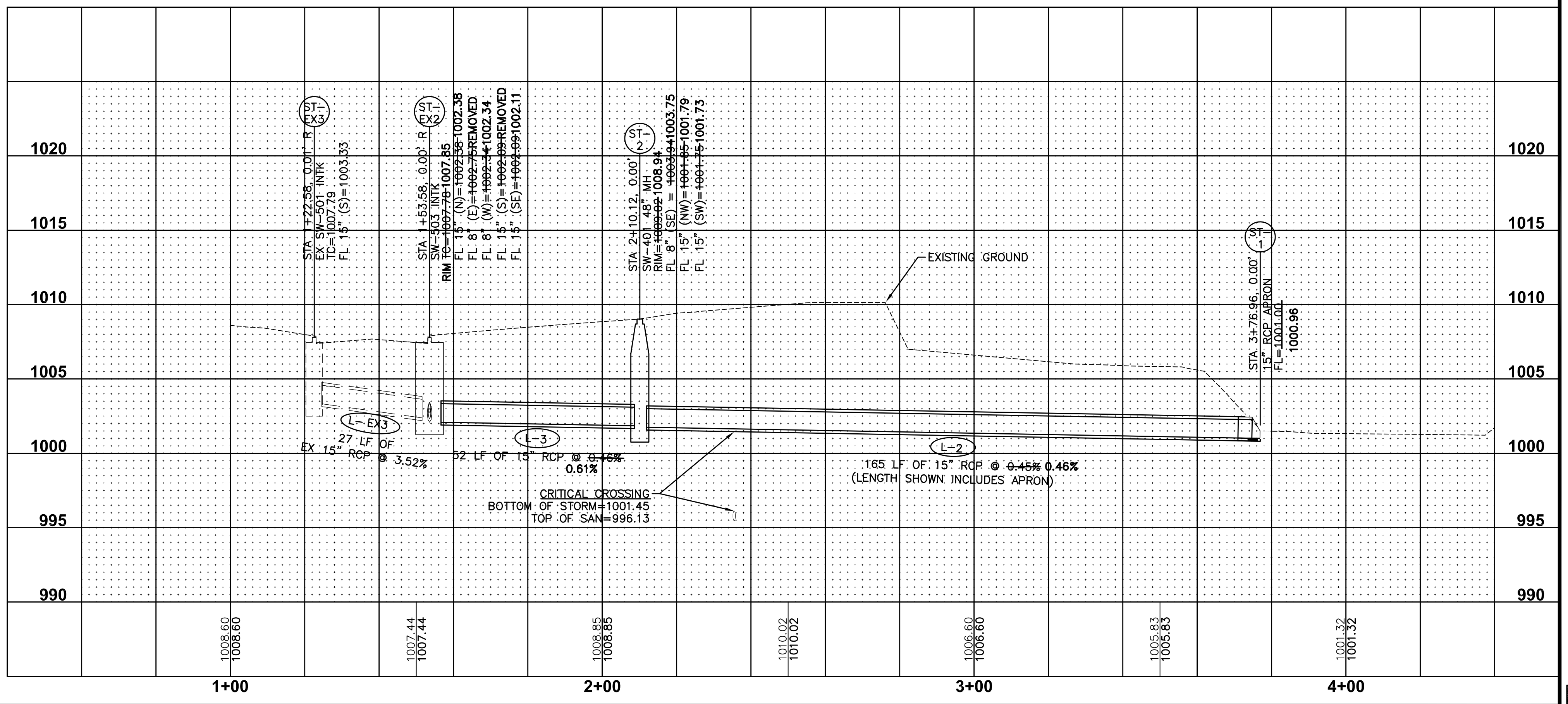
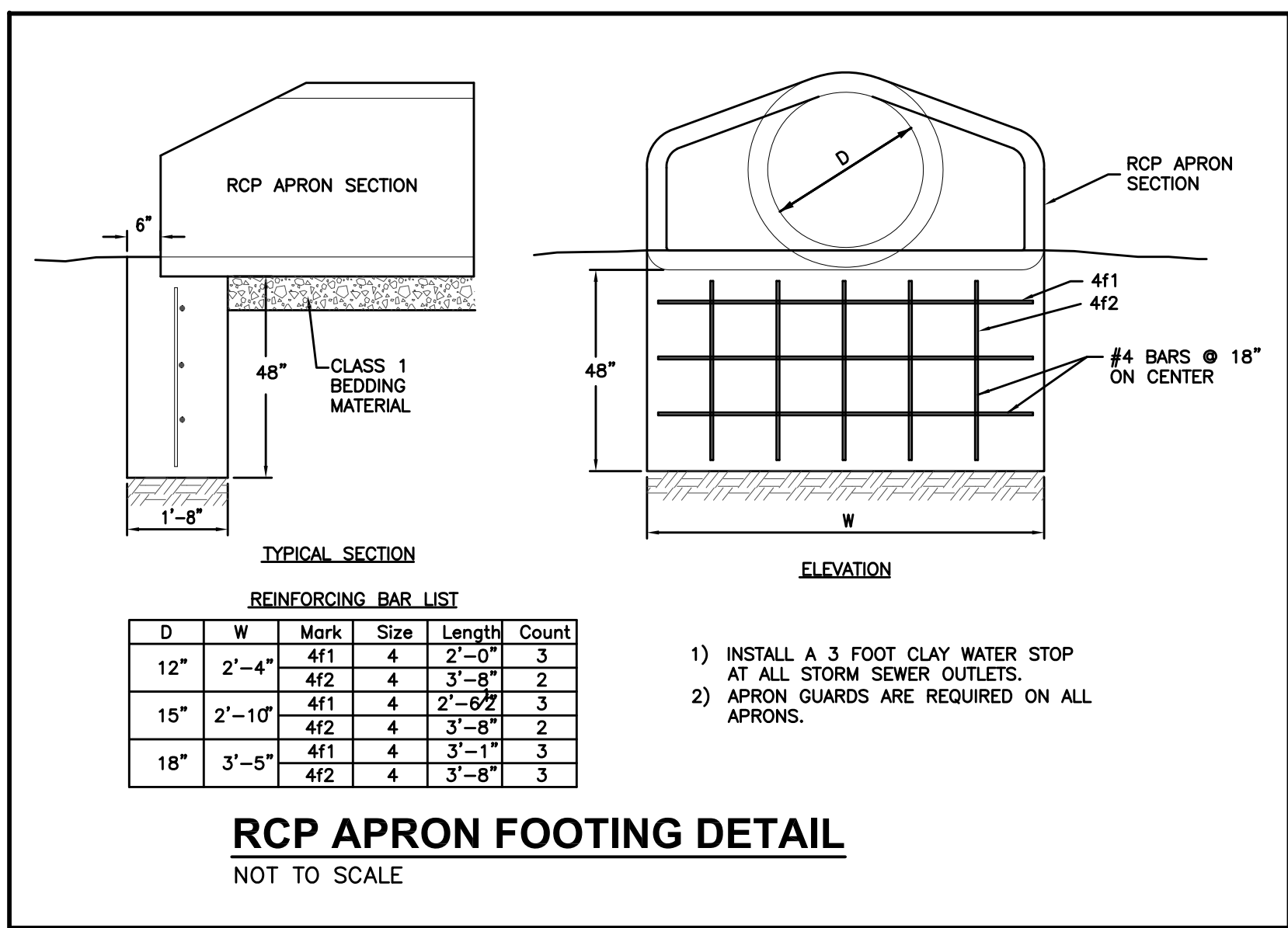
3405 S.E. CROSSROADS DRIVE, SUITE G
GRIMES, IOWA 50111
PHONE: (515) 369-4400 FAX: (515) 369-4410

ENGINEER: JUN PM: DM

CIVIL DESIGN ADVANTAGE WAUKEE, IOWA

2/5
1908.401

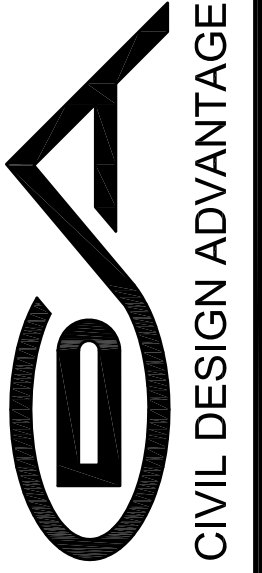
FILE: H:\2019\18840\INDI RUN\INDI RUN PLAT 3 - STORM SEWER.dwg
 COMMENT: INDIVIDUAL SHEET
 PLOTTED BY: GERT REISIK
 DATE: 5/20/2020 10:10 AM



SHEET INDEX

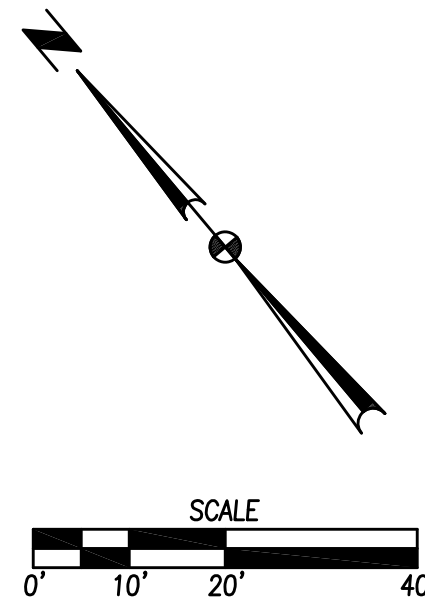
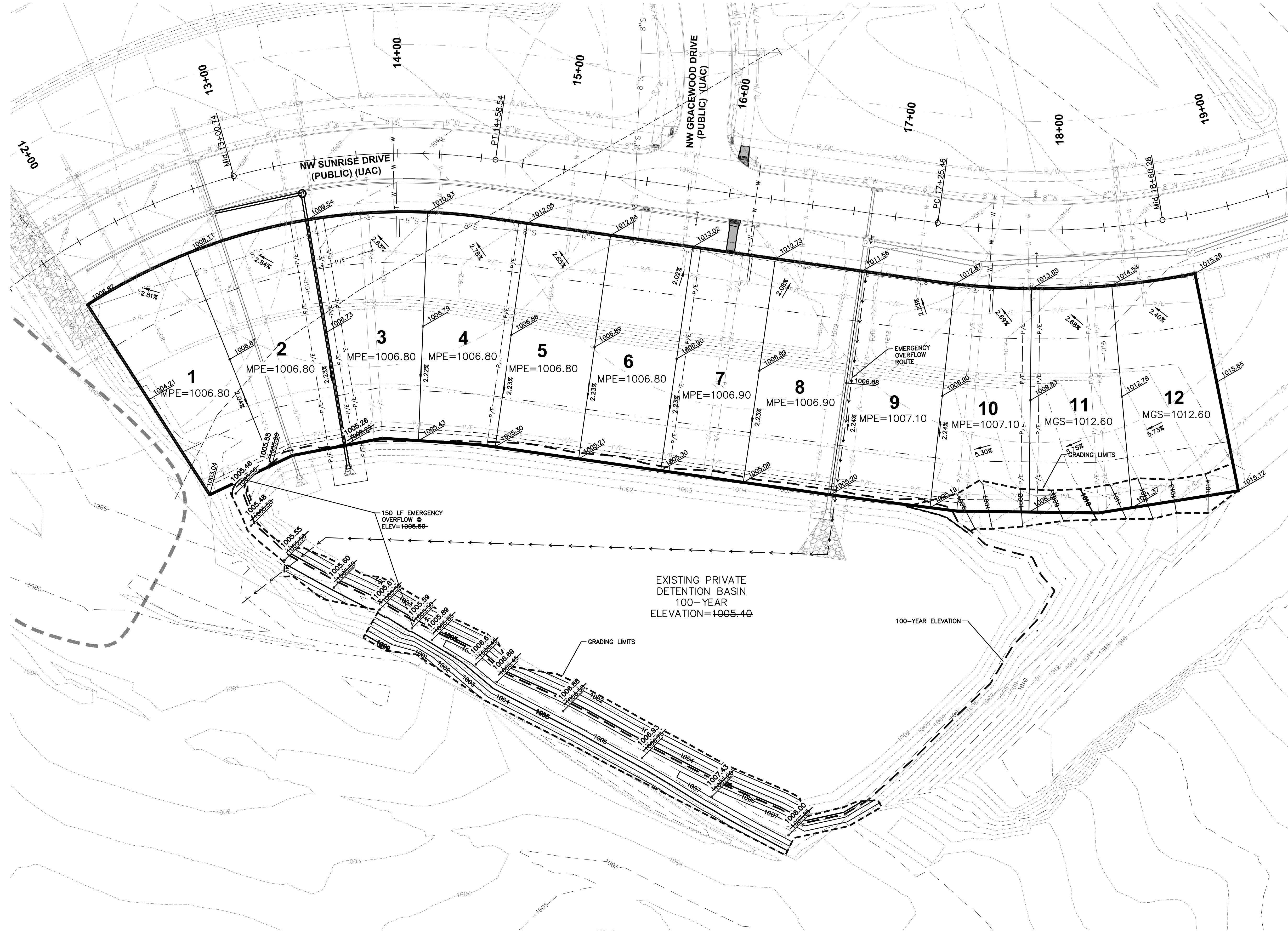
DATE	REVISIONS
05/07/20	AS-BUILT
03/19/20	4TH SUBMITTAL
03/05/20	3RD SUBMITTAL
02/17/20	2ND SUBMITTAL
01/27/20	1ST SUBMITTAL

3405 S.E. CROSSROADS DRIVE, SUITE G
 GRIMES, IOWA 50111
 PHONE: (515) 369-4400 FAX: (515) 369-4410

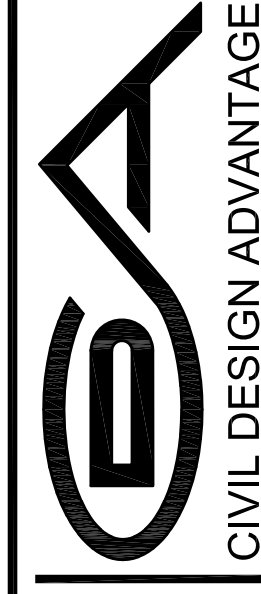


WAUKEE, IOWA

INDI RUN PLAT 3
STORM SEWER PLAN AND PROFILE



INDI RUN PLAT 3
GRADING PLAN



3405 S.E. CROSSROADS DRIVE, SUITE G
 GRIMES, IOWA 50111
 PHONE: (515) 369-4400 FAX: (515) 369-4410

REVISIONS	DATE
AS-BUILT	05/07/20
4TH SUBMITTAL	03/19/20
3RD SUBMITTAL	03/05/20
2ND SUBMITTAL	02/17/20
1ST SUBMITTAL	01/27/20

WAUKEE, IOWA

ENGINEER: JUN

PM: DM